

Adjustable Feet, Trapezoid Base 60 and 80 with anti-slip/vibration plate

Swiveling feet for levelling out uneven floors. Pivoting range of ball-and-socket joint: $\pm 20^\circ$.

No mounting holes.

Ball joint $\varnothing 15$.

Delivered as a kit, not assembled.

Material:

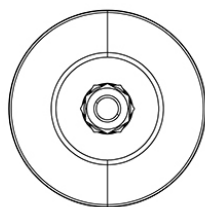
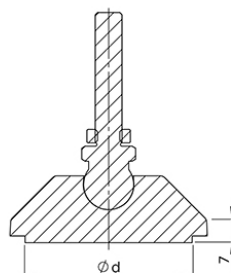
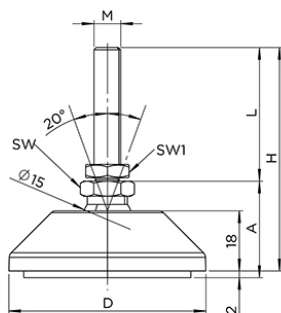
- Base: Die-cast zinc (black powder coat).
- Threaded rod: Steel, surface zinc plated.
- Anti-slip plate: Thermoplastic elastomer ≈ 70 shore A. Oil and water resistant (up to 60°C).

System: 40 - Slot 8; 30 - Slot 6; 20 - Slot 5

Type: Feet

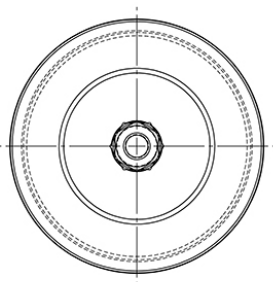
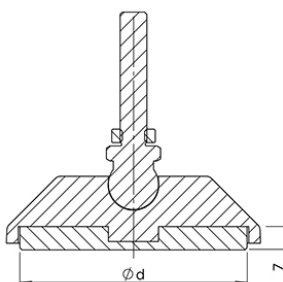
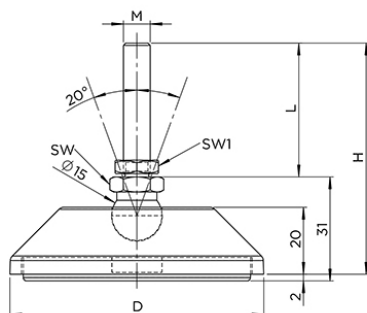


General Data



**Adjustable Feet, Trapezoid Base 60
with anti-slip/vibration plate**
Die-cast zinc with a black powder coat

Designations:
PZ7005
PZ7012
PZ7019
PZ7026
PZ7033
PZ7040
PZ7047



**Adjustable Feet, Trapezoid Base 80
with anti-slip/vibration plate**
Die-cast zinc with a black powder coat

Designations:
PZ7004
PZ7011
PZ7018
PZ7025
PZ7032
PZ7039
PZ7046

Designation	A	D	H	L	M
PZ7005	29.5	59	68.9	40	M8
PZ7012	29.5	59	109.1	80	M8
PZ7019	29.5	59	73.9	45	M10
PZ7026	29.5	59	73.9	45	M12
PZ7033	29.5	59	153.9	125	M12
PZ7040	29.5	59	94.9	66	M16

General Data

Designation	A	D	H	L	M
PZ7047	29.5	59	153.9	125	M16
PZ7004	29.5	76	71.1	40	M8
PZ7011	29.5	76	110.9	80	M8
PZ7018	29.5	76	73.9	45	M10
PZ7025	29.5	76	73.9	45	M12
PZ7032	29.5	76	155.9	125	M12
PZ7039	29.5	76	96.9	66	M16
PZ7046	29.5	76	155.9	125	M16

Designation	Base	d	Weight (g)	Max. Load (kg)	SW (mm)
PZ7005	Die-cast zinc with a black powder coat	50	149	350	14
PZ7012	Die-cast zinc with a black powder coat	50	162	350	14
PZ7019	Die-cast zinc with a black powder coat	50	158	470	14
PZ7026	Die-cast zinc with a black powder coat	50	168	770	14
PZ7033	Die-cast zinc with a black powder coat	50	225	770	14
PZ7040	Die-cast zinc with a black powder coat	50	225	1450	17
PZ7047	Die-cast zinc with a black powder coat	50	303	1450	17
PZ7004	Die-cast zinc with a black powder coat	68	261	350	14
PZ7011	Die-cast zinc with a black powder coat	68	274	350	14
PZ7018	Die-cast zinc with a black powder coat	68	270	470	14
PZ7025	Die-cast zinc with a black powder coat	68	280	770	14
PZ7032	Die-cast zinc with a black powder coat	68	337	770	14
PZ7039	Die-cast zinc with a black powder coat	68	337	1450	17
PZ7046	Die-cast zinc with a black powder coat	68	415	1450	17