

Adjustable Feet, Base 80 with anti-slip/vibration plate and fixing holes

Swiveling feet for levelling out uneven floors. Pivoting range of ball-and-socket joint: $\pm 20^\circ$.

Feet can be fixed to the floor.

Ball joint $\varnothing 15$.

Delivered as a kit, not assembled.

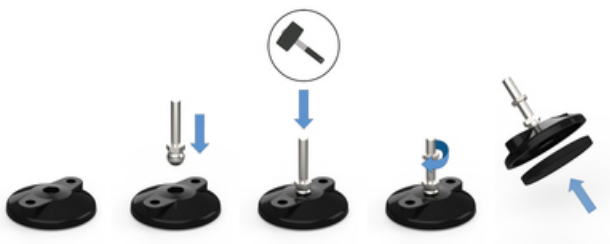
Material:

- Base: Plastic PA (black), glass ball reinforced or die-cast zinc, black powder coated.
- Threaded rod: Steel, surface zinc plated.
- Anti-slip plate: Thermoplastic elastomer ≈ 70 shore A. Oil and water resistant (up to 60°C).

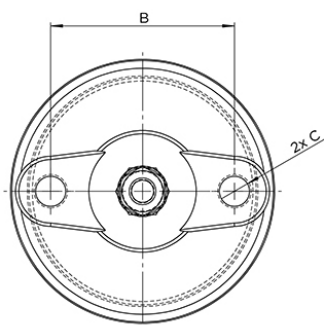
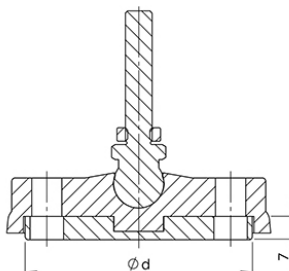
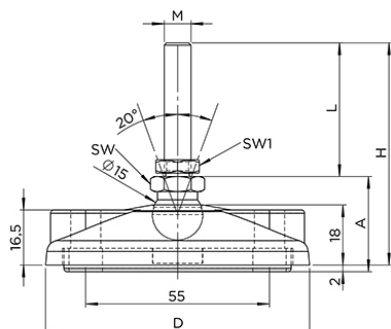
For stainless – steel please contact Rollco.

System: 40 - Slot 8; 30 - Slot 6; 20 - Slot 5

Type: Feet

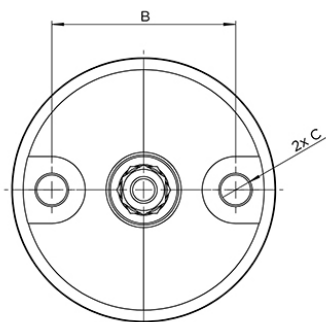
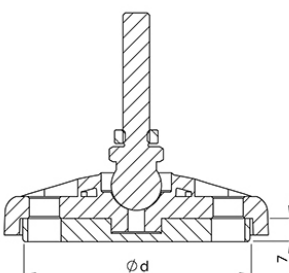
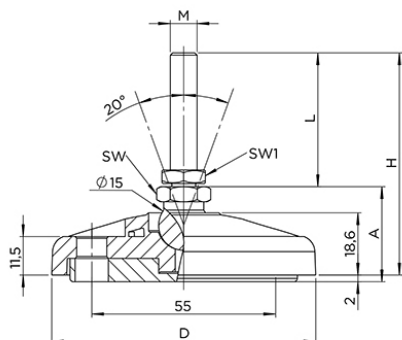


General Data



**Adjustable Feet, Base 80 with
anti-slip/vibration plate and fixing holes**
Plastic PA, Black

Designations:
PZ7002
PZ7009
PZ7016
PZ7023
PZ7030
PZ7037
PZ7044



**Adjustable Feet, Base 80 with
anti-slip/vibration plate and fixing holes**
Die-cast zinc with a black powder coat

Designations:
PZ7003
PZ7010
PZ7017
PZ7024
PZ7031
PZ7038
PZ7045

Designation	A	D	H	L	M
PZ7002	29.5	79	68.5	40	M8
PZ7009	29.5	79	108.7	80	M8
PZ7016	29.5	79	73.7	45	M10
PZ7023	29.5	79	73.7	45	M12
PZ7030	29.5	79	153.7	125	M12
PZ7037	29.5	79	94.7	66	M16

General Data

Designation	A	D	H	L	M
PZ7044	29.5	79	153.7	125	M16
PZ7003	29.5	79	68.4	40	M8
PZ7010	29.5	79	108.7	80	M8
PZ7017	29.5	79	73.4	45	M10
PZ7024	29.5	79	73.4	45	M12
PZ7031	29.5	79	153.4	125	M12
PZ7038	29.5	79	94.7	66	M16
PZ7045	29.5	79	153.4	125	M16

Designation	Base	d	Weight (g)	Max. Load (kg)	SW (mm)
PZ7002	Plastic PA, Black	68	108	350	14
PZ7009	Plastic PA, Black	68	121	350	14
PZ7016	Plastic PA, Black	68	117	470	14
PZ7023	Plastic PA, Black	68	127	770	14
PZ7030	Plastic PA, Black	68	186	770	14
PZ7037	Plastic PA, Black	68	184	900	17
PZ7044	Plastic PA, Black	68	262	900	17
PZ7003	Die-cast zinc with a black powder coat	68	322	350	14
PZ7010	Die-cast zinc with a black powder coat	68	335	350	14
PZ7017	Die-cast zinc with a black powder coat	68	331	470	14
PZ7024	Die-cast zinc with a black powder coat	68	341	770	14
PZ7031	Die-cast zinc with a black powder coat	68	398	770	14
PZ7038	Die-cast zinc with a black powder coat	68	398	1450	17
PZ7045	Die-cast zinc with a black powder coat	68	476	1450	17