

## Table of contents

- Angle Plate, steel
- Corner Brackets Zn 40
- Tie Plate, steel
- Standard Fastening Set
- Standard Fastener Set 8K
- Universal Fastener
- Universal Butt Fastening Set 8
- Central Fastener 40 S / SV
- Central Fastener 40 SL / SVL
- Central Fastener 40 SVL
- Automatic Fastening Set 40
- Automatic Butt Connector
- T-Nuts, ball-type, push-in
- T-Nuts, ball-type, push-in, flat
- T-Nuts, ball-type, slide-in
- Square T-Nuts
- Fixing Blocks
- Fixing Angles
- Fixing Angles 40
- Fixing Angles 70 x 70
- Angles 120 x 120
- Clamp Angles
- Mounting Angle
- Corner Fasteners
- Round Corners
- Gusset Plates AL
- Attachment Plates
- Attachment Plates, angled
- Central Fastener 40 EL / EQ
- Central Fastener G 30 SS / G 45 SS
- Central Fastener 40 90°
- Central Fastener 40 120°
- Central Fastener 40 135°
- Central Fastener 40 G
- Central Fastener 40 GC / GCV
- Dummy Plug
- Pneumatic Fastener 40
- Attachment Screws
- Potential Equalizers
- Profile Cap for SV drillings

## Table of contents

- T-Nuts, push-in
- T-Nuts, slide-in
- T-Nuts, steel / plastic
- T-Nut Profile, slide-in
- T-Nut Profile, push-in
- T-Nut Profile, aluminium, slide-in
- Double T-Nuts 40/20
- Special T-Nut
- Panel Bracket
- Earthing Strap
- Angle 40 x 60
- Angle 60 x 70
- Bolt G-type

## Angle Plate, steel

Universally applicable attachment bracket. Links two aluminium profiles at a right angle.

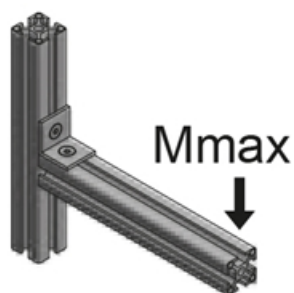
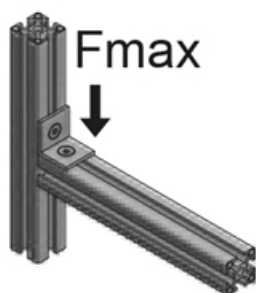
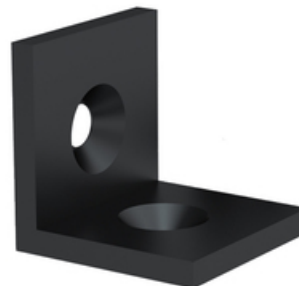
Mounting material:

M8 × 14 countersunk screw (DIN7991), M8 slot 8 slot nut

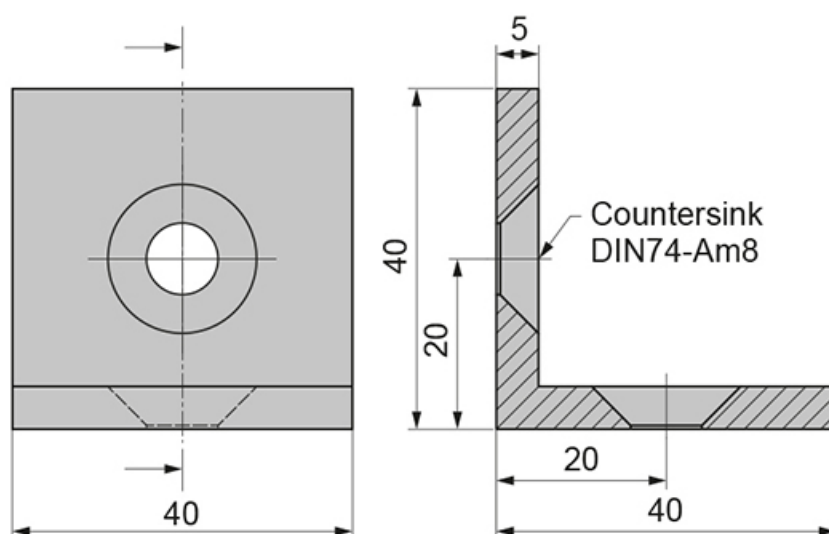
**Material:** Steel, black

**System:** 40 - Slot 8

**Type:** Angles Brackets and Corners; Fasteners



## General Data



**PZ1125**

Designation	Description	System	Fmax (N)	Mmax (Nm)
<b>PZ1125</b>	Bracket 40 × 40	40 - Slot 8	1500	50

## Corner Brackets Zn 40

### Application:

For right-angled fixing of profiles without the need of machining the profiles.

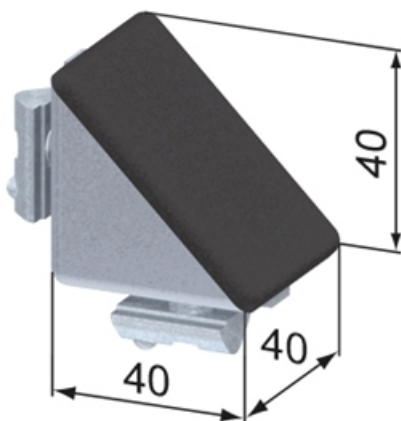
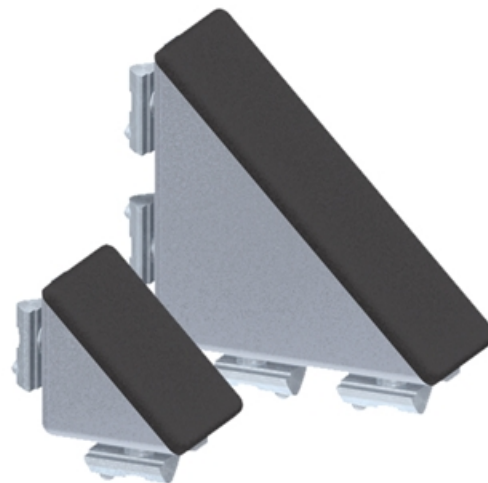
### The set contains:

- Corner Bracket Zn
- Profile Cap Corner Zn
- Button head screws M8x16
- T-Nuts M8/ball-type, push-in
- Security washers D=8mm

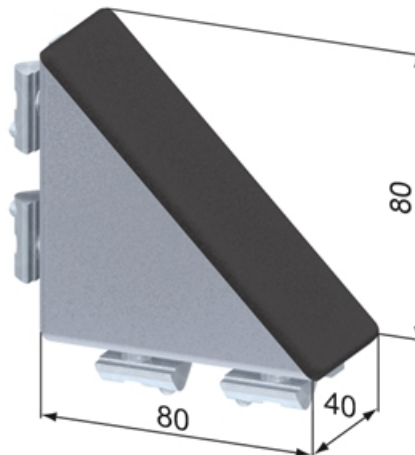
**Material:** GDZn (zinc diecasting), natural

**System:** 40 - Slot 8

**Type:** Angles Brackets and Corners; Fasteners



SZ0970N



SZ0972N



## Corner Brackets Zn 40



## General Data

Designation	Description	System	Weight (g)	Remark
<b>SZ0970N</b>	Set Corner Bracket Zn 40 x 40, complete	40 - Slot 8	135	Complete set
<b>SZ0972N</b>	Set Corner Bracket Zn 40 x 80, complete	40 - Slot 8	388	Complete set

## Tie Plate, steel

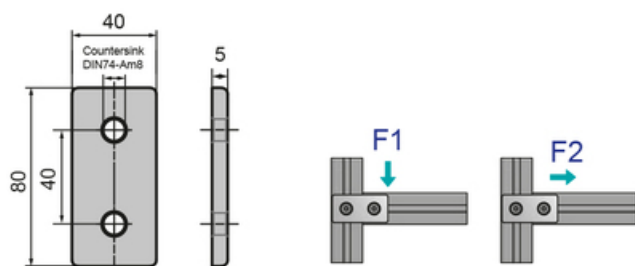
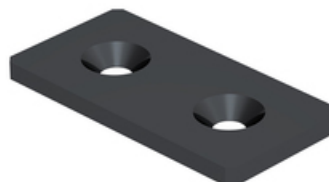
### Application:

Universally applicable attachment elements for interconnecting profiles.

**Material:** Steel, black

**System:** 40 - Slot 8

**Type:** Angles Brackets and Corners; Fasteners



PZ1120



## General Data

Designation	Description	System	F1 (N)	F2 (N)	Weight (g)
PZ1120	Tie Plate 40 x 80, steel	40 - Slot 8	850	900	90

## Standard Fastening Set

### Application:

An inexpensive and simple connection for two profiles. Teeth crack the anodized coating and create a reliable and conductive link. A fixed joint similar to SV1900V this connector comes instead as a set including screw and anti-rotation element.

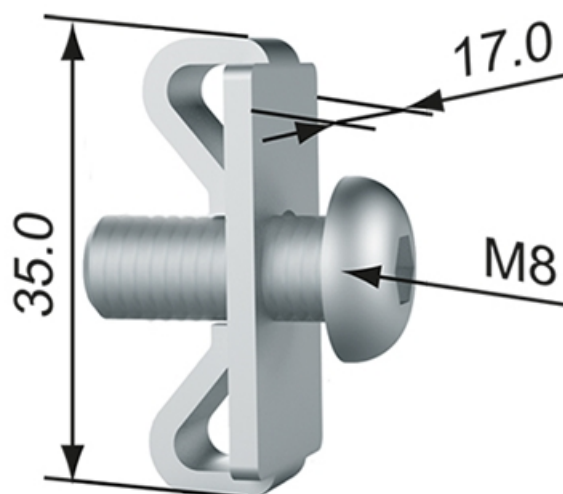
### Supply:

1 x ISO 7380 M8x20 fillister head screw

**Material:** Steel, galvanised

**System:** 40 - Slot 8

**Type:** Fasteners



## General Data

Designation	System	Torque (Nm)	Weight (g)
PV1022	40 - Slot 8	25	14

## Standard Fastener Set 8K

For mounting surface elements in the profile slot. An added benefit of the connector set is that you can do without extra notches in the surfaces. The connector supports a maximum tightening torque of 25.0 Nm.

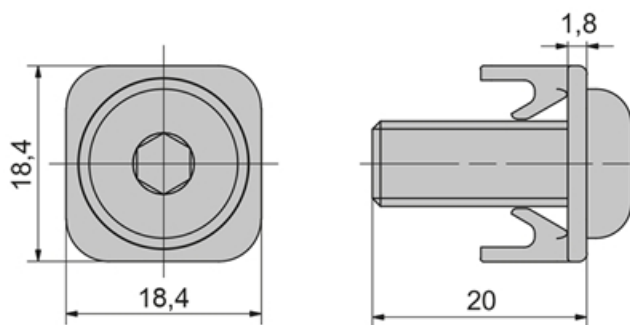
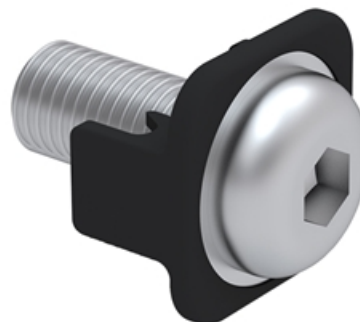
To provide access to the screw head, we recommend drilling a hole ( $D = 7.0 \text{ mm}$ ) every 20.0 mm.

Set includes a galvanised M8x20 fillister head screw.

**Material:** Spacer, black POM. Fillister head screw, galvanised steel.

**System:** 40 - Slot 8

**Type:** Fasteners



## General Data

Designation	Description	System	Tightening Torque (Nm)
PV1021	Standard Fastener Set 8K	40 - Slot 8	25

## Universal Fastener

Application:

Links two aluminium profiles.

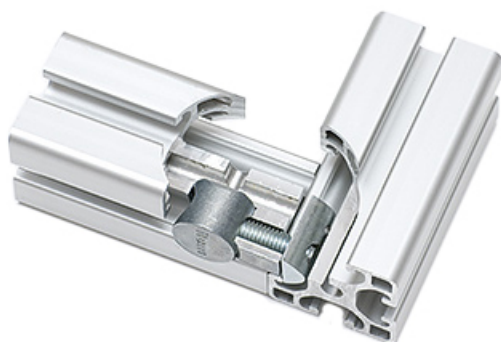
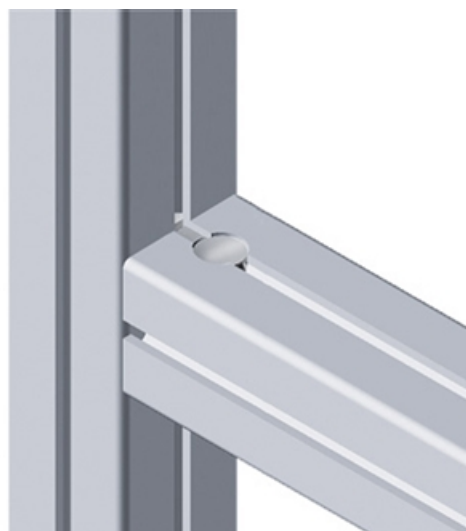
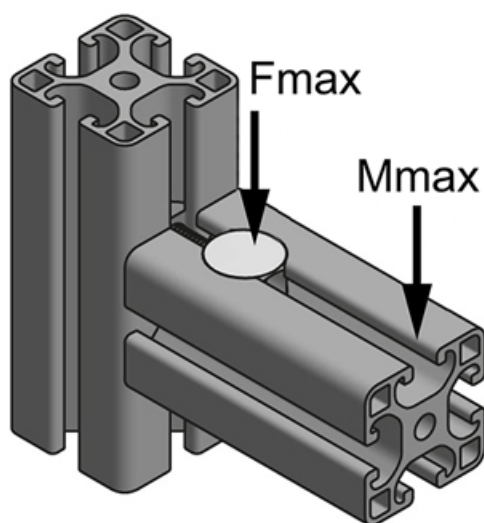
Supply:

Set of universal fastener with guide lug and 8 mm hole. M8 slot nut and cheese head screw included.

**Material:** Die-cast zinc, galvanised

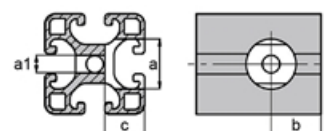
**System:** 40 - Slot 8

**Type:** Fasteners

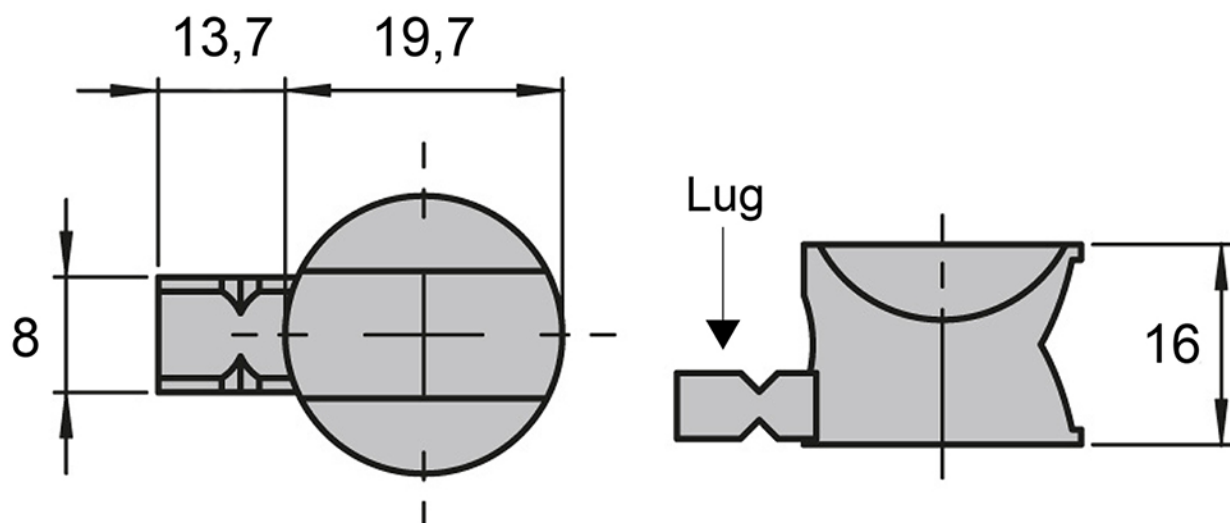


**Machining:**

Drill hole (a)	Ø 20 mm
Drill hole (a1)	Ø 7 mm
Distance (b)	20 mm
Depth (c)	16 mm



## General Data



Designation	Description	System	Fmax (N)	Mmax (Nm)
PV1015	Universal Fastener Set 8 with lug	40 - Slot 8	1750	80

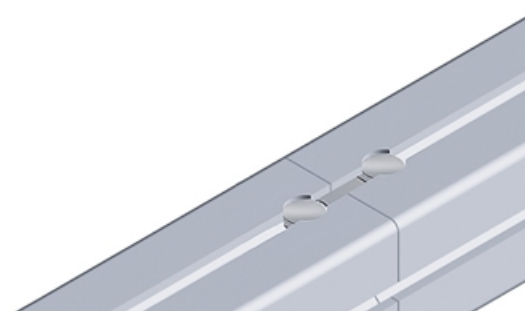
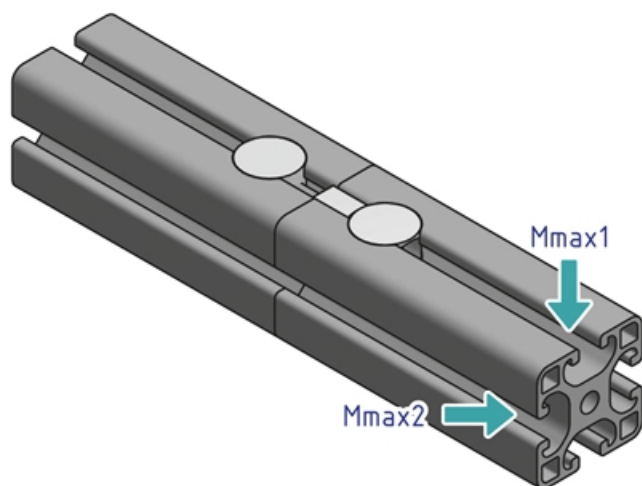
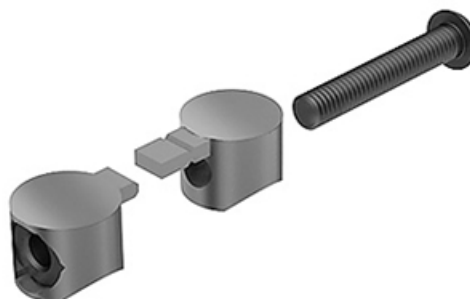
## Universal Butt Fastening Set 8

Links the face ends of two aluminium profile from the same series. Supplied with mounting kit. Set consists of 2 universal connectors, 1 M8 × 45 fillister head screw (ISO7380), 1 M8 nut (DIN934).

**Material:** Galvanised die-cast zinc

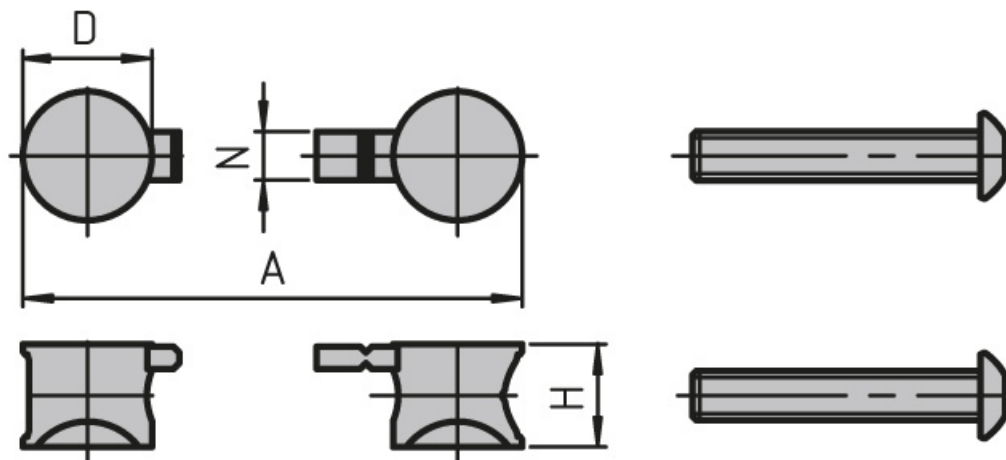
**System:** 40 - Slot 8

**Type:** Fasteners





## General Data



Designation	System	A	D	H	Mmax1 (Nm)
PV1030	40 - Slot 8	60	19.7	16	150

Designation	Mmax2 (Nm)
PV1030	150

## Central Fastener 40 S / SV

### Application:

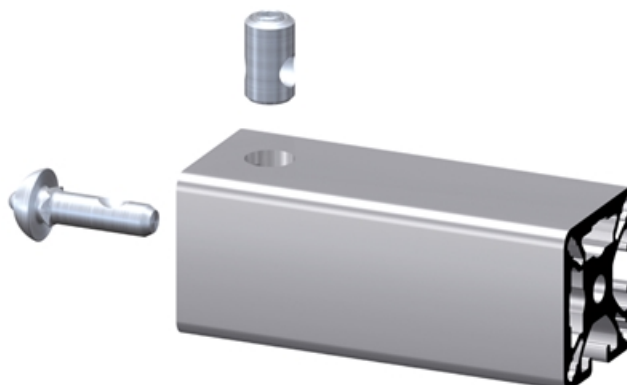
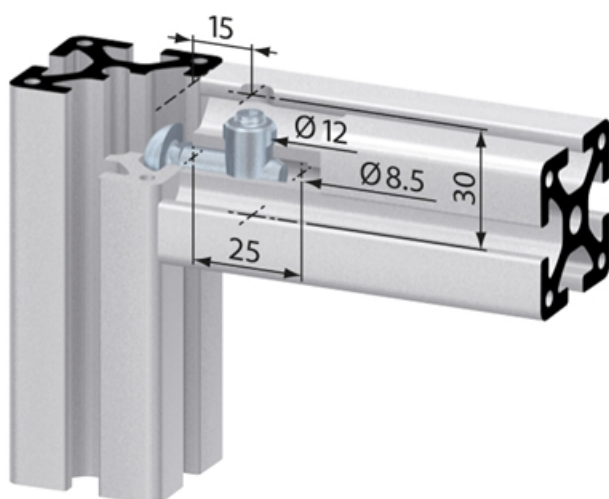
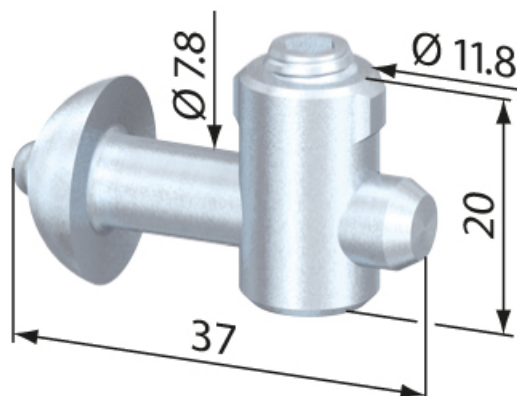
All-purpose universal fastener. The slide-in anchor is held in position in the profile groove by a spring-loaded ball in the opposing profile t-slot. The SV fasteners have an anti-twist feature. The SV ON fastener is to be used with closed profiles.

### Assembly:

Bore hole for the barrel housing:  $\varnothing 12$  mm, 15 mm from profile end, 30 mm deep. Bore for center hole on end of profile for anchor:  $\varnothing 8.5$  mm, 25 mm deep.

**System:** 40 - Slot 8

**Type:** Fasteners



## General Data

Designation	Description	System	Material	Weight (g)
<b>SV1001V</b>	Central fastener 40 S	40 - Slot 8	Steel, zinc-plated	28
<b>SV1211V</b>	Central fastener 40 SV	40 - Slot 8	Steel, zinc-plated	28
<b>SV1212V</b>	Central fastener 40 SV ON	40 - Slot 8	Steel, zinc-plated	27
<b>SV1350V</b>	Central fastener 40 SV VA	40 - Slot 8	Stainless steel	30

## Central Fastener 40 SL / SVL

### Application:

Special applications. The slide-in anchor, with an anti-twist feature, can be fixed in the profile t-slot at any point. The anchor is held in position by a spring-loaded ball in the opposing profile t-slot. The SVL fastener has an anti-twist feature. Both fasteners can be used for parallel and transverse connections.

### Assembly:

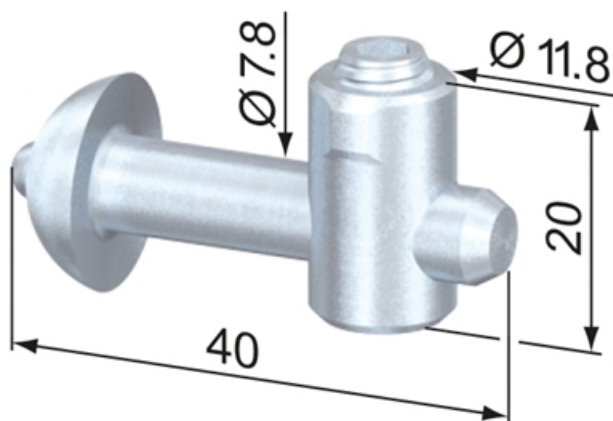
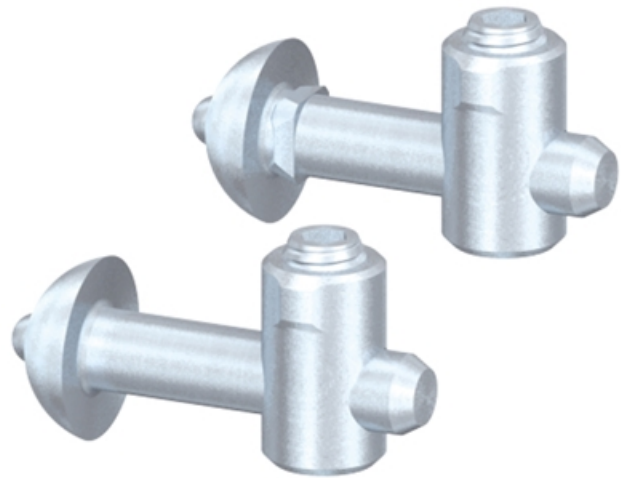
Bore hole for the barrel housing:  $\varnothing 12$  mm, 20 mm from profile end, 30 mm deep.

Bore for anchor in the profile:  $\varnothing 8.5$  mm, 20 mm from profile end, 25 mm deep.

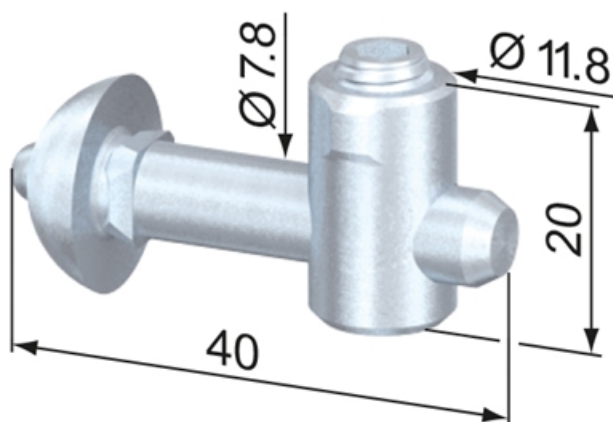
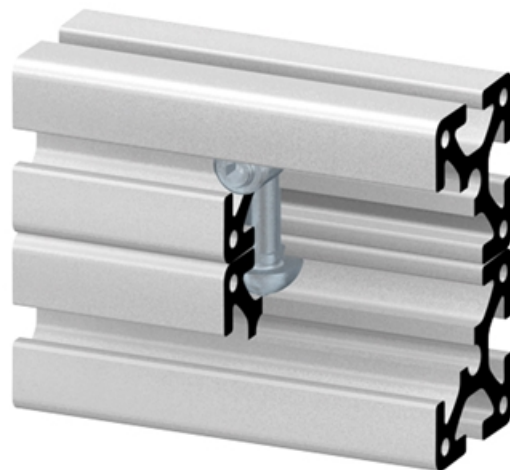
**Material:** Steel, zinc-plated

**System:** 40 - Slot 8

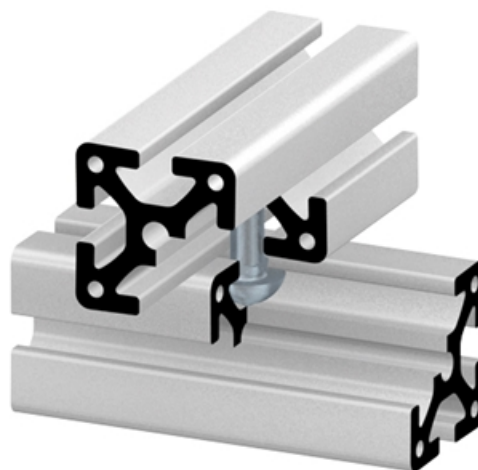
**Type:** Fasteners



SV1213V



SV1221V



## General Data

Designation	Description	System	Weight (g)
SV1221V	Central Fastener 40 SVL	40 - Slot 8	31

## Central Fastener 40 SVL

### Application:

All-purpose universal fastener. The slide-in anchor is held in position in the profile groove by a spring-loaded ball in the opposing profile t-slot. The SV fasteners have an anti-twist feature.

### Assembly:

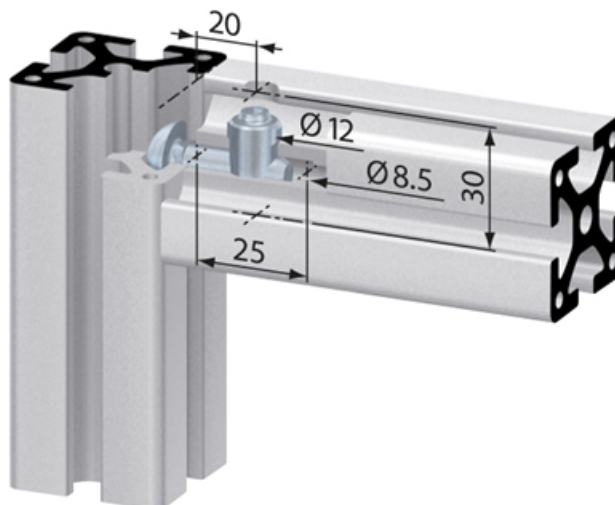
Bore hole for the barrel housing:  $\varnothing 12$  mm, 20 mm from profile end, 30 mm deep.

Bore for center hole on end of profile for anchor:  $\varnothing 8.5$  mm, 25 mm deep.

**Material:** Steel, zinc-plated

**System:** 40 - Slot 8

**Type:** Fasteners



## General Data

Designation	Description	System	Weight (g)
SV1222V	Central fastener SVL90	40 - Slot 8	31

## Automatic Fastening Set 40

### Application:

The automatic fastening set is quick and easy to use without modifying the profiles. Universal force-fit link for all profiles and option of moving them afterwards because the fastening sets are fitted in single profiles only. There is no restriction on installing them in existing constructions later.

### Supply:

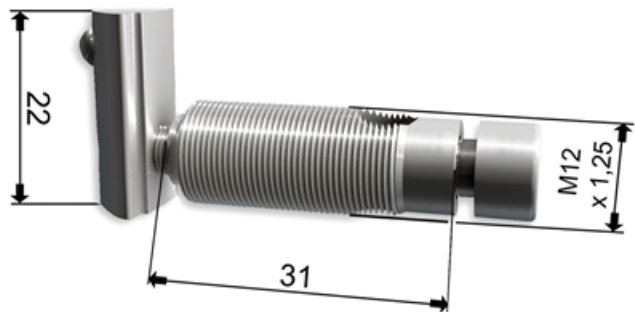
1 x socket head screw M6x40, galvanized  
 1 x slot nut M6 / ball-type push-in, galvanized,  
 1 hollow screw automatic tensioner, galvanized

### Assembly:

Insert the cylinder head screw M6x40 head first into the profile groove. Then the self-tapping hollow screw is screwed into the profile groove on the face side. You should use a lubricant for this. Then the slot nut M6 / ball-type push-in is plugged into the profile to be connected and the cylinder screw tightened. We recommend installing them in pairs.

**System:** 40 - Slot 8

**Type:** Fasteners





## General Data

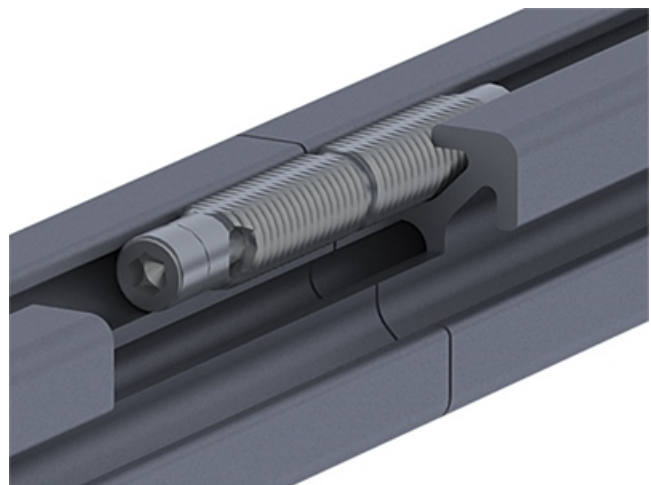
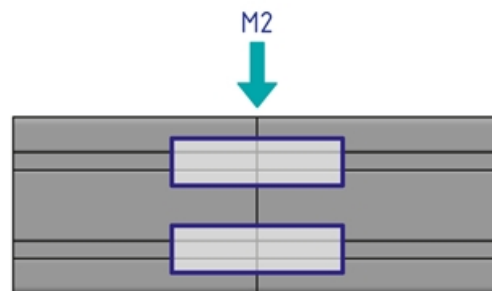
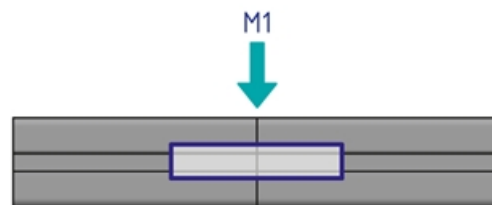
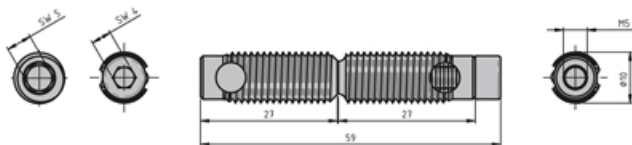
Designation	Description	System
PV1102	Automatic Fastening Set 40	40 - Slot 8

## Automatic Butt Connector

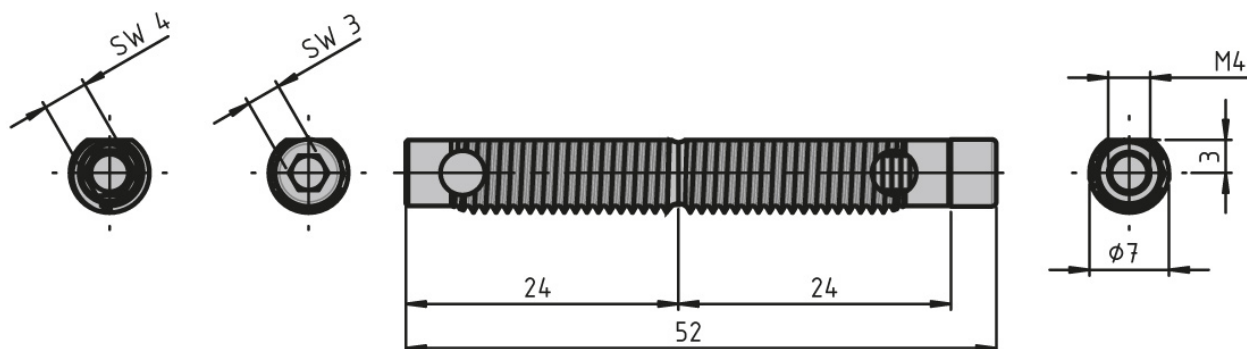
Use the automatic butt connector to quickly and easily link the face ends of two profiles from the same series without having to machine the profiles beforehand. Best practice is to use the automatic butt connectors in pairs. You may need several pairs, depending on the size and load on the profiles. Package includes the screw and cutting bush. Note: The load values refer to connectors installed in pairs

**System:** 30 - Slot 6; 20 - Slot 5; 40 - Slot 8

**Type:** Fasteners



## General Data



Designation	Description	System	M (Nm)	F (N)
<b>PV4040</b>	Set of automatic butt connectors	20 - Slot 5	22	1500
<b>PV1209</b>	Set of automatic butt connectors	20 - Slot 5	22	1500
<b>PV3050</b>	Set of automatic butt connectors	30 - Slot 6	45	1800
<b>PV1210</b>	Set of automatic butt connectors	30 - Slot 6	45	1800
<b>PV1105</b>	Set of automatic butt connectors	40 - Slot 8	140 (40x40L) / 170 (40x40)	4500

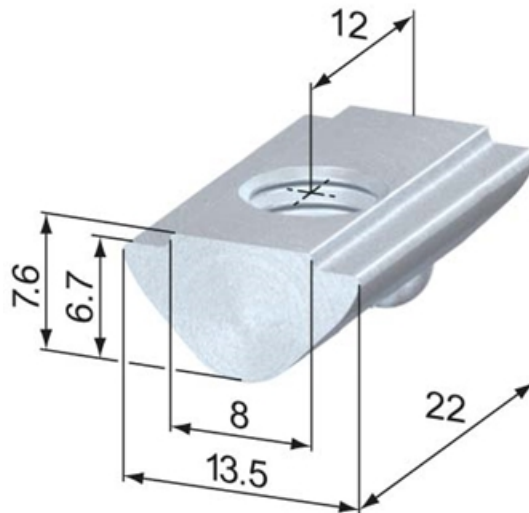
## T-Nuts, ball-type, push-in

### Application:

T-nut for swiveling into the t-slot. Fits into the t-slot at any point. Held in position by a spring-loaded ball. Raised area fits into the t-slot to stop twisting.

**System:** 40 - Slot 8

**Type:** T-nuts



T-Nuts, slide-in



T-Nuts, push-in



### T-Slot Strength

Information in regards to the maximum allowable t-slot load capability F. These values already include a safety factor ( $S > 2$ ) against plastic deformation.

Profile type	Max. pull charge F
standard	5000 N
double br.	3250 N
semi	2500 N
light	2000 N
superlight	1750 N



## General Data

Designation	System	Material	Thread	Weight (g)
<b>SV2110V</b>	40 - Slot 8	Steel, zinc-plated	M3	12
<b>SV2112V</b>	40 - Slot 8	Steel, zinc-plated	M4	11
<b>SV2114V</b>	40 - Slot 8	Stainless steel	M4	11
<b>SV2100V</b>	40 - Slot 8	Steel, zinc-plated	M5	11
<b>SV2104V</b>	40 - Slot 8	Stainless steel	M5	11
<b>SV2101V</b>	40 - Slot 8	Steel, zinc-plated	M6	10
<b>SV2105V</b>	40 - Slot 8	Stainless steel	M6	10
<b>SV2102V</b>	40 - Slot 8	Steel, zinc-plated	M8	9
<b>SV2106V</b>	40 - Slot 8	Stainless steel	M8	9

## T-Nuts, ball-type, push-in, flat

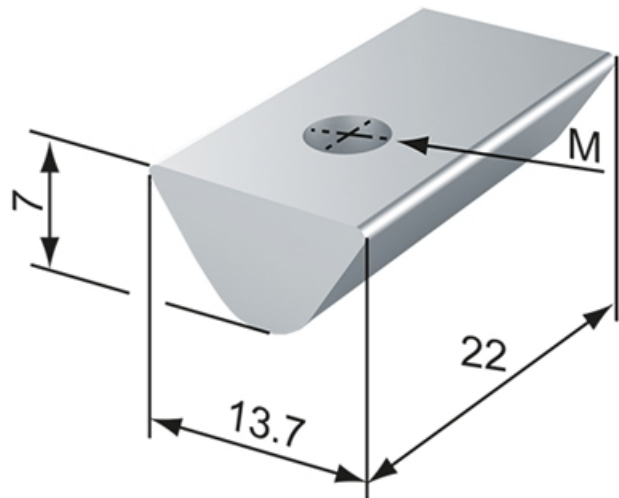
### Application:

T-nut for swiveling into the t-slot. Fits into the t-slot at any point. Held in position by a spring-loaded ball.

**Material:** Steel, zinc-plated

**System:** 40 - Slot 8

**Type:** T-nuts



T-Nuts, slide-in



T-Nuts, push-in



### T-Slot Strength

Information in regards to the maximum allowable t-slot load capability F. These values already include a safety factor ( $S > 2$ ) against plastic deformation.

Profile type	Max. pull charge F
standard	5000 N
double br.	3250 N
semi	2500 N
light	2000 N
superlight	1750 N



## General Data

Designation	System	Thread	Weight (g)
PN1030	40 - Slot 8	M4	11
PN1035	40 - Slot 8	M5	11
PN1040	40 - Slot 8	M6	10
PN1045	40 - Slot 8	M8	9

## T-Nuts, ball-type, slide-in

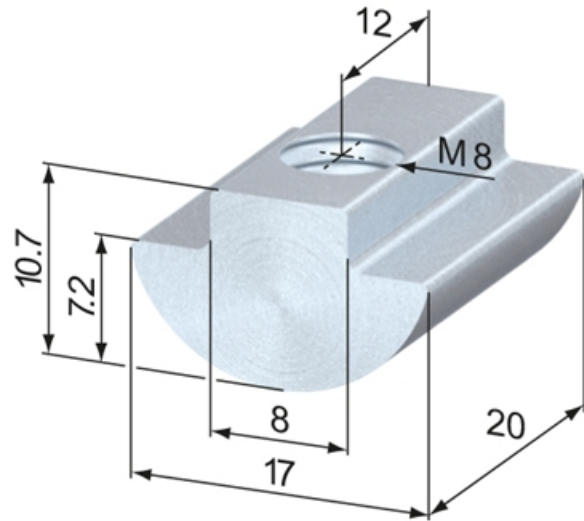
### Application:

Slides in the t-slot from the end of the profile and is held in position by a spring-loaded ball. The wide supporting surface of the t-nut makes it suitable for higher fastening forces. (SV2003V is machined after threading.)

**Material:** Steel, zinc-plated

**System:** 40 - Slot 8

**Type:** T-nuts



T-Nuts, slide-in



T-Nuts, push-in



### T-Slot Strength

Information in regards to the maximum allowable t-slot load capability F. These values already include a safety factor ( $S > 2$ ) against plastic deformation.

Profile type	Max. pull charge F
standard	5000 N
double br.	3250 N
semi	2500 N
light	2000 N
superlight	1750 N





## General Data

Designation	System	Thread	Weight (g)
SV2000V	40 - Slot 8	M5	17
SV2001V	40 - Slot 8	M6	17
SV2002V	40 - Slot 8	M8	15
SV2003V	40 - Slot 8	M8 S	14

## Square T-Nuts

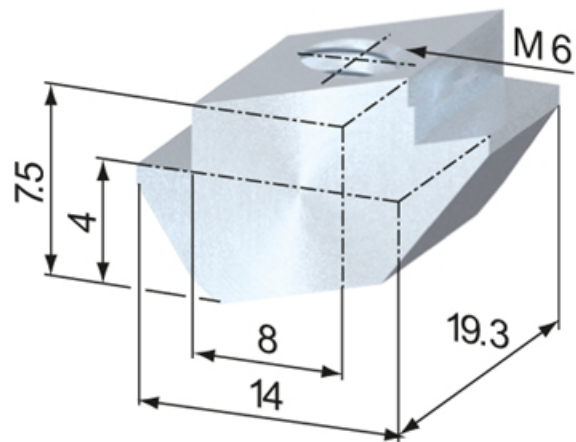
Application:

T-nut for swiveling into the t-slot. Fits into the t-slot at any point.

**Material:** GDZn (zinc die casting)

**System:** 40 - Slot 8

**Type:** T-nuts



T-Nuts, slide-in



T-Nuts, push-in



### T-Slot Strength

Information in regards to the maximum allowable t-slot load capability F. These values already include a safety factor ( $S > 2$ ) against plastic deformation.

Profile type	Max. pull charge F
standard	5000 N
double br.	3250 N
semi	2500 N
light	2000 N
superlight	1750 N



## General Data

Designation	System	Thread
SV2179N	40 - Slot 8	M5
SV2180N	40 - Slot 8	M6

## Fixing Blocks

### Application:

To mount panels to profiles with a t-slot width of 8mm. An M6 screw is required for installation.

SZ1512S for 2 mm panels.

SZ1514S for 4 mm panels.

SZ1516S for 6 mm panels.

SZ1518S for 8 mm panels.

SZ1510S facilitate the entire 2 - 8 mm range of panels.

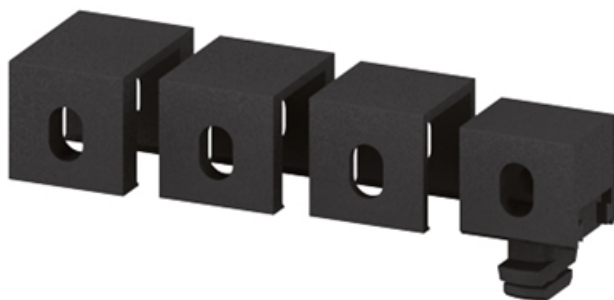
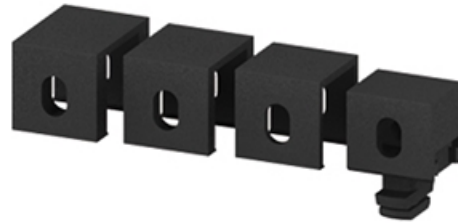
### Acc.:

SZ1510S fixing block 40 Vario is a complete set. It includes four different sized, removable caps to accommodate panels with 2 - 8 mm thickness.

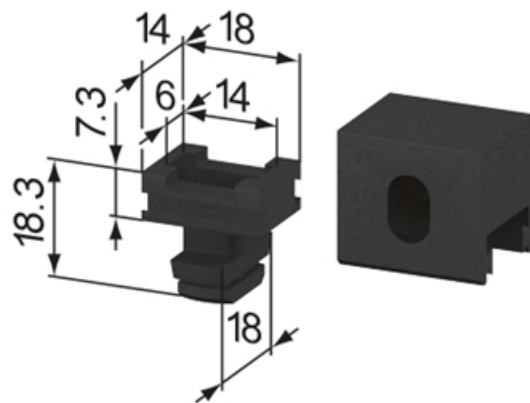
**Material:** PA, black

**System:** 40 - Slot 8

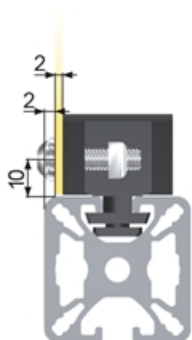
**Type:** Fixing Blocks/Fastening Elements



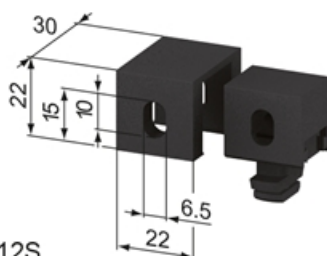
SZ1510S



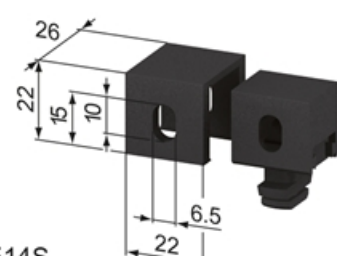
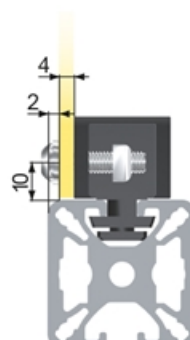
Insert for SZ1510S



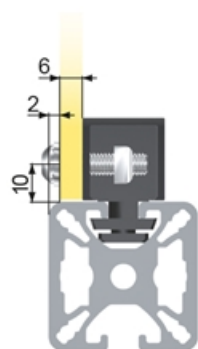
SZ1512S



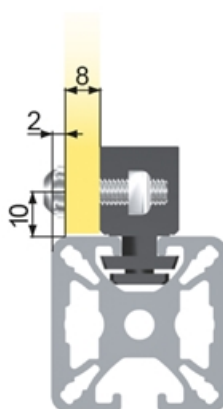
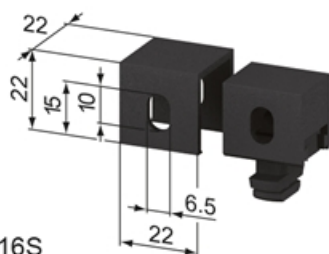
SZ1514S



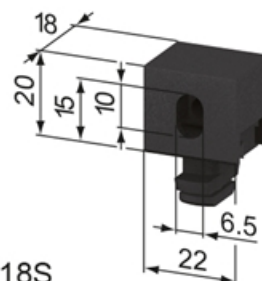
## Fixing Blocks



SZ1516S



SZ1518S



## General Data

Designation	Description	System	Weight (g)	Compatible with
<b>SZ1510S</b>	Fixing Block 40 vario	40 - Slot 8	27	2-8 mm panels
<b>SZ1512S</b>	Fixing Block 40 / 2	40 - Slot 8	19	2 mm panels
<b>SZ1514S</b>	Fixing Block 40 / 4	40 - Slot 8	16	4 mm panels
<b>SZ1516S</b>	Fixing Block 40 / 6	40 - Slot 8	14	6 mm panels
<b>SZ1518S</b>	Fixing Block 40 / 8	40 - Slot 8	10	8 mm panels

## Fixing Angles

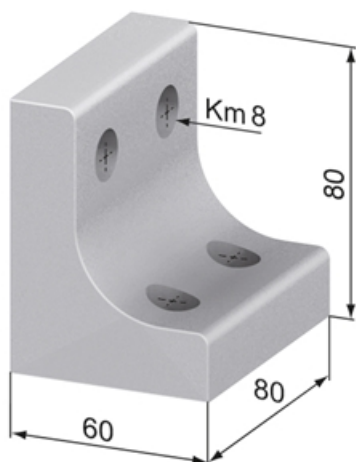
Application:

For right-angled fixing and stabilizing of profiles.

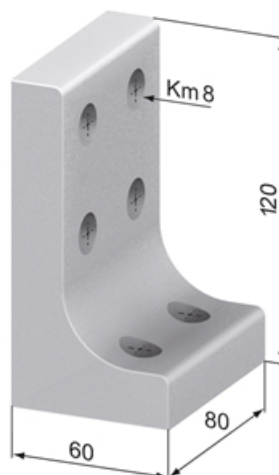
**Material:** Aluminium, natural anodized

**System:** 40 - Slot 8

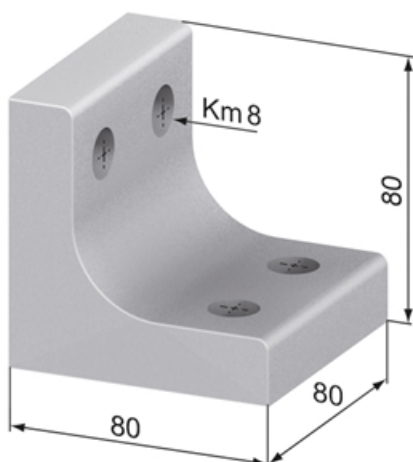
**Type:** Angles Brackets and Corners; Fasteners



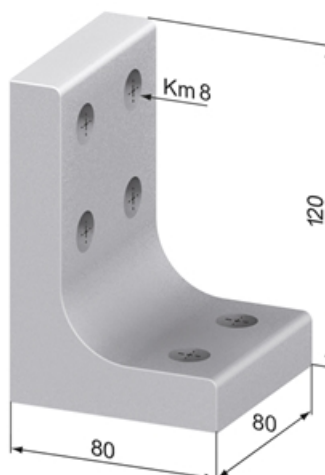
SZ0980N



SZ0990N

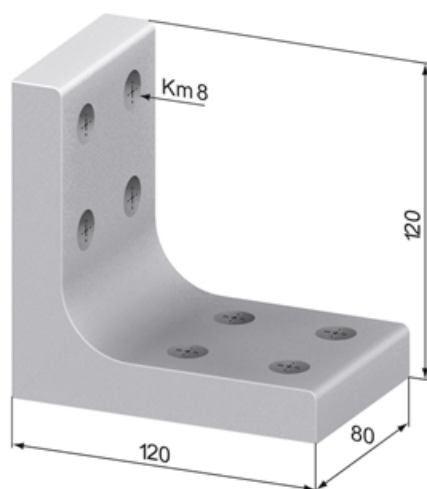


SZ0985N



SZ0995N

## Fixing Angles



SZ0997N



## General Data

Designation	Description	System	Weight (g)
<b>SZ0980N</b>	Fixing Angle 60 x 80	40 - Slot 8	523
<b>SZ0990N</b>	Fixing Angle 60 x 120	40 - Slot 8	683
<b>SZ0985N</b>	Fixing Angle 80 x 80	40 - Slot 8	610
<b>SZ0995N</b>	Fixing Angle 80 x 120	40 - Slot 8	742
<b>SZ0997N</b>	Fixing Angle 120 x 120	40 - Slot 8	875

## Fixing Angles 40

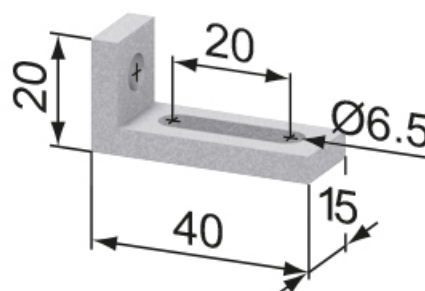
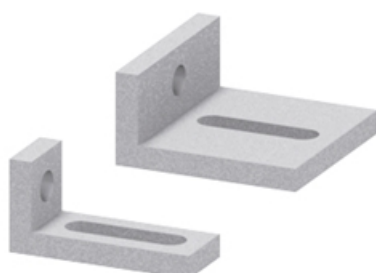
Application:

For right-angled fixing of profiles.

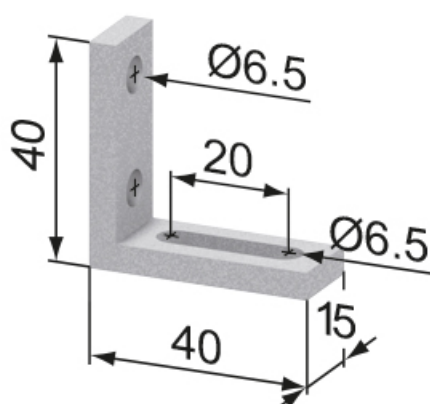
**Material:** Aluminium, natural anodized

**System:** 40 - Slot 8

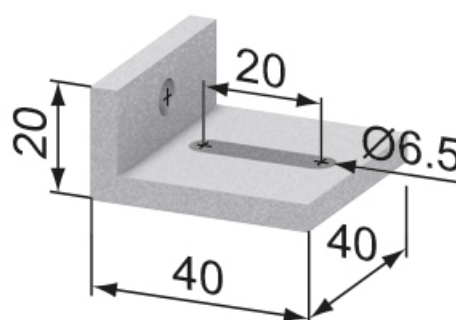
**Type:** Angles Brackets and Corners; Fasteners



**SZ0910N**

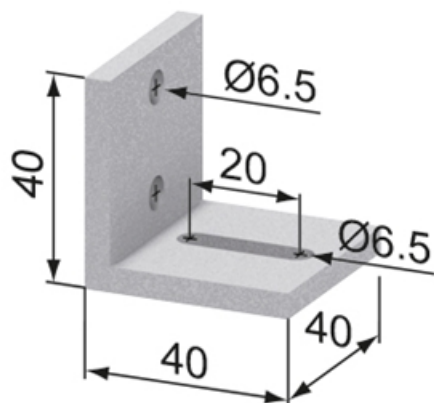


**SZ0920N**



**SZ0916N**

## Fixing Angles 40



SZ0926N

## General Data

Designation	Description	System	Weight (g)
<b>SZ0910N</b>	Fixing Angle 40 x 20 x 15	40 - Slot 8	9
<b>SZ0912N</b>	Fixing Angle 40 x 20 x 20	40 - Slot 8	13
<b>SZ0914N</b>	Fixing Angle 40 x 20 x 30	40 - Slot 8	20
<b>SZ0916N</b>	Fixing Angle 40 x 20 x 40	40 - Slot 8	27
<b>SZ0920N</b>	Fixing Angle 40 x 40 x 15	40 - Slot 8	12
<b>SZ0922N</b>	Fixing Angle 40 x 40 x 20	40 - Slot 8	17
<b>SZ0924N</b>	Fixing Angle 40 x 40 x 30	40 - Slot 8	27
<b>SZ0926N</b>	Fixing Angle 40 x 40 x 40	40 - Slot 8	37

## Fixing Angles 70 x 70

### Application:

For right-angled fixing of profiles without the need of machining the profiles. Comes with required fixing set.

### Supply:

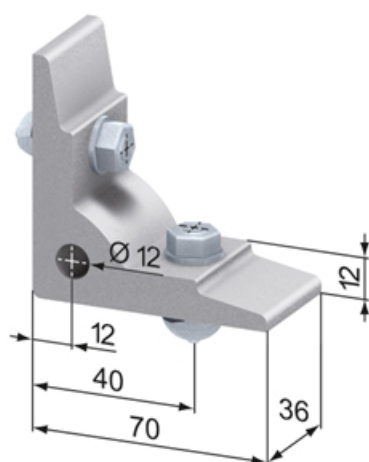
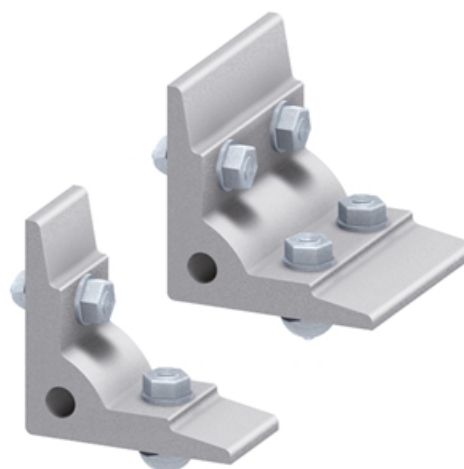
SZ0941N: 4x anchor screw (M8 x 32)

SZ0940N: 2x anchor screw (M8 x 32), 2x anti-twist set screw

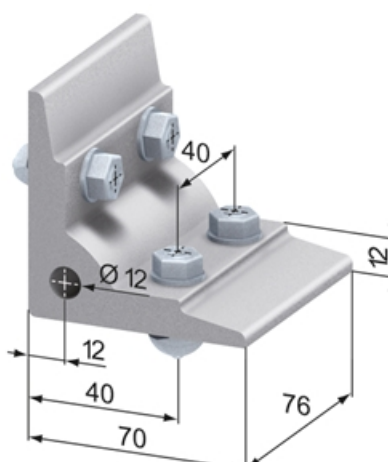
**Material:** Aluminium, natural anodized

**System:** 40 - Slot 8

**Type:** Angles Brackets and Corners; Fasteners



**SZ0940N**



**SZ0941N**

## General Data

Designation	Description	System	Weight (g)
<b>SZ0940N</b>	Fixing Angle 70 x 70 x 36	40 - Slot 8	166
<b>SZ0941N</b>	Fixing Angle 70 x 70 x 76	40 - Slot 8	344

## Angles 120 x 120

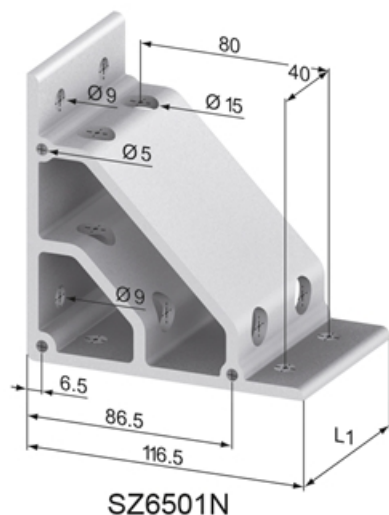
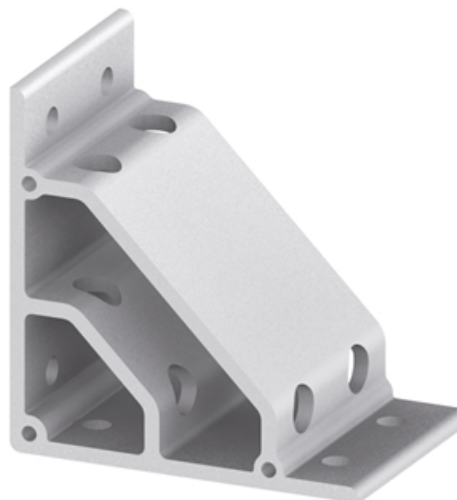
Application:

For right-angled fixing of profiles.

**Material:** Aluminium, natural anodized

**System:** 40 - Slot 8

**Type:** Angles Brackets and Corners; Fasteners



## General Data

Designation	Description	System	Number of Fixing Holes	Weight (g)
<b>SZ6500N</b>	Angle 120 x 120 x 40	40 - Slot 8	4	210
<b>SZ6501N</b>	Angle 120 x 120 x 80	40 - Slot 8	8	424
<b>SZ6502N</b>	Angle 120 x 120 x 120	40 - Slot 8	12	636



## Clamp Angles

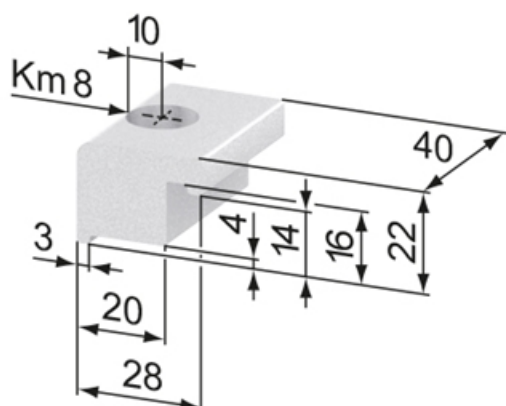
Application:

For right-angled fixing of profiles.

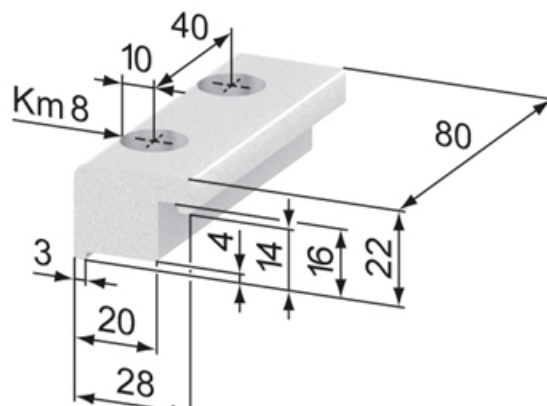
**Material:** Aluminium, natural anodized

**System:** 40 - Slot 8

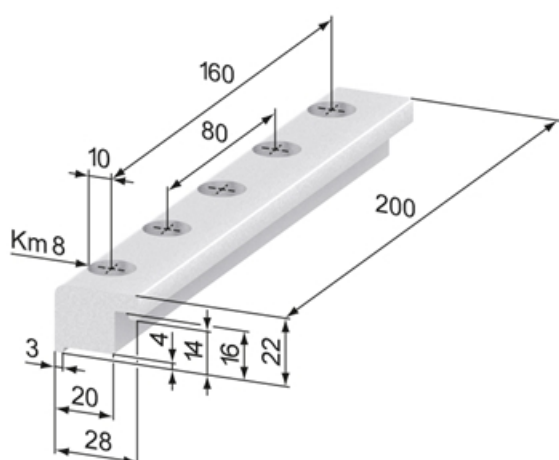
**Type:** Angles Brackets and Corners; Fasteners



**SZ6550N**



**SZ6551N**



**SZ6554N**

## General Data

Designation	Description	System	Number of Fixing Holes	Weight (g)
<b>SZ6550N</b>	Clamp Angle 28 x 22 x 40	40 - Slot 8	1	41
<b>SZ6551N</b>	Clamp Angle 28 x 22 x 80	40 - Slot 8	2	83

## Mounting Angle

Variable angles for mounting components.

Oblong holes provide a wide range of position and angle adjustment. Use up to M6 screws to attach them.

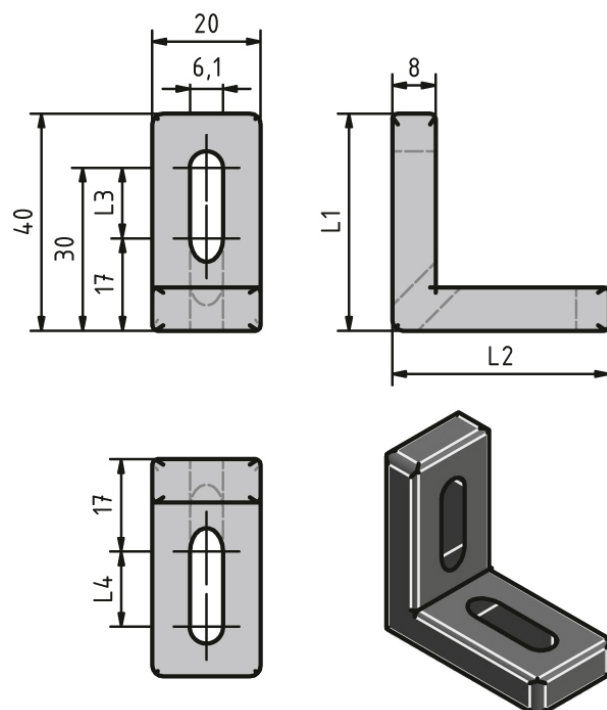
Material: Black die-cast zinc

**System:** 40 - Slot 8; 30 - Slot 6; 20 - Slot 5

**Type:** Angles Brackets and Corners; Fasteners



## General Data



Designation	L1	L2	L3	L4
<b>PZ1920</b>	40	40	13	13
<b>PZ1925</b>	60	40	33	13
<b>PZ1935</b>	80	40	53	13

## Corner Fasteners

### Application:

For right-angled fixing of profiles.

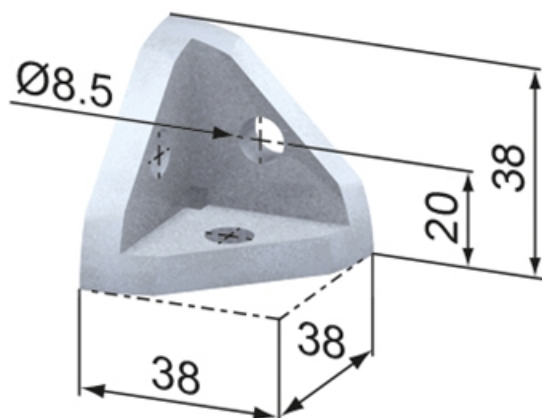
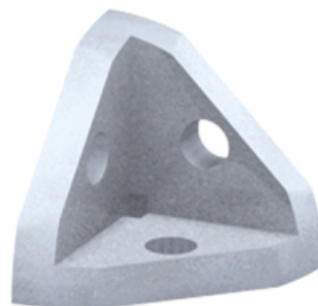
### Supply:

Corner fastener sets contain the corner fastener 40 x 40 45°, three button head screws M 8 x 20, ISO 7380, and the appropriate cap.

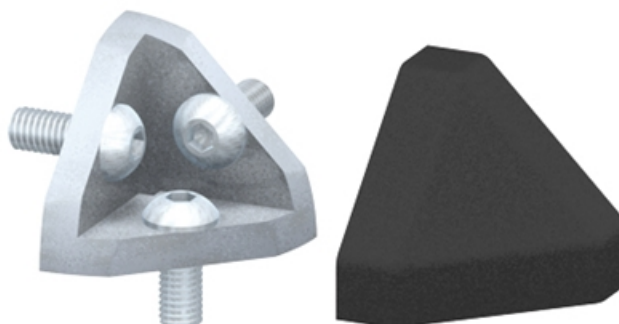
**Material:** GDZn (zinc diecasting), natural & PA 6, black

**System:** 40 - Slot 8

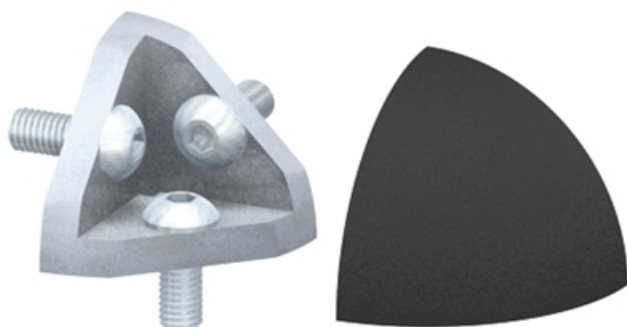
**Type:** Angles Brackets and Corners; Fasteners



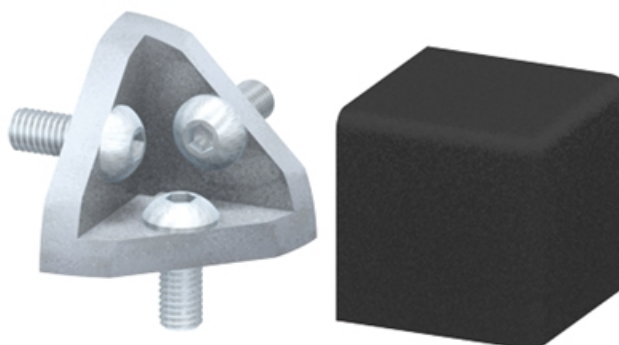
**SZ0931S**



**SZ0930S**



**SZ0932S**



**SZ0933S**

## General Data

Designation	Description	System	Weight (g)
<b>SZ0931S</b>	Corner Fastener 40 x 40 45°	40 - Slot 8	89
<b>SZ0930S</b>	Corner Fastener Set 40 x 40 45°	40 - Slot 8	127
<b>SZ0932S</b>	Corner Fastener Set 40 x 40, round	40 - Slot 8	127
<b>SZ0933S</b>	Corner Fastener Set 40 x 40, edge	40 - Slot 8	135

## Round Corners

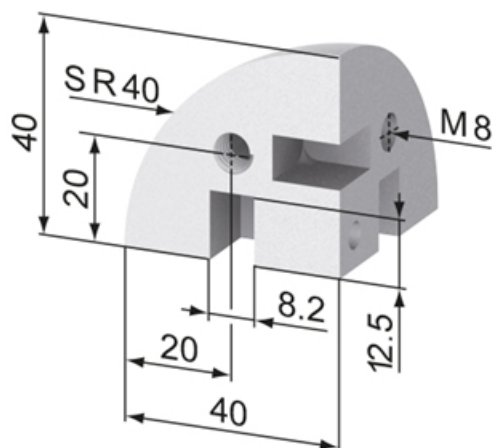
Application:

For right-angled fixing of round profiles.

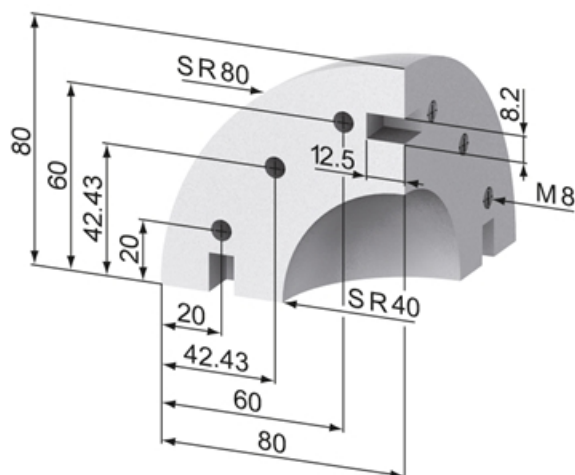
**Material:** Aluminium, natural anodized

**System:** 40 - Slot 8

**Type:** Angles Brackets and Corners; Fasteners



SZ5050N



SZ5045N



## General Data

Designation	Description	System	Weight (g)
<b>SZ5050N</b>	Round Corner 40	40 - Slot 8	74
<b>SZ5045N</b>	Round Corner 80	40 - Slot 8	584



## Gusset Plates AL

### Application:

Gusset plates are suitable for strengthening t- and corner connections of profiles within machine frames and jigs.

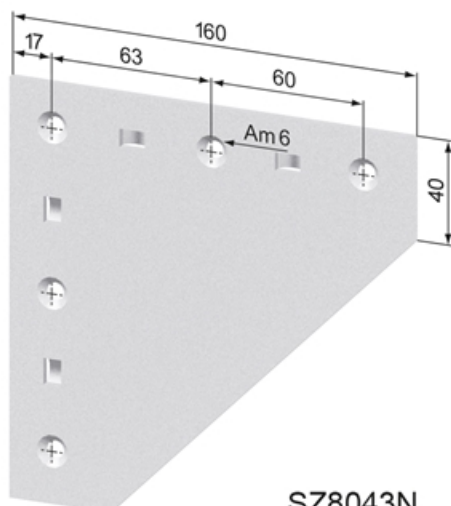
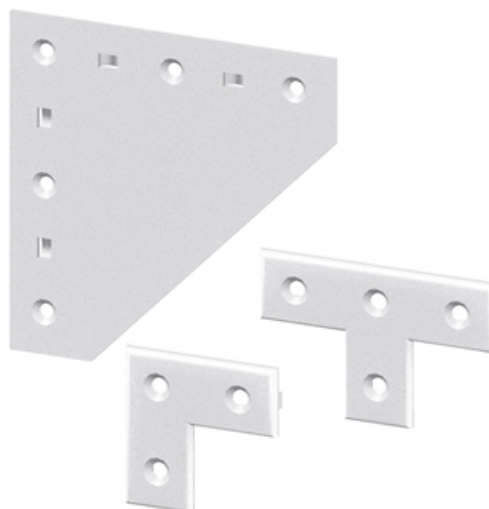
### Supply:

Gusset plates and appropriate fixing sets are available separately as well as in complete sets.

**Material:** Aluminium, natural anodized

**System:** 40 - Slot 8

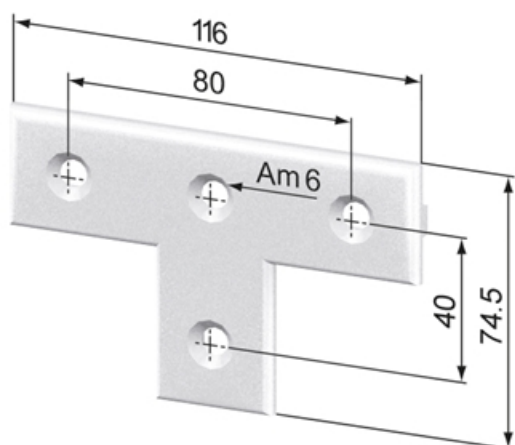
**Type:** Angles Brackets and Corners; Fasteners



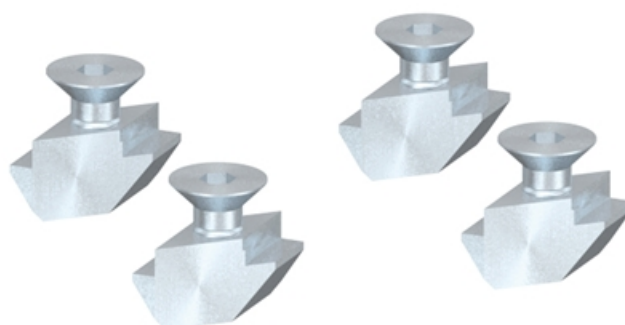
SZ8043N



SZ0780V

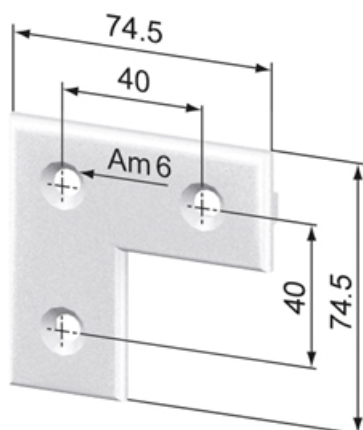


SZ8070N

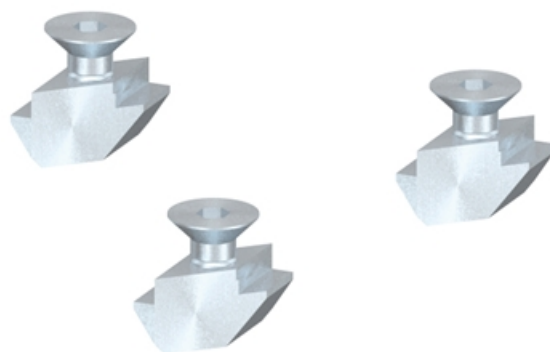


SZ0784V

## Gusset Plates AL



SZ8060N



SZ0782V

## General Data

Designation	Description	System	Weight (g)
<b>SZ8043N</b>	Gusset Plate Al, 160 x 160	40 - Slot 8	140
<b>SZ0780V</b>	Fixing Set For Gusset Plate Al, 160 x 160	40 - Slot 8	3
<b>SZ8048N</b>	Gusset Plate Al, 160 x 160, complete	40 - Slot 8	176
<b>SZ8070N</b>	Gusset Plate Al, t-version	40 - Slot 8	150
<b>SZ0784V</b>	Fixing Set For Gusset Plate Al, t-version	40 - Slot 8	40
<b>SZ8060N</b>	Gusset Plate Al, angle	40 - Slot 8	150
<b>SZ0782V</b>	Fixing Set For Gusset Plate Al, angle	40 - Slot 8	40
<b>SZ8065N</b>	Gusset Plate Al, angle, complete	40 - Slot 8	134

## Attachment Plates

### Application:

To attach profiles onto assemblies, work benches, etc. Can also be used to connect profiles one to another.

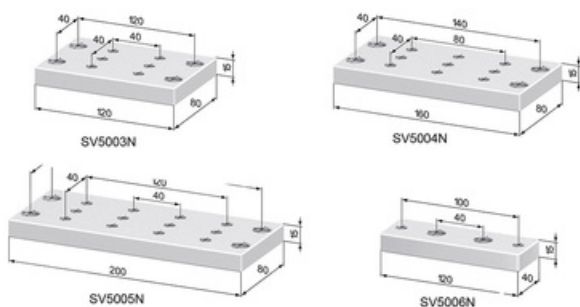
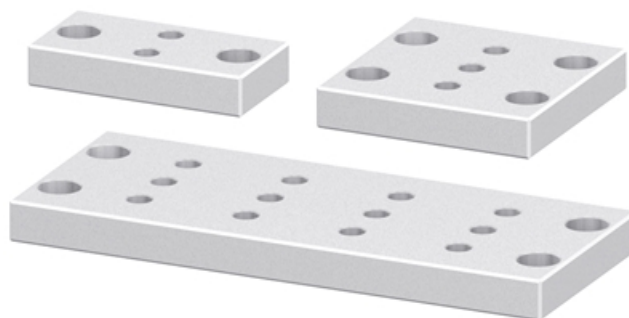
### Supply:

1 x attachment plate

**Material:** Aluminium, natural anodized

**System:** 40 - Slot 8

**Type:** Attachment Plates



## General Data

Designation	Description	System	Weight (g)
<b>SV5003N</b>	Attachment Plate 80 x 120	40 - Slot 8	390
<b>SV5004N</b>	Attachment Plate 80 x 160	40 - Slot 8	520
<b>SV5005N</b>	Attachment Plate 80 x 200	40 - Slot 8	650
<b>SV5006N</b>	Attachment Plate 40 x 120	40 - Slot 8	190

## Attachment Plates, angled

### Application:

For bracing two profiles by either attaching two 45° plates or one 30° plate and one 60° plate to the 80 x 80 profiles.

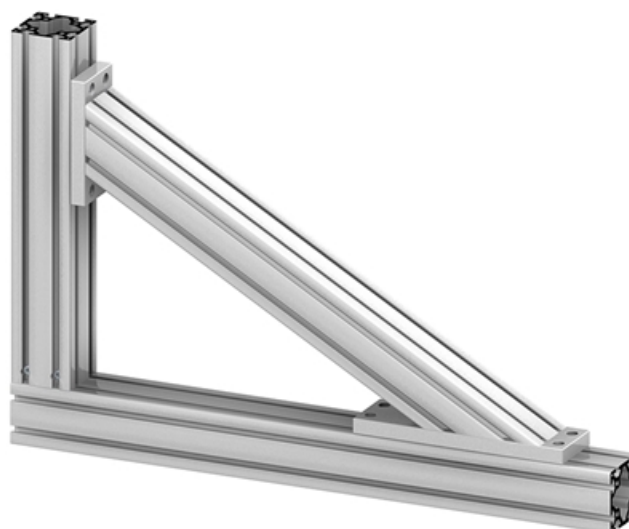
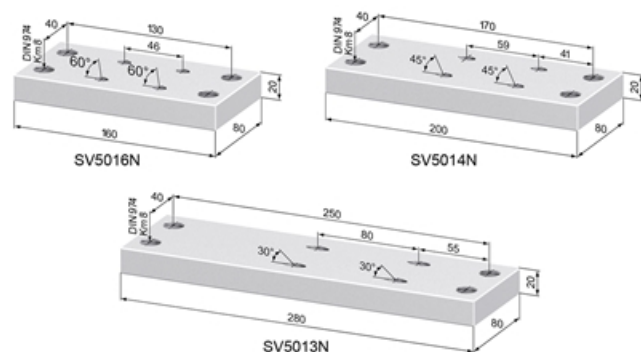
### Supply:

1 x attachment plate

**Material:** Aluminium, natural anodized

**System:** 40 - Slot 8

**Type:** Attachment Plates



## General Data

Designation	Description	System	Weight (g)
<b>SV5016N</b>	Attachment Plate 60°, 80 x 160	40 - Slot 8	635
<b>SV5014N</b>	Attachment Plate 45°, 80 x 200	40 - Slot 8	800
<b>SV5013N</b>	Attachment Plate 30°, 80 x 280	40 - Slot 8	1130

## Central Fastener 40 EL / EQ

### Application:

All-purpose universal fastener. The twist-in anchor, with an anti-twist feature, can be fixed in the profile groove at any point. The anchor is held in position by a spring-loaded ball in the opposing profile t-slot.

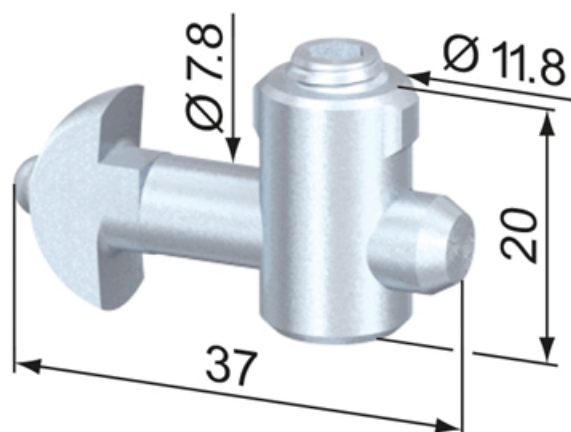
### Assembly:

Bore hole for the barrel housing:  $\varnothing 12$  mm, 15 mm from profile end, 30 mm deep.

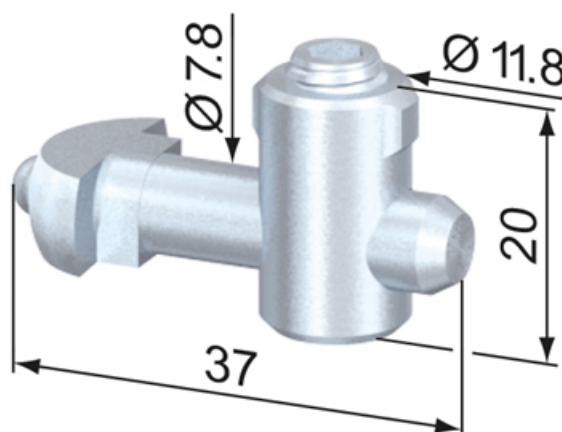
Bore for center hole on end of profile for anchor:  $\varnothing 8.5$  mm, 25 mm deep.

**System:** 40 - Slot 8

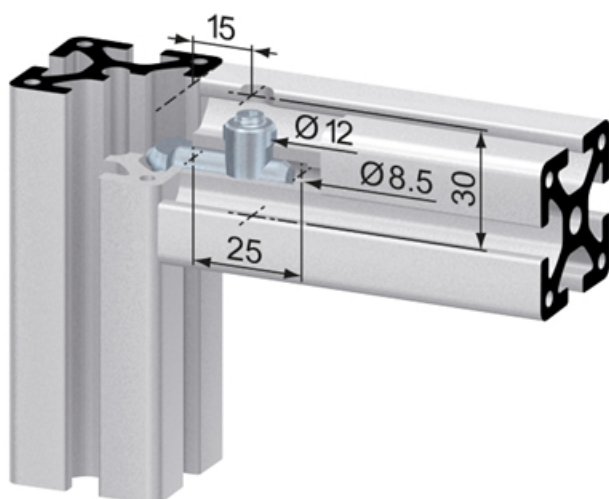
**Type:** Fasteners



**SV1011V**



**SV1021V**





## General Data

Designation	Description	System	Material	Weight (g)
SV1011V	Central Fastener 40 EL	40 - Slot 8	Steel, zinc-plated	26
SV1021V	Central Fastener 40 EQ	40 - Slot 8	Steel, zinc-plated	26

## Central Fastener G 30 SS / G 45 SS

### Application:

The anchor is screwed into the t-nut at either 30° or 45°. Special angles are available on request.

### Assembly:

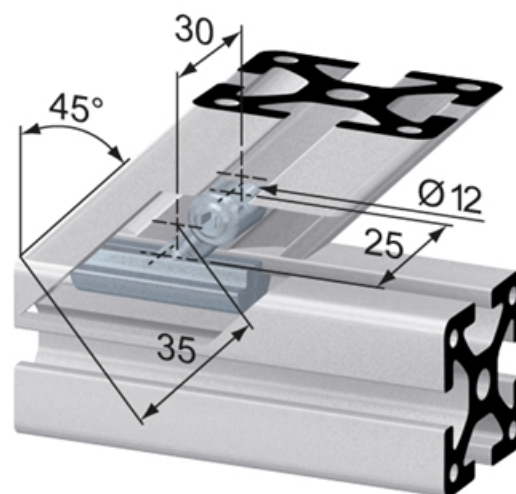
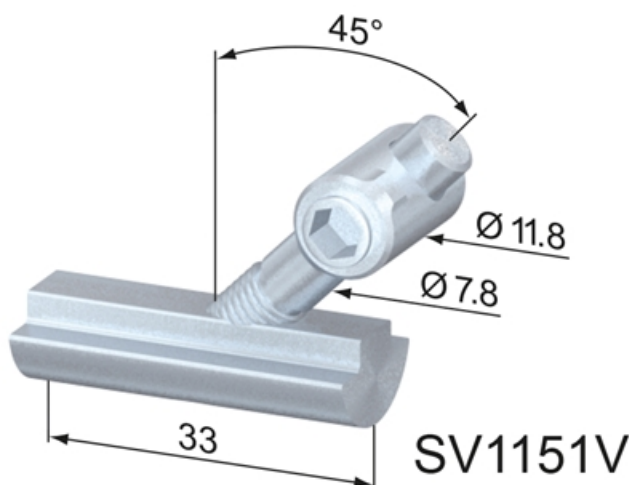
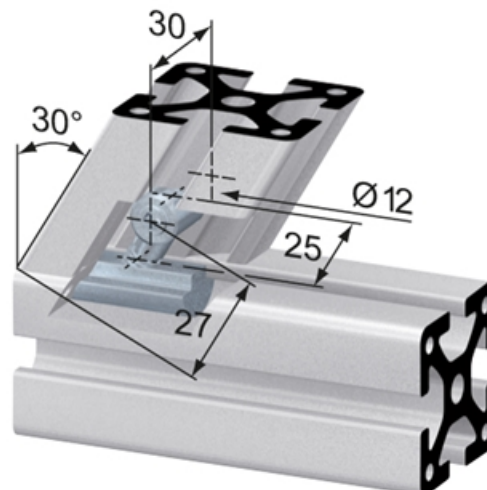
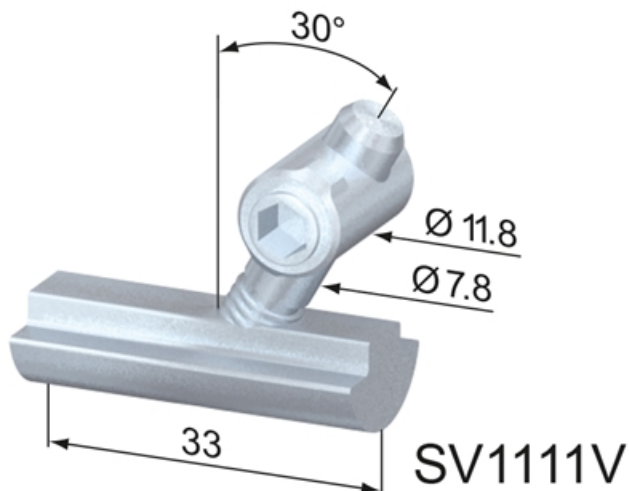
Bore hole for the barrel housing: Ø 12 mm, 27 mm (35 mm) from profile end, 30 mm deep.

Bore for center hole on end of profile for anchor: Ø 8.5 mm, 25 mm deep.

**Material:** Steel, zinc-plated

**System:** 40 - Slot 8

**Type:** Fasteners



## General Data

Designation	Description	System	Weight (g)
SV1111V	Central Fastener G 30 SS	40 - Slot 8	56
SV1151V	Central Fastener G 45 SS	40 - Slot 8	57

## Central Fastener 40 90°

### Application:

Fastener for 90° mitered joint, cut angle is 45°

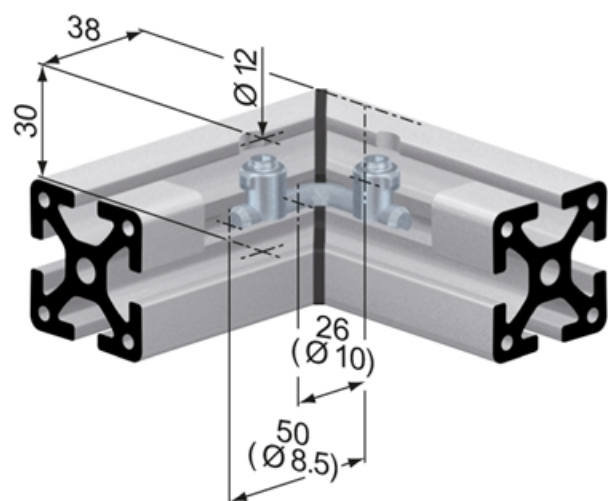
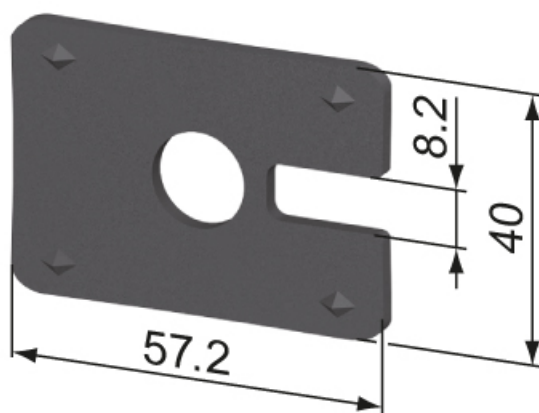
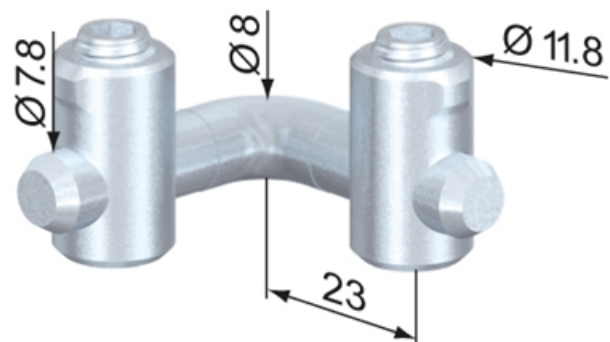
### Assembly:

Bore hole for the barrel housing (2x): Ø 12 mm, 38 mm from profile end, 30 mm deep.

Bore for center hole on end of profile for anchor (2x): Ø 8.5 mm, 50 mm deep; Ø 10 mm, 26 mm deep.

**System:** 40 - Slot 8

**Type:** Fasteners



## General Data

Designation	Description	System	Material	Weight (g)
<b>SV1650V</b>	Central Fastener 40 90°	40 - Slot 8	Steel, zinc-plated	42
<b>SV1660V</b>	Plastic Corner 40 90°	40 - Slot 8	POM, black	8

## Central Fastener 40 120°

### Application:

Fastener for 60° mitered joint, cut angle is 60°

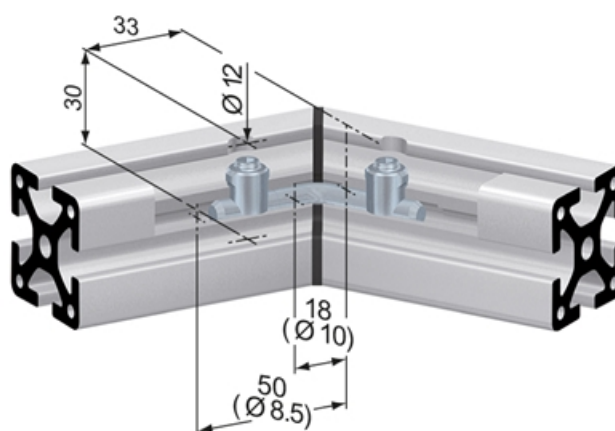
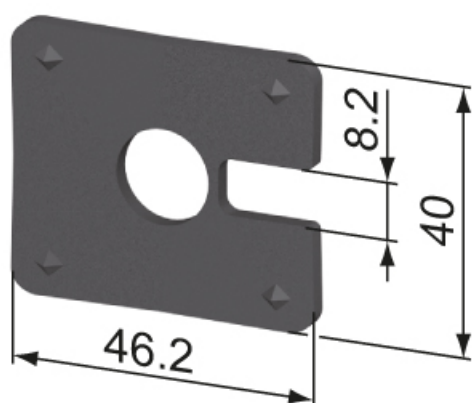
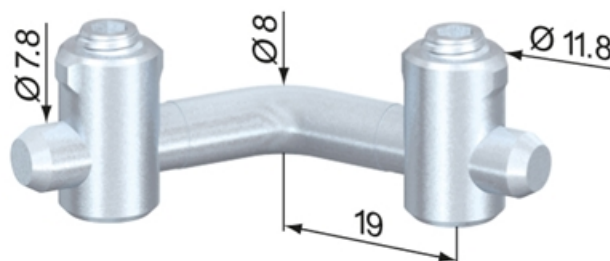
### Assembly:

Bore hole for the barrel housing (2x): Ø 12 mm, 33 mm from profile end, 30 mm deep.

Bore for center hole on end of profile for anchor (2x): Ø 8.5 mm, 50 mm deep; Ø 10 mm, 26 mm deep.

**System:** 40 - Slot 8

**Type:** Fasteners



## General Data

Designation	Description	System	Material	Weight (g)
SV1640V	Central Fastener 40 120°	40 - Slot 8	Steel, zinc-plated	40

## Central Fastener 40 135°

### Application:

Fastener for 45° mitered joint, cut angle is 67,5°.

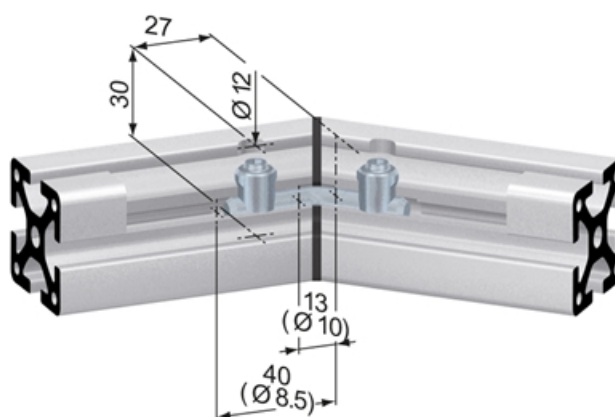
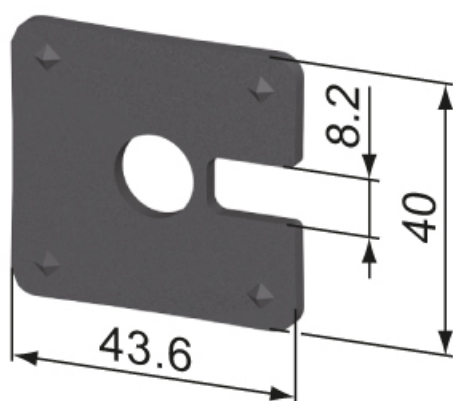
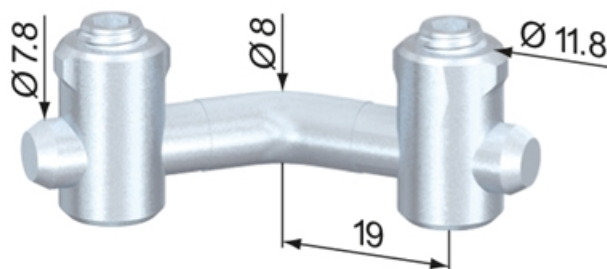
### Assembly:

Bore hole for the barrel housing (2x): Ø 12 mm, 27 mm from profile end, 30 mm deep

Bore for center hole on end of profile for anchor (2x): Ø 8.5 mm, 40 mm deep; Ø 10 mm, 26 mm deep

**System:** 40 - Slot 8

**Type:** Fasteners





## General Data

Designation	Description	System	Material	Weight (g)
SV1645V	Central Fastener 40 135°	40 - Slot 8	Steel, zinc-plated	42
SV1665V	Plastic Corner 40 135°	40 - Slot 8	POM, black	6

## Central Fastener 40 G

### Application:

Butt fastener. Used for joining two profiles end to end or for frontal attaching of plates. The anchor is screwed into the opposing profile or plate.

### Assembly:

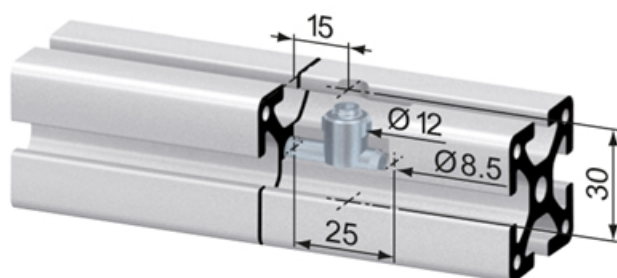
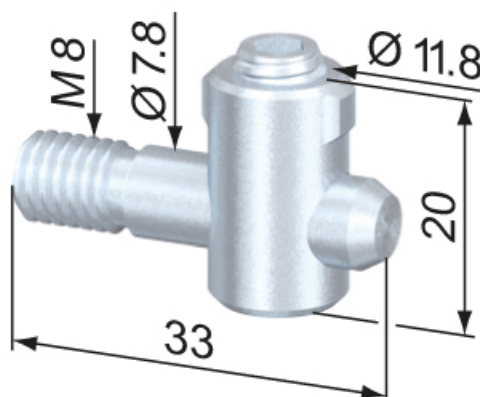
Bore hole for the barrel housing:  $\varnothing 12$  mm, 15 mm from profile end, 30 mm deep.

Bore for center hole on end of profile for anchor:  $\varnothing 8.5$  mm, 25 mm deep.

**Material:** Steel, zinc-plated

**System:** 40 - Slot 8

**Type:** Fasteners



## General Data

Designation	System	Weight (g)
SV1071V	40 - Slot 8	22

## Central Fastener 40 GC / GCV

### Application:

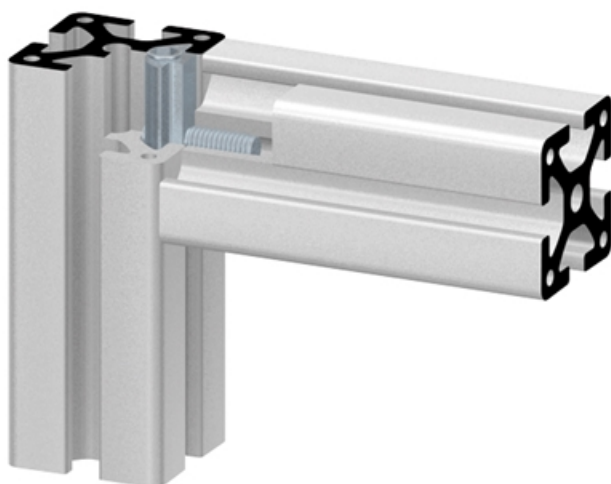
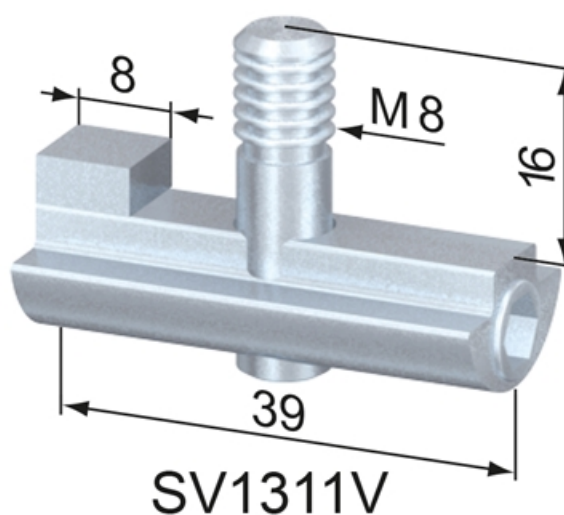
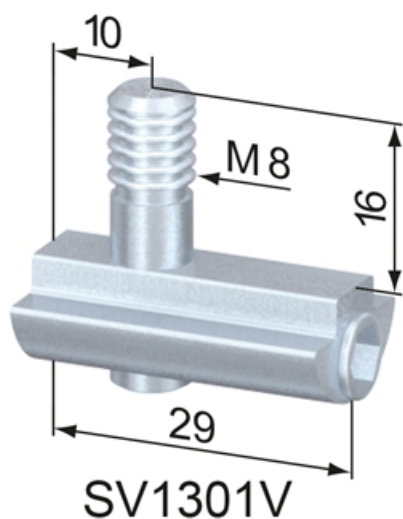
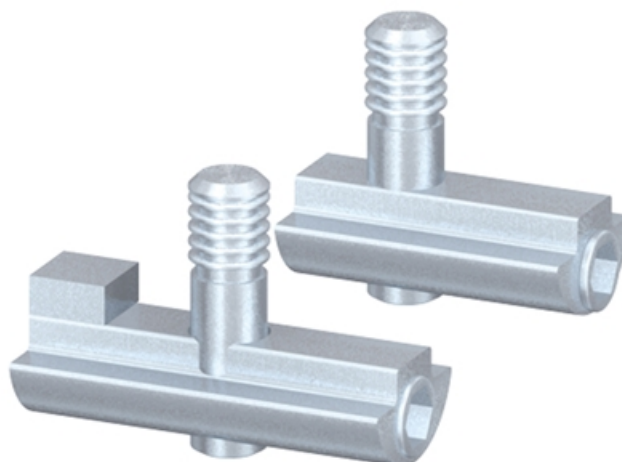
All-purpose universal fastener. Uses a slide-in t-nut with locking grub screw. The anchor with M8 thread is screwed into the opposing profile. The Central Fastener 40 GCV includes an anti-twist feature.

### Assembly:

Slide t-nut portion into the t-slot from the end of the profile. Tap center hole of mating profile with an M8 thread and screw in threaded anchor. Twist to orient indented portion of fastener so that it is facing the same direction as the barrel housing.

**System:** 40 - Slot 8

**Type:** Fasteners



## General Data

Designation	Description	System	Weight (g)
SV1301V	Central Fastener 40 GC	40 - Slot 8	30.7
SV1311V	Central Fastener 40 GCV	40 - Slot 8	40.8

## Dummy Plug

**Application:**

Use the dummy plugs to close the drill hole in closed slots.

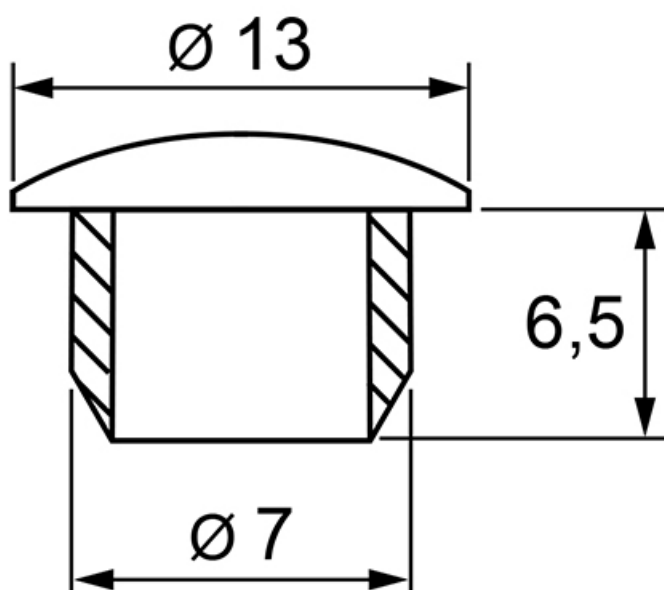
**Material:** PVC

**System:** 40 - Slot 8

**Type:** Fasteners



## General Data



Designation	Description	System
PA1110	Cap 8 D7, black	40 - Slot 8
PA1115	Cap 8 D7, grey	40 - Slot 8

## Pneumatic Fastener 40

Application:

For extending profile runs used as compressed air lines.  
Can also be used to extend standard profile runs.

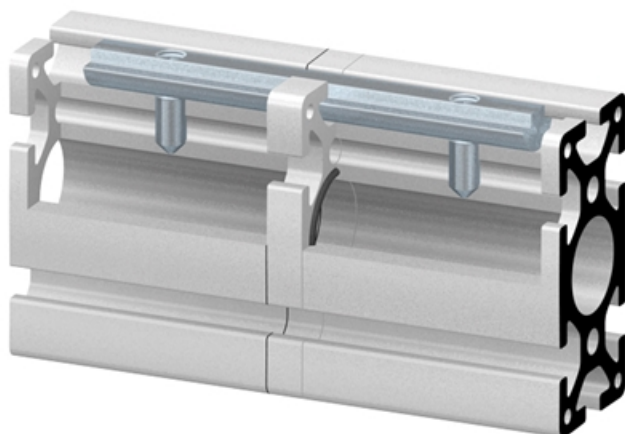
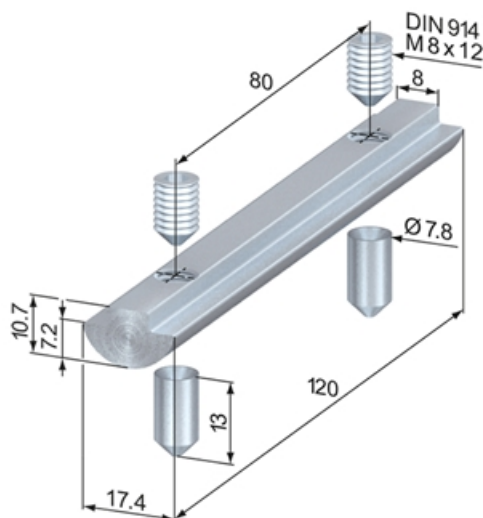
Supply:

1 x t-nut M8, slide-in, L = 120 mm  
2 x tensioning bush  
2 x grub screw M8 x 12, zinc-plated

**Material:** Steel, zinc-plated

**System:** 40 - Slot 8

Type: Fasteners





## General Data

Designation	System	Weight (g)
SV3500V	40 - Slot 8	114

## Attachment Screws

### Application:

Attaching accessories and sheet material to profiles. The twist-in attachment screw, with an anti-twist feature, can be fixed in the profile groove at any point and is held in position by a spring-loaded ball.

### Supply:

1 x hexagon nut M6 (M8), DIN 934, Zn

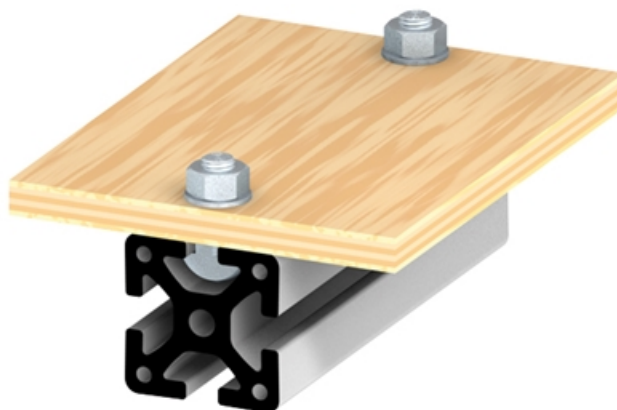
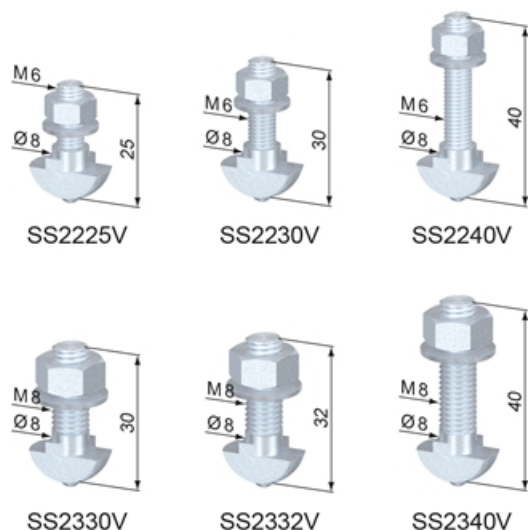
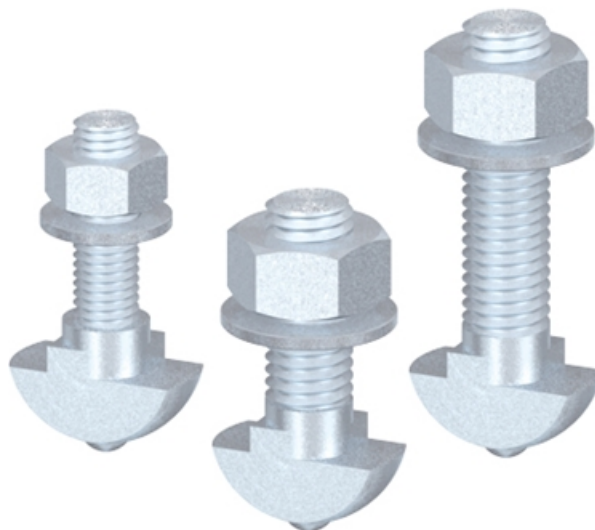
1 x washer M6 (M8), DIN 125

1 x attachment screw M6 (M8) x L

**Material:** Steel, zinc-plated

**System:** 40 - Slot 8

**Type:** Fasteners



## General Data

Designation	Description	System	Weight (g)
<b>SS2225V</b>	Attachment Screw M6 / L 25	40 - Slot 8	12
<b>SS2230V</b>	Attachment Screw M6 / L 30	40 - Slot 8	12
<b>SS2240V</b>	Attachment Screw M6 / L 40	40 - Slot 8	15
<b>SS2330V</b>	Attachment Screw M8 / L 30	40 - Slot 8	20
<b>SS2332V</b>	Attachment Screw M8 / L 32	40 - Slot 8	20
<b>SS2340V</b>	Attachment Screw M8 / L 40	40 - Slot 8	22

## Potential Equalizers

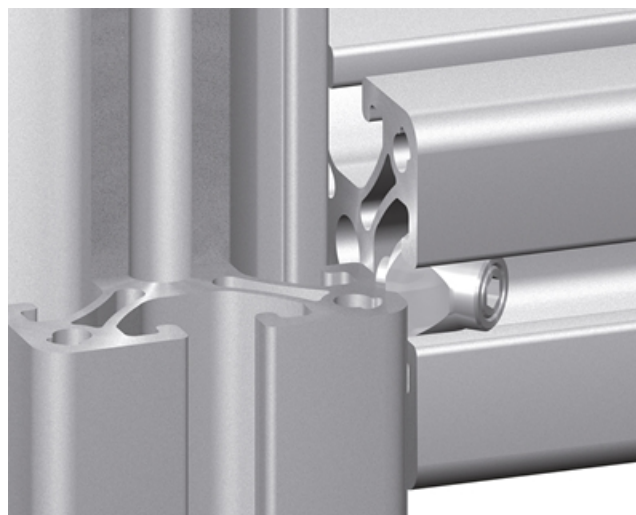
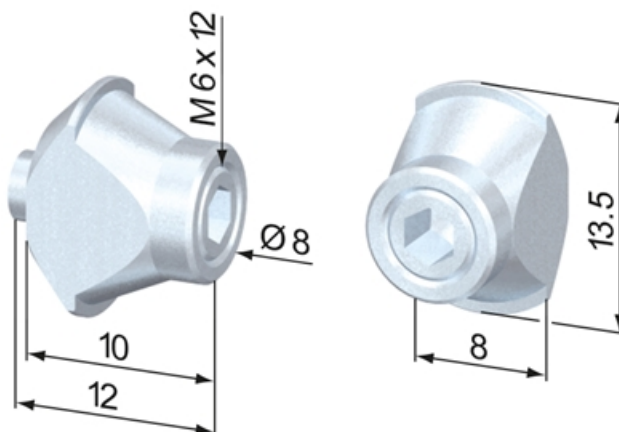
### Application:

For the bonding of machine frames. Establishes an electrical conductivity connection between two profiles. The potential equalizer must not be used to carry current or become description of a protective circuit.

**Material:** Steel, zinc-plated

**System:** 40 - Slot 8

**Type:** Fasteners



## General Data

Designation	System	Weight (g)
<b>SZ7000N</b>	40 - Slot 8	4.7

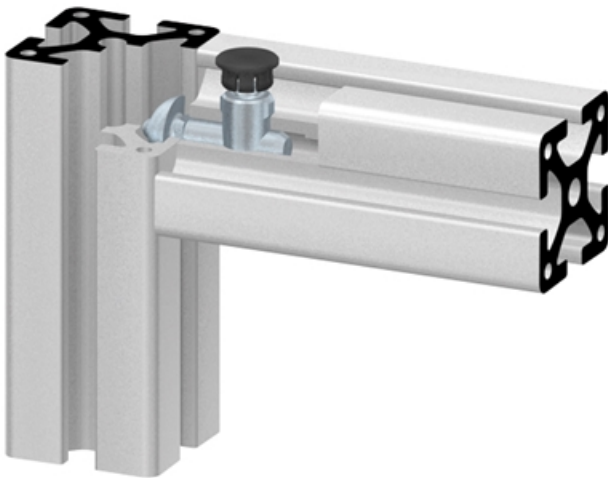
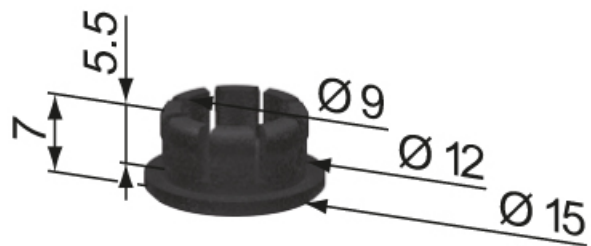
## Profile Cap for SV drillings

### Application:

For covering profile drillings that occur by assembling SV fasteners.

**System:** 40 - Slot 8

**Type:** Fasteners; Caps



## General Data

Designation	Description	System
SZ0099S	Profile Cap for SV drillings	40 - Slot 8

## T-Nuts, push-in

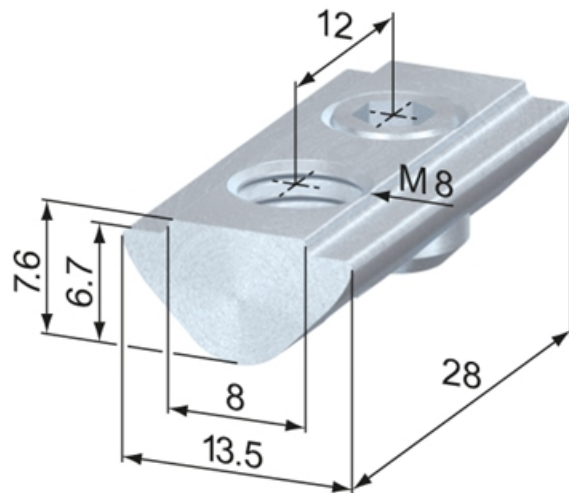
### Application:

T-nut for swiveling into the t-slot. Fits into the t-slot at any point. Held in position by a grub screw. Raised area fits into the t-slot to stop twisting.

**Material:** Steel, zinc-plated

**System:** 40 - Slot 8

**Type:** T-nuts



T-Nuts, slide-in



T-Nuts, push-in



### T-Slot Strength

Information in regards to the maximum allowable t-slot load capability F. These values already include a safety factor ( $S > 2$ ) against plastic deformation.

Profile type	Max. pull charge F
standard	5000 N
double br.	3250 N
semi	2500 N
light	2000 N
superlight	1750 N





## General Data

Designation	System	Thread	Weight (g)
SV2150V	40 - Slot 8	M5	14
SV2151V	40 - Slot 8	M6	14
SV2152V	40 - Slot 8	M8	12

## T-Nuts, slide-in

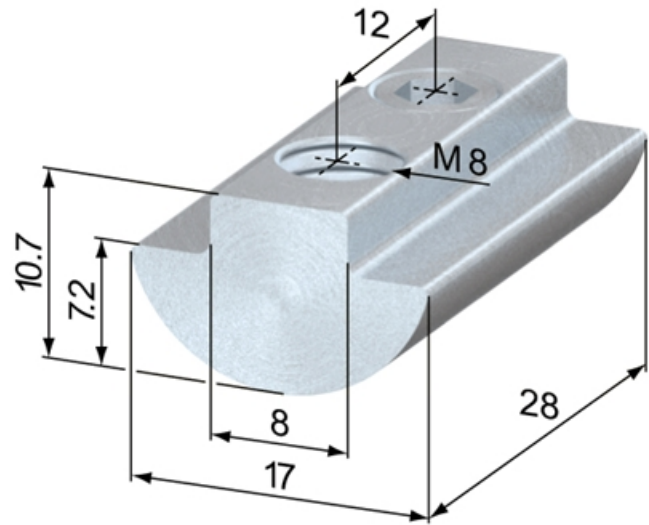
### Application:

Slides in the t-slot from the end of the profile and is locked into position by a grub screw. The wide supporting surface of the t-nut makes it suitable for higher fastening forces.

**Material:** Steel, zinc-plated

**System:** 40 - Slot 8

**Type:** T-nuts



T-Nuts, slide-in



T-Nuts, push-in



### T-Slot Strength

Information in regards to the maximum allowable t-slot load capability F. These values already include a safety factor ( $S > 2$ ) against plastic deformation.

Profile type	Max. pull charge F
standard	5000 N
double br.	3250 N
semi	2500 N
light	2000 N
superlight	1750 N



## General Data

Designation	System	Thread	Weight (g)
SV2050V	40 - Slot 8	M5	26
SV2052V	40 - Slot 8	M8	21

## T-Nuts, steel / plastic

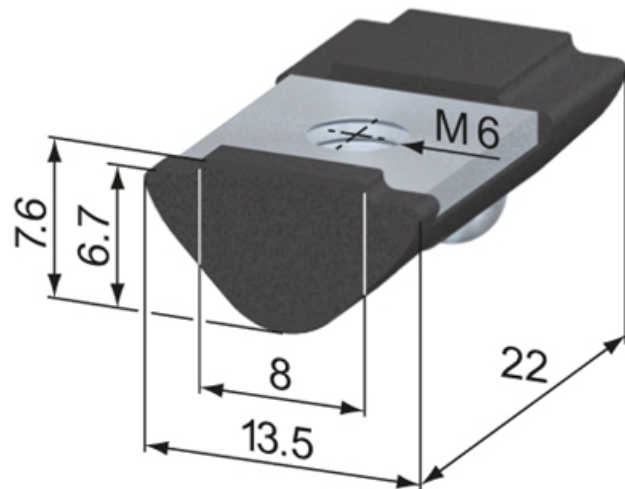
### Application:

T-nut for swiveling into the t-slot. Fits into the t-slot at any point. Held in position by a spring-loaded ball. Raised area fits into groove to stop twisting.

**Material:** Plastic t-nut with steel insert

**System:** 40 - Slot 8

**Type:** T-nuts



T-Nuts, slide-in



T-Nuts, push-in



### T-Slot Strength

Information in regards to the maximum allowable t-slot load capability F. These values already include a safety factor ( $S > 2$ ) against plastic deformation.

Profile type	Max. pull charge F
standard	5000 N
double br.	3250 N
semi	2500 N
light	2000 N
superlight	1750 N



## General Data

Designation	System	Thread	Weight (g)
SV2147S	40 - Slot 8	M5	4

## T-Nut Profile, slide-in

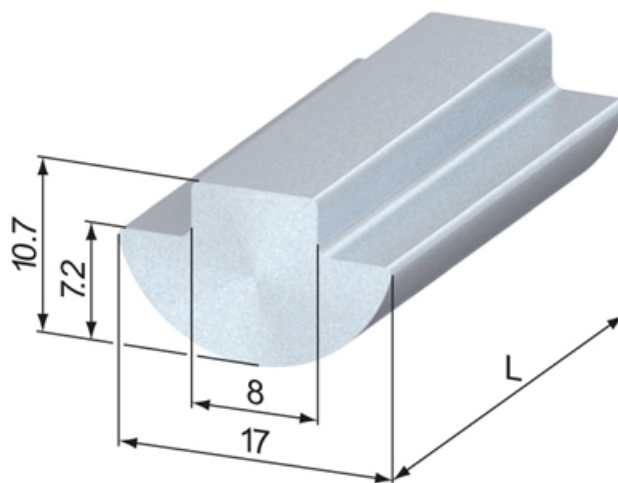
Application:

For manufacturing t-nuts, maximum tapping size M8.

**Material:** Steel, blank

**System:** 40 - Slot 8

**Type:** T-nuts



T-Nuts, slide-in



T-Nuts, push-in



### T-Slot Strength

Information in regards to the maximum allowable t-slot load capability F. These values already include a safety factor ( $S > 2$ ) against plastic deformation.

Profile type	Max. pull charge F
standard	5000 N
double br.	3250 N
semi	2500 N
light	2000 N
superlight	1750 N



## General Data

Designation	System	Weight (g)
SV2570V	40 - Slot 8	2880

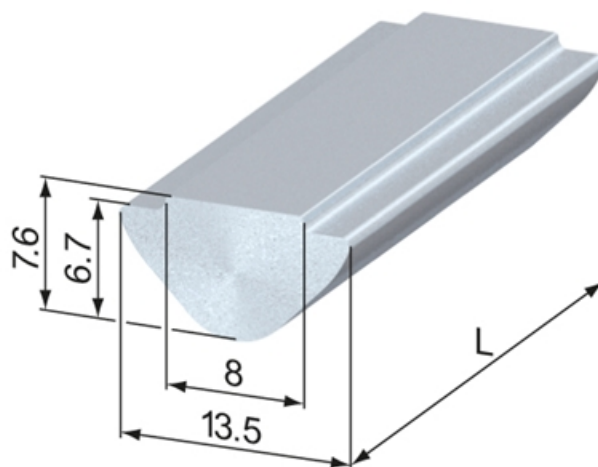
## T-Nut Profile, push-in

Application:

For manufacturing t-nuts, maximum tapping size M8.

**System:** 40 - Slot 8

**Type:** T-nuts



T-Nuts, slide-in



T-Nuts, push-in



### T-Slot Strength

Information in regards to the maximum allowable t-slot load capability F. These values already include a safety factor ( $S > 2$ ) against plastic deformation.

Profile type	Max. pull charge F
standard	5000 N
double br.	3250 N
semi	2500 N
light	2000 N
superlight	1750 N





## General Data

Designation	System	Material	Weight (g)	Length
<b>SV2560V</b>	40 - Slot 8	Steel, zinc-plated	1605	3000
<b>SV2575V</b>	40 - Slot 8	Stainless steel	1605	3000

## T-Nut Profile, aluminium, slide-in

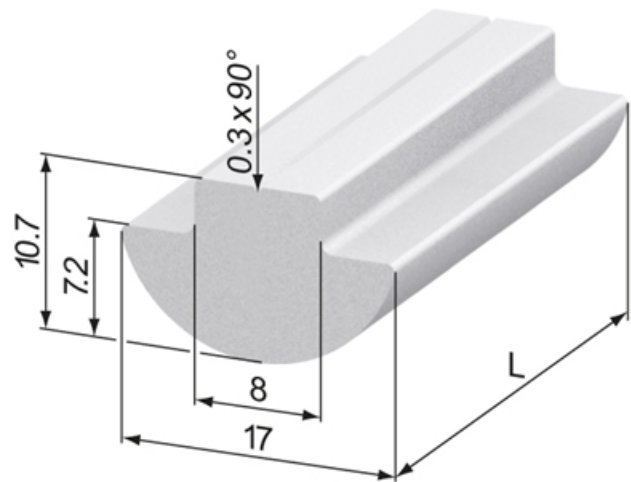
Application:

For manufacturing t-nuts, maximum tapping size M8.

**Material:** Aluminium, natural anodized

**System:** 40 - Slot 8

**Type:** T-nuts



T-Nuts, slide-in



T-Nuts, push-in



### T-Slot Strength

Information in regards to the maximum allowable t-slot load capability F. These values already include a safety factor ( $S > 2$ ) against plastic deformation.

Profile type	Max. pull charge F
standard	5000 N
double br.	3250 N
semi	2500 N
light	2000 N
superlight	1750 N



## General Data

Designation	System	Weight (g/m)
SV2570N	40 - Slot 8	332

## Double T-Nuts 40/20

### Application:

T-nut for swiveling into the groove. Fits into the t-slot at any point. For fixing of foot plates and any other accessories that require a fixing pitch of 40 mm x M8 (20 mm x M6 respectively) thread. Raised area fits into t-slot to stop twisting.

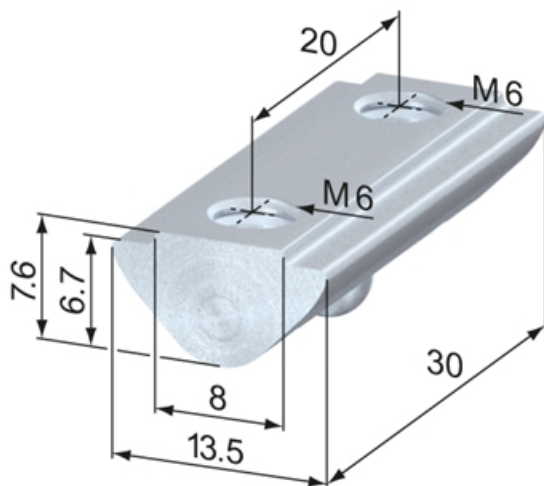
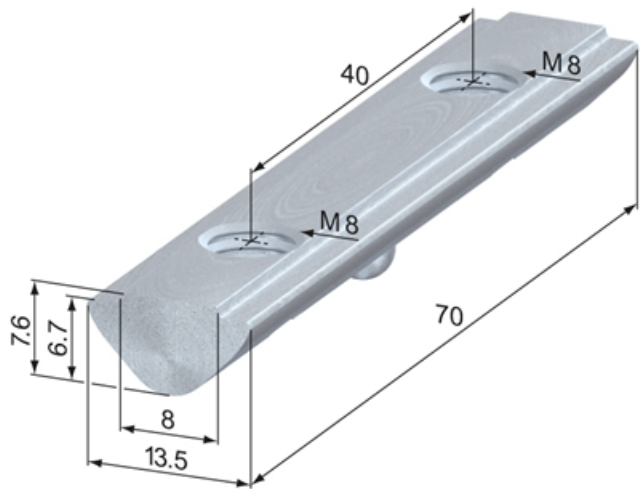
SV2202V: bore hole distance: 40 mm, thread: M8

SV2210V: bore hole distance: 20 mm, thread: M6

**Material:** Steel, zinc-plated

**System:** 40 - Slot 8

**Type:** T-nuts



T-Nuts, slide-in



T-Nuts, push-in



### T-Slot Strength

Information in regards to the maximum allowable t-slot load capability F. These values already include a safety factor ( $S > 2$ ) against plastic deformation.

Profile type	Max. pull charge F
standard	5000 N
double br.	3250 N
semi	2500 N
light	2000 N
superlight	1750 N



## General Data

Designation	System	Thread
SV2202V	40 - Slot 8	40 M8
SV2210V	40 - Slot 8	20 M6

## Special T-Nut

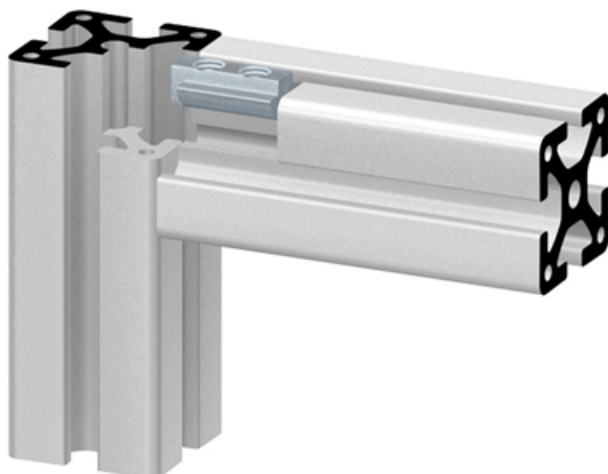
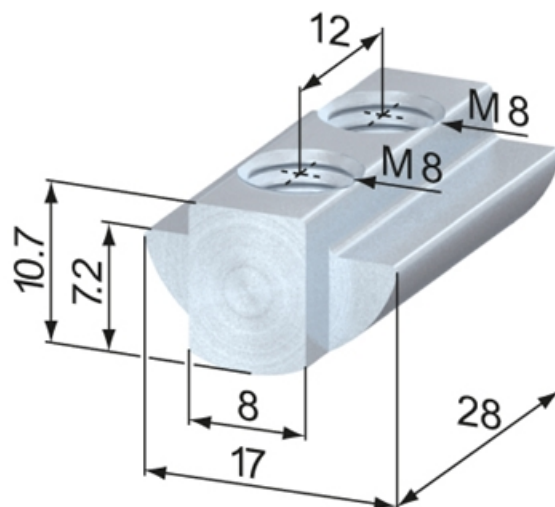
Application:

Provides anti-twist security used for heavy loads.

**Material:** Steel, zinc-plated

**System:** 40 - Slot 8

**Type:** T-nuts



T-Nuts, slide-in



T-Nuts, push-in



### T-Slot Strength

Information in regards to the maximum allowable t-slot load capability F. These values already include a safety factor ( $S > 2$ ) against plastic deformation.

Profile type	Max. pull charge F
standard	5000 N
double br.	3250 N
semi	2500 N
light	2000 N
superlight	1750 N



## General Data

Designation	System	Weight (g)
SV2060V	40 - Slot 8	21

## Panel Bracket

Fastens the surface element on the profile without further changes.

Tightening the clamping screw fastens the collet to both the surface element and the profile.

Do not use for grids or wave grids.

For 2-9 mm surface elements.

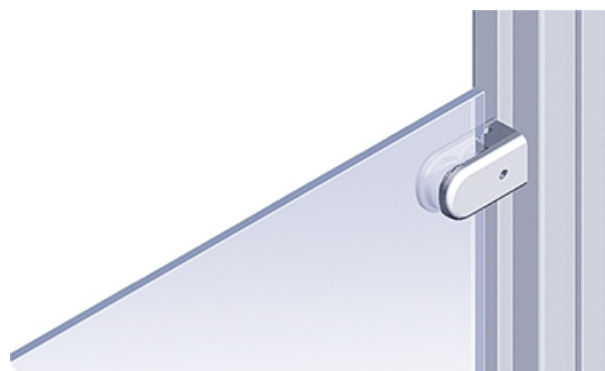
Material: Die-cast zinc, aluminium coloured powder coat

Set: 1 panel bracket, M5 × 16 screw,

5 rubber pads for 2–9 mm plates

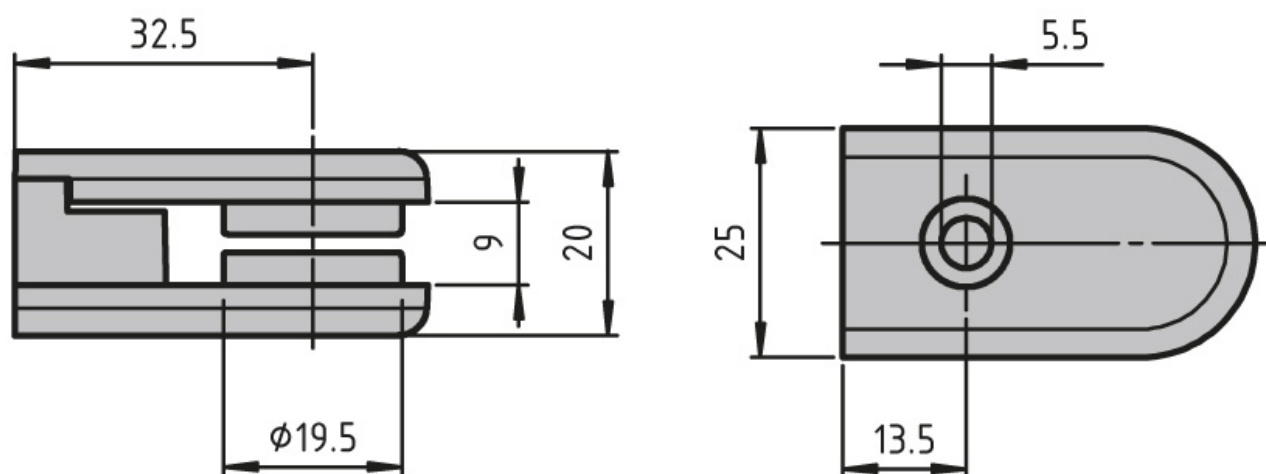
**System:** 40 - Slot 8; 30 - Slot 6; 20 - Slot 5

**Type:** Fixing Blocks/Fastening Elements





## General Data



Designation	Description
PZ5069	Panel bracket

## Earthing Strap

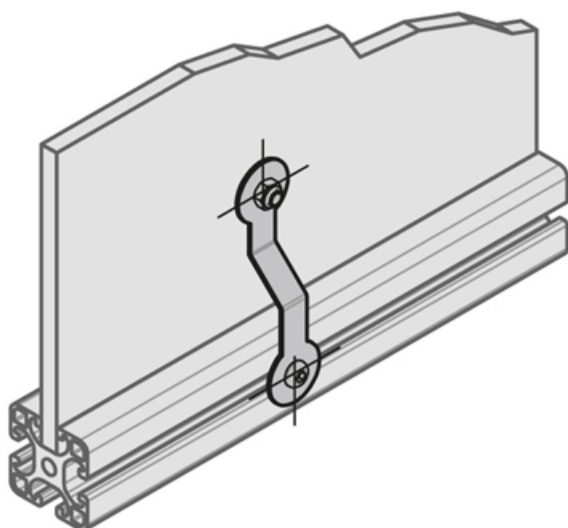
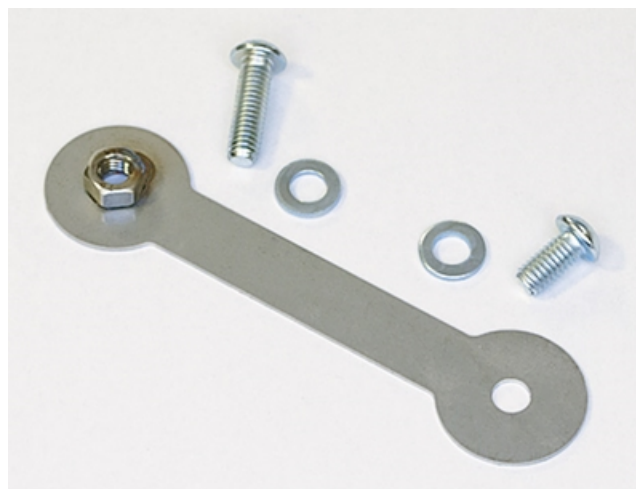
Creates a conductive link between surface elements and brace profiles.

Material: Stainless strip steel

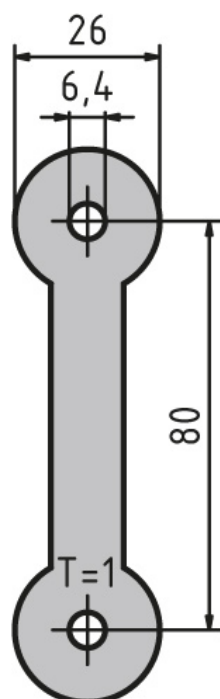
Package includes: 1× M6 × 20 fillister head screw (DIN7380), galvanised, 1× M6 × 12 fillister head screw (DIN7380), galvanised

**System:** 40 - Slot 8; 30 - Slot 6; 20 - Slot 5

**Type:** Fixing Blocks/Fastening Elements



## General Data



Designation	Description
PZ5070	Earthing strap with welded-on nut

## Angle 40 x 60

### Application:

For attaching and adjusting protection panels. Gap adjustment: 16 - 24 mm

### Supply:

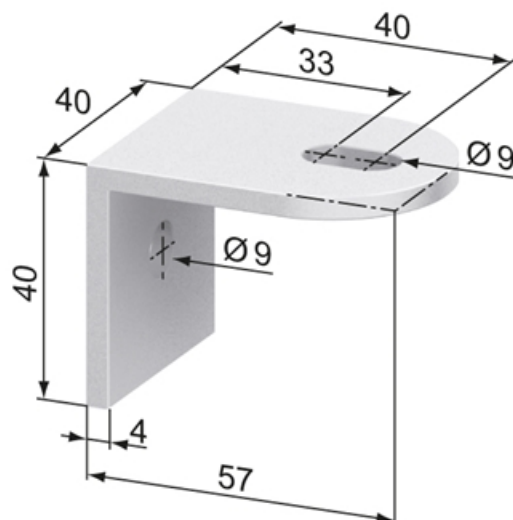
1 x attachment screw M8 / L24

1 x screw M8 x 20, DIN 7380, washer

**Material:** Aluminium, natural anodized

**System:** 40 - Slot 8

**Type:** Protection Wall Fastening Elements



## General Data

Designation	System	Weight (g)
SZ8000N	40 - Slot 8	31.5

## Angle 60 x 70

### Application:

Panel support angle with bolt for angular adjustment of panels.

### Supply:

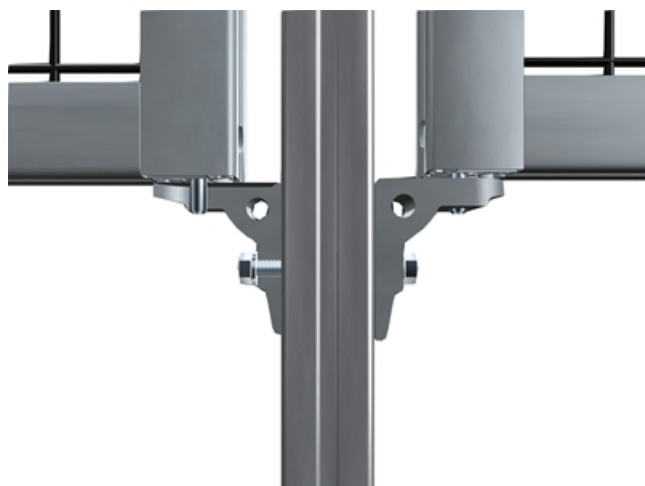
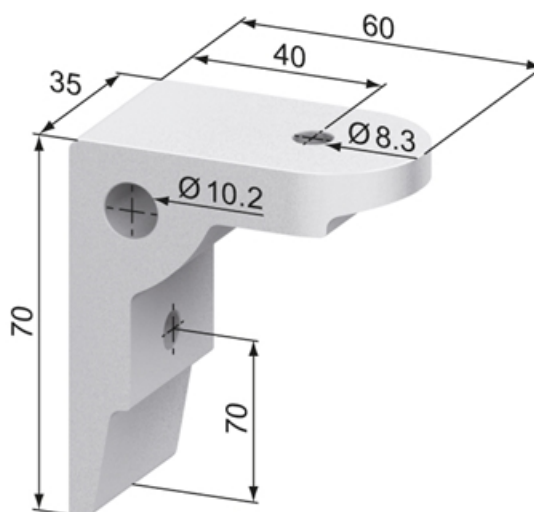
1 x SS2330V attachment screw M8 / L30

1 x SZ8005N bolt type G

**Material:** Aluminium, natural anodized

**System:** 40 - Slot 8

**Type:** Protection Wall Fastening Elements



## General Data

Designation	System	Weight (g)
SZ8001N	40 - Slot 8	113.5

## Bolt G-type

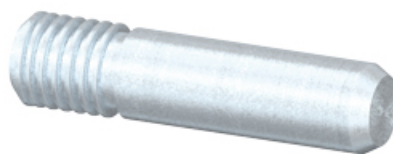
**Application:**

For the centering of protection panels. The bolt G-type gears with the angle 60 x 70.

**Material:** Steel, zinc-plated

**System:** 40 - Slot 8

**Type:** Protection Wall Fastening Elements





## General Data

Designation	System	Weight (g)
SZ8005N	40 - Slot 8	66.1