

## Foot Plates 80 x 200

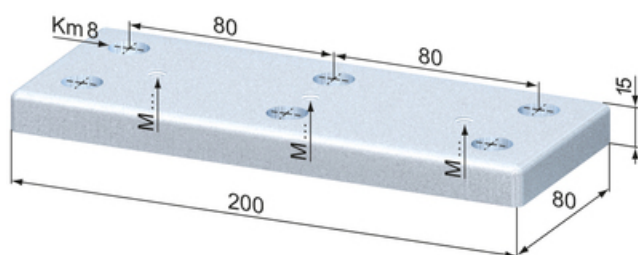
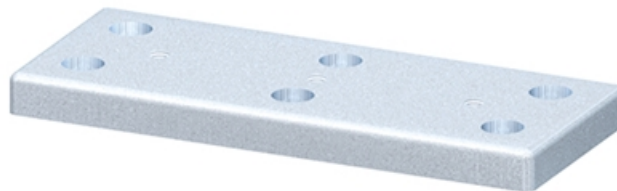
### Application:

Frontal screwing into profiles offers support of ring bolts, castors and adjustable feet.

**Material:** Steel, zinc-plated

**System:** 40 - Slot 8

**Type:** Foot Plates



## General Data

Designation	Description	System	Weight (kg)
<b>SZ0275V</b>	Foot Plate 80 x 200 M 8	40 - Slot 8	1.81
<b>SZ0276V</b>	Foot Plate 80 x 200 M 10	40 - Slot 8	1.8
<b>SZ0277V</b>	Foot Plate 80 x 200 M 12	40 - Slot 8	1.8
<b>SZ0278V</b>	Foot Plate 80 x 200 M 16	40 - Slot 8	1.77
<b>SZ0279V</b>	Foot Plate 80 x 200 M 20	40 - Slot 8	1.75