

## Central Fastener 40 SVL

### Application:

All-purpose universal fastener. The slide-in anchor is held in position in the profile groove by a spring-loaded ball in the opposing profile t-slot. The SV fasteners have an anti-twist feature.

### Assembly:

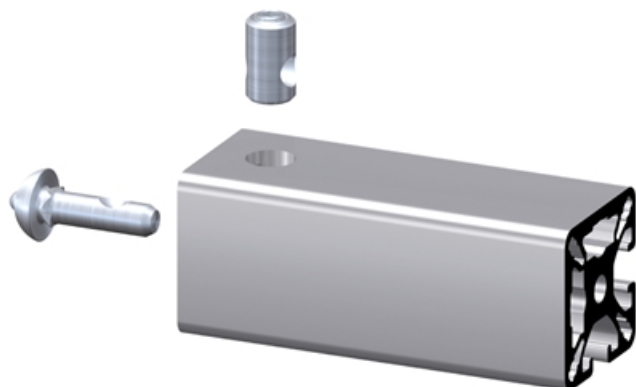
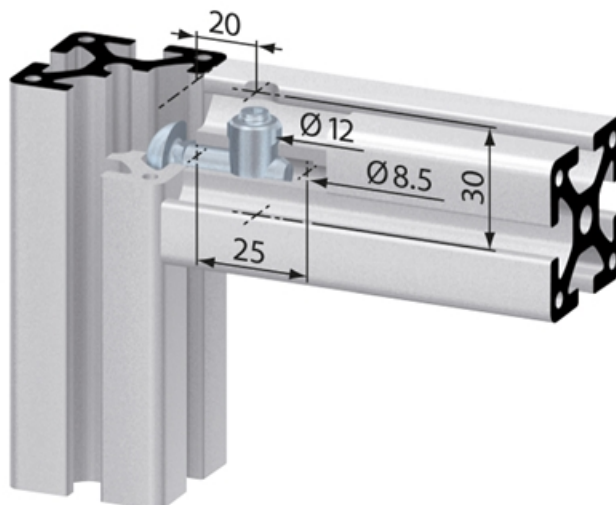
Bore hole for the barrel housing:  $\varnothing 12$  mm, 20 mm from profile end, 30 mm deep.

Bore for center hole on end of profile for anchor:  $\varnothing 8.5$  mm, 25 mm deep.

**Material:** Steel, zinc-plated

**System:** 40 - Slot 8

**Type:** Fasteners



## General Data

| Designation | Description            | System      | Weight (g) |
|-------------|------------------------|-------------|------------|
| SV1222V     | Central fastener SVL90 | 40 - Slot 8 | 31         |