

## Central Fastener 40 S / SV

### Application:

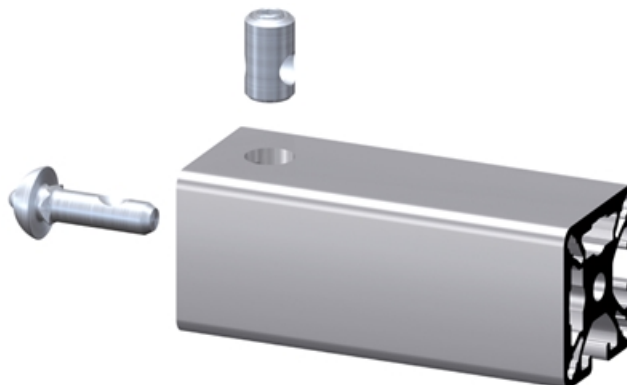
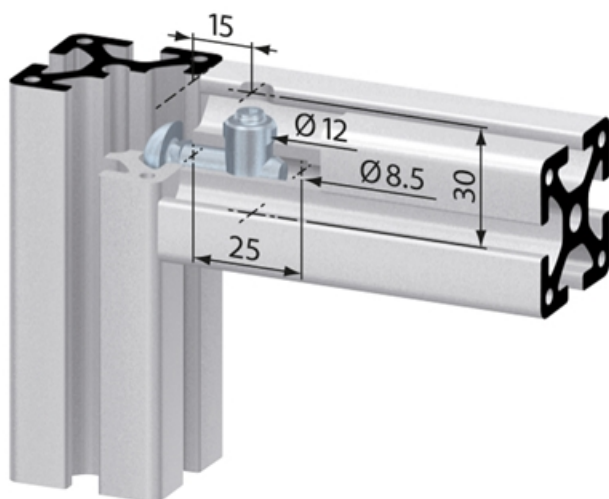
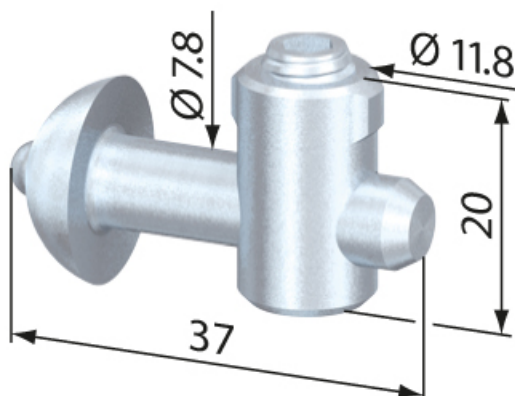
All-purpose universal fastener. The slide-in anchor is held in position in the profile groove by a spring-loaded ball in the opposing profile t-slot. The SV fasteners have an anti-twist feature. The SV ON fastener is to be used with closed profiles.

### Assembly:

Bore hole for the barrel housing:  $\varnothing 12$  mm, 15 mm from profile end, 30 mm deep. Bore for center hole on end of profile for anchor:  $\varnothing 8.5$  mm, 25 mm deep.

**System:** 40 - Slot 8

**Type:** Fasteners



## General Data

| Designation    | Description               | System      | Material           | Weight (g) |
|----------------|---------------------------|-------------|--------------------|------------|
| <b>SV1001V</b> | Central fastener 40 S     | 40 - Slot 8 | Steel, zinc-plated | 28         |
| <b>SV1211V</b> | Central fastener 40 SV    | 40 - Slot 8 | Steel, zinc-plated | 28         |
| <b>SV1212V</b> | Central fastener 40 SV ON | 40 - Slot 8 | Steel, zinc-plated | 27         |
| <b>SV1350V</b> | Central fastener 40 SV VA | 40 - Slot 8 | Stainless steel    | 30         |