

## NP planetary gearbox

Universally suitable gearbox from alpha Value Line with the best price-performance level. With LP+ B14 output geometry. Smooth or keyed output shaft. Optional available in High Torque execution for ratio 3:1 and 4:1 and products thereof for 2-stage gears. The stated maximal backlash is kept throughout the lifetime of the gearbox. Contact Rollco for CAD-files.

**Ratio:** 3-100

**Max. Torque (Nm):** 18 - 800

**Other models:** food-grade lubrication

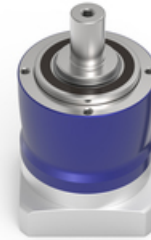
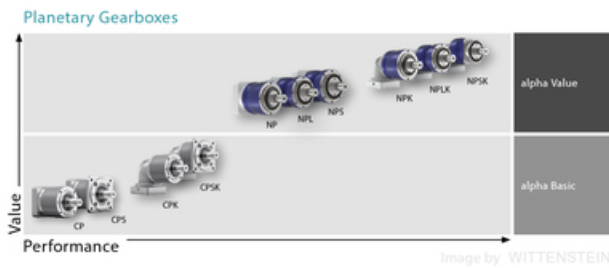


Image by WITTENSTEIN



## General Data

Designation	Ratio	Size
NP005	4 / 5 / 7 / 8 / 10 / 16 / 20 / 25 / 28 / 35 / 40 / 50 / 64 / 70 / 100	005
NP015	3 / 4 / 5 / 7 / 8 / 10 / 12 / 15 / 16 / 20 / 25 / 28 / 30 / 32 / 35 / 40 / 50 / 64 / 70 / 100 (Gearbox model Standard)	015
NP025	3 / 4 / 5 / 7 / 8 / 9 / 10 / 12 / 15 / 16 / 20 / 25 / 28 / 30 / 32 / 35 / 40 / 50 / 64 / 70 / 100 (Gearbox model Standard)	025
NP035	3 / 4 / 5 / 7 / 8 / 9 / 10 / 12 / 15 / 16 / 20 / 25 / 28 / 30 / 32 / 35 / 40 / 50 / 64 / 70 / 100 (Gearbox model Standard)	035
NP045	5 / 8 / 10 / 25 / 32 / 50 / 64 / 100	045