



## General Data

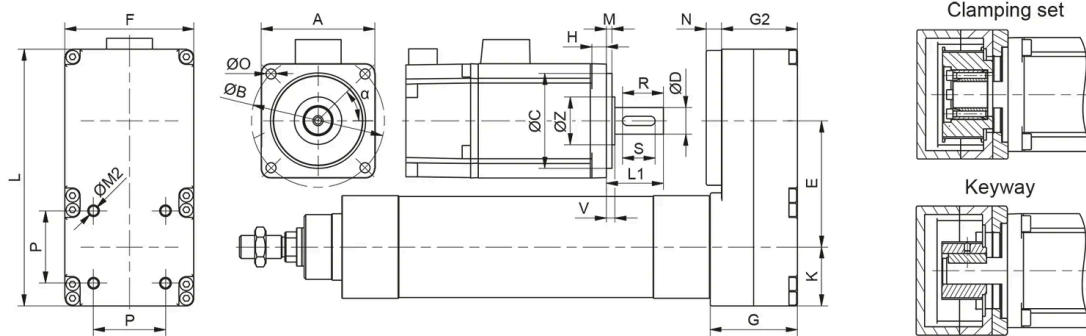
Designation	Compatible with	Type	Gear ratio (I)	Max. Drive Torque (Nm)	Max. Radial Load on Shaft (N)
MSD 32 - T0 - 1	PNCE 32	T0	1	1	40
MSD 32 - T1 - 1	PNCE 32	T1	1	1.4	40
MSD 32 - T1 - 1,5	PNCE 32	T1	1.5	0.9	40
MSD 40 - T1 - 1	PNCE 40	T1	1	3	80
MSD 40 - T1 - 1,5	PNCE 40	T1	1.5	2	80
MSD 40 - T2 - 1	PNCE 40	T2	1	4	80
MSD 40 - T2 - 1,5	PNCE 40	T2	1.5	2.6	80
MSD 50 - T1 - 1	PNCE 50	T1	1	9	170
MSD 50 - T1 - 1,5	PNCE 50	T1	1.5	6	170
MSD 50 - T2 - 1	PNCE 50	T2	1	9	205
MSD 50 - T2 - 2	PNCE 50	T2	2	4.5	205
MSD 63 - T1 - 1	PNCE 63	T1	1	21	500
MSD 63 - T1 - 2	PNCE 63	T1	2	8.9	400
MSD 80 - T1 - 1	PNCE 80	T1	1	24	500
MSD 80 - T1 - 2	PNCE 80	T1	2	10	400
MSD 80 - T2 - 1	PNCE 80	T2	1	48	500
MSD 80 - T2 - 2	PNCE 80	T2	2	24	500
MSD 100 - T1 - 1	PNCE 100	T1	1	110	1000
MSD 100 - T1 - 2	PNCE 100	T1	2	50	1000

Designation	No Load Torque (Nm)	Mass Moment of Inertia (10 <sup>-6</sup> kg m <sup>2</sup> )	Mass (kg)
MSD 32 - T0 - 1	0.03	4.6	0.5
MSD 32 - T1 - 1	0.1	53	0.85
MSD 32 - T1 - 1,5	0.07	31	0.72
MSD 40 - T1 - 1	0.1	62	0.92
MSD 40 - T1 - 1,5	0.07	44	0.79
MSD 40 - T2 - 1	0.27	288	1.66
MSD 40 - T2 - 1,5	0.18	200	1.39
MSD 50 - T1 - 1	0.27	363	1.76

## General Data

Designation	No Load Torque (Nm)	Mass Moment of Inertia (10 <sup>-6</sup> kg m <sup>2</sup> )	Mass (kg)
MSD 50 - T1 - 1,5	0.18	245	1.48
MSD 50 - T2 - 1	0.3	928	3.63
MSD 50 - T2 - 2	0.15	559	3.06
MSD 63 - T1 - 1	0.34	1041	3.72
MSD 63 - T1 - 2	0.17	616	3.1
MSD 80 - T1 - 1	0.34	1008	3.72
MSD 80 - T1 - 2	0.17	575	3.3
MSD 80 - T2 - 1	0.37	6000	9.3
MSD 80 - T2 - 2	0.18	4145	8.6
MSD 100 - T1 - 1	0.4	6181	9.4
MSD 100 - T1 - 2	0.2	4333	8.8

## Dimensions



Designation	B	E	F	G	G2	N	K	L	P
<b>MSD 32 - T0 - 1</b>	max 60	58.5 (±0.5)	52	39	33	6	26	113	32.5
<b>MSD 32 - T1 - 1</b>	max 80	65 (±0.5)	68	42	36	8	31	135	32.5
<b>MSD 32 - T1 - 1,5</b>	max 80	64.5 (±0.5)	68	42	36	8	31	135	32.5
<b>MSD 40 - T1 - 1</b>	max 80	65 (±0.5)	68	46	40	8	31	135	38
<b>MSD 40 - T1 - 1,5</b>	max 80	64.5 (±0.5)	68	46	40	8	31	135	38
<b>MSD 40 - T2 - 1</b>	max 110	82.5 (±0.5)	89	57	51	8	42	174	38
<b>MSD 40 - T2 - 1,5</b>	max 110	81.7 (±0.5)	89	57	51	8	42	174	38
<b>MSD 50 - T1 - 1</b>	max 110	82.5 (±0.5)	89	57	51	8	42	174	46.5
<b>MSD 50 - T1 - 1,5</b>	max 110	81.7 (±0.5)	89	57	51	8	42	174	46.5
<b>MSD 50 - T2 - 1</b>	max 140	120 (±0.5)	116	66	60	10	49.5	239	46.5
<b>MSD 50 - T2 - 2</b>	max 140	125.8 (±0.5)	116	66	60	10	49.5	239	46.5
<b>MSD 63 - T1 - 1</b>	max 140	120 (±0.5)	116	66	60	10	49.5	239	56.5
<b>MSD 63 - T1 - 2</b>	max 140	125.8 (±0.5)	116	66	60	10	49.5	239	56.5
<b>MSD 80 - T1 - 1</b>	max 140	120 (±0.5)	116	77	67	10	49.5	239	72
<b>MSD 80 - T1 - 2</b>	max 140	125.8 (±0.5)	116	77	67	10	49.5	239	72
<b>MSD 80 - T2 - 1</b>	max 195	155 (±0.5)	160	102	94	15	77	317	72
<b>MSD 80 - T2 - 2</b>	max 195	151.6 (±0.5)	160	102	94	15	77	317	72
<b>MSD 100 - T1 - 1</b>	max 195	155 (±0.5)	160	102	94	15	77	317	89
<b>MSD 100 - T1 - 2</b>	max 195	151.6 (±0.5)	160	102	94	15	77	317	89

Designation	M2	C	A	L1 Min. Clamping set	L1 Min. Keyway	L1 max.	ØD Min. Keyway	ØD Max. Keyway	ØD Max. Clamping set
<b>MSD 32 - T0 - 1</b>	Ø M6 × 8.5	max Ø 36	max 52	**	20	32	>8	12	8
<b>MSD 32 - T1 - 1</b>	Ø M6 × 8.5	max Ø 52	max 74	**	25	38	-	-	19

## Dimensions

Designation	M2	C	A	L1 Min. Clamping set	L1 Min. Keyway	L1 max.	ØD Min. Keyway	ØD Max. Keyway	ØD Max. Clamping set
<b>MSD 32 - T1 - 1,5</b>	Ø M6 × 8.5	max Ø 52	max 74	**	25	38	>10	14	10
<b>MSD 40 - T1 - 1</b>	Ø M6 × 8.5	max Ø 52	max 74	**	25	42	-	-	19
<b>MSD 40 - T1 - 1,5</b>	Ø M6 × 8.5	max Ø 52	max 74	**	25	42	>10	14	10
<b>MSD 40 - T2 - 1</b>	Ø M6 × 8.5	max Ø 75	max 95	**	30	52	-	-	28
<b>MSD 40 - T2 - 1,5</b>	Ø M6 × 8.5	max Ø 75	max 95	**	30	52	>16	24	16
<b>MSD 50 - T1 - 1</b>	Ø M8 × 9	max Ø 75	max 95	**	30	52	-	-	28
<b>MSD 50 - T1 - 1,5</b>	Ø M8 × 9	max Ø 75	max 95	**	30	52	>16	24	16
<b>MSD 50 - T2 - 1</b>	Ø M8 × 9	max Ø 100	max 122	**	35	62	-	-	35
<b>MSD 50 - T2 - 2</b>	Ø M8 × 9	max Ø 95	max 122	**	35	62	>15	22	15
<b>MSD 63 - T1 - 1</b>	Ø M8 × 10	max Ø 100	max 122	**	35	62	-	-	35
<b>MSD 63 - T1 - 2</b>	Ø M8 × 10	max Ø 95	max 122	**	35	62	>15	22	15
<b>MSD 80 - T1 - 1</b>	Ø M10 × 17	max Ø 100	max 122	**	35	68	-	-	35
<b>MSD 80 - T1 - 2</b>	Ø M10 × 17	max Ø 95	max 122	**	35	68	>15	22	15
<b>MSD 80 - T2 - 1</b>	Ø M10 × 17	max Ø 145	max 160	**	45	99	-	-	40
<b>MSD 80 - T2 - 2</b>	Ø M10 × 17	max Ø 130	max 160	**	45	99	>25.4	38	25.4
<b>MSD 100 - T1 - 1</b>	Ø M10 × 17	max Ø 145	max 160	**	45	99	-	-	40
<b>MSD 100 - T1 - 2</b>	Ø M10 × 17	max Ø 130	max 160	**	45	99	>25.4	38	25.4