

## TR---.0300

- Lubricated for lifetime

Use profile UP---.0700

Fixing square element BQ---.1000

Rectangular fixing element BR---.1100

Note! System Load Capacity refers to capacity of both rail and bearing. Dynamic Load Capacity refers to bearing.

Dimensions in mm.

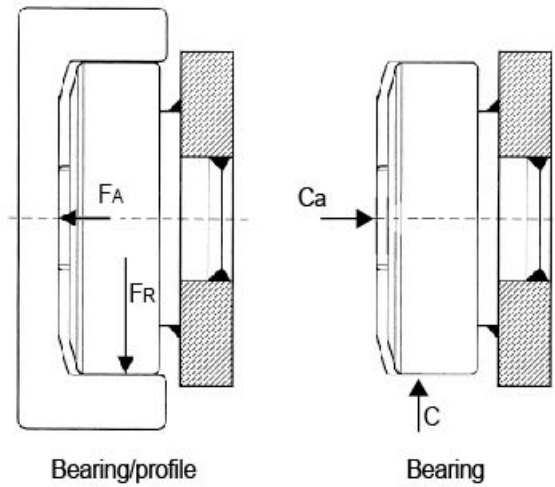
**Roller Type:** Standard

**Sizes Available:** 60; 70; 80; 90; 110; 120; 150



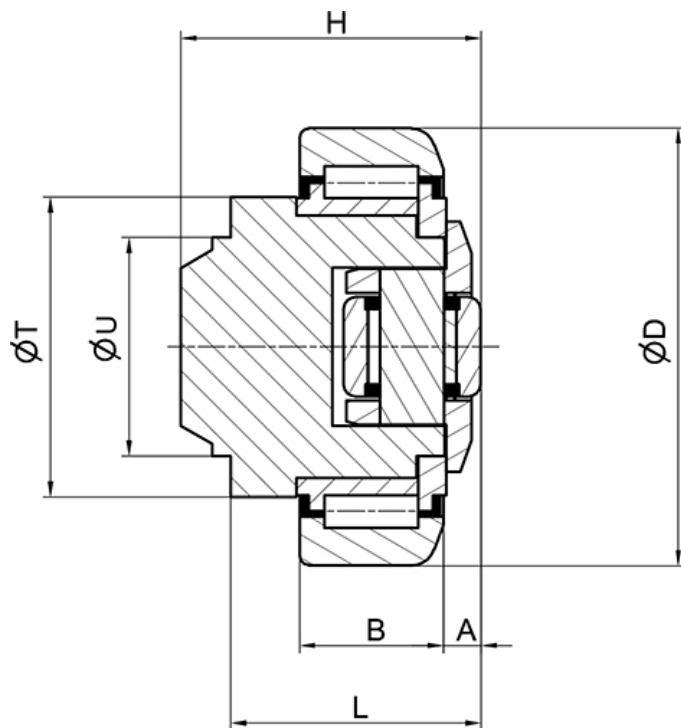
## General Data

FA = System Load Capacity Axial  
 FR = System Load Capacity Radial  
 Ca = Dynamic Load Capacity Axial  
 C = Dynamic Load Capacity Radial



Designation	System Load Capacity Radial (N)	System Load Capacity Axial (N)	Dynamic Load Capacity Axial (N)	Dynamic Load Capacity Radial (N)	Profile
TR060.0300	8870	2950	8000	31000	UP---.0700
TR070.0300	11400	3150	13000	45500	UP---.0700
TR080.0300	12870	5000	14000	48000	UP---.0700
TR090.0300	20370	5100	15000	68000	UP---.0700
TR110.0300	24060	8900	31000	81000	UP---.0700
TR120.0300	33440	9800	31000	110000	UP---.0700
TR150.0300	51940	17400	68000	151000	UP---.0700

## Dimensions



Designation	A	B	D	H	L	T	U
TR060.0300	5.5	20	62.5	43	33	42	30
TR070.0300	6.5	23	70.1	48	40	48	35
TR080.0300	7	23	77.7	50.5	39.5	54	40
TR090.0300	7	30	88.4	61	48	59	45
TR110.0300	8	31	107.7	69	55	71	60
TR120.0300	8	37	123	75.8	59.5	80	60
TR150.0300	15	45	149	89	69	103	60