

Table of contents

- **Wide Block Type LC**
- **Narrow Block Type SC**
- **Wide Block Type LL**
- **Narrow Block Type SL**
- **Rail RMG**
- **RA Grease**

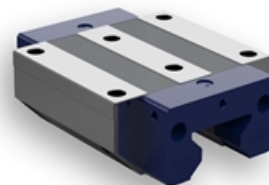
Wide Block Type LC

The Rollco Roller Guides are highly developed solutions for the high-tech industry.

The optimized shape of the rails, the roller guides with logarithmic profiles and the integrated lubrication system multiplies the economical as well as the technical advantages.

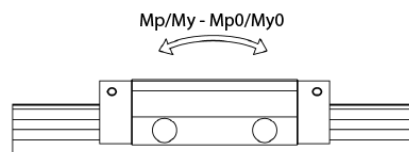
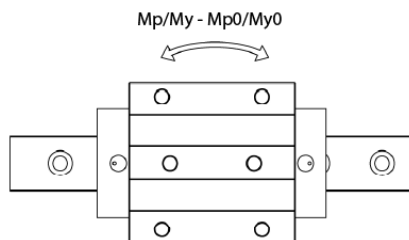
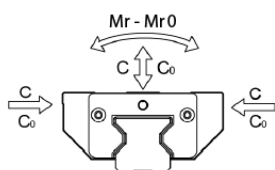
Dimensions in mm.

Lead times in the table below are only indications. Choice of preload and accuracy class will affect lead time. Please contact us for exact delivery time for your request.



General Data

LC

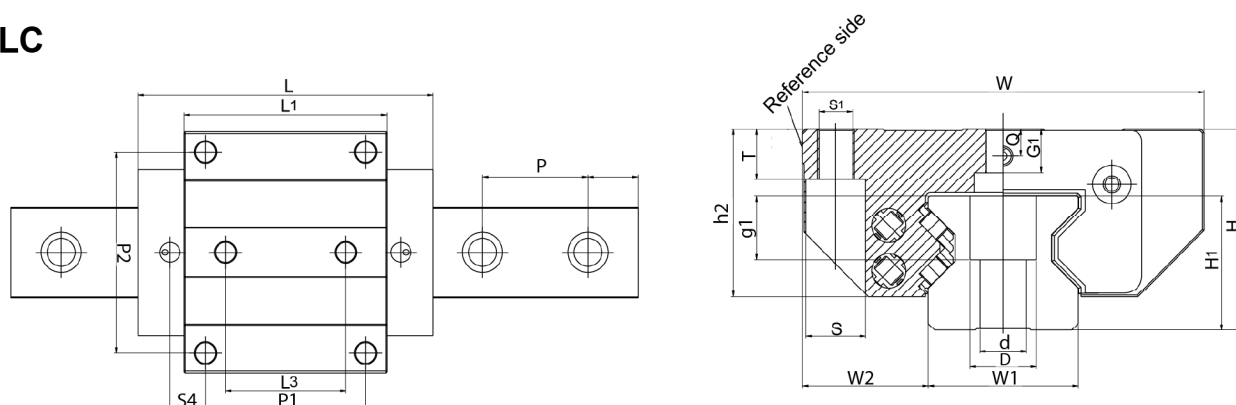


| Designation | Dynamic Load Capacity C (N) | Static Load Capacity C0 (N) | Static Moment Mr0 (Nm) | Static Moment Mp0 (Nm) | Static Moment My0 (Nm) |
|-------------|-----------------------------|-----------------------------|------------------------|------------------------|------------------------|
| RMG25LC | 28700 | 57600 | 863 | 570 | 570 |
| RMG35LC | 53300 | 99000 | 2192 | 1235 | 1235 |
| RMG45LC | 95000 | 184000 | 5070 | 2979 | 2979 |
| RMG55LC | 132600 | 256000 | 8707 | 4981 | 4981 |
| RMG65LC | 212000 | 414000 | 15780 | 10140 | 10140 |

| Designation | Dynamic Moment Mr (Nm) | Dynamic Moment Mp (Nm) | Dynamic Moment My (Nm) |
|-------------|------------------------|------------------------|------------------------|
| RMG25LC | 431 | 285 | 285 |
| RMG35LC | 1179 | 674 | 674 |
| RMG45LC | 2617 | 1538 | 1538 |
| RMG55LC | 4503 | 2576 | 2576 |
| RMG65LC | 8100 | 5210 | 5210 |

Dimensions

LC



| Designation | L | H | W | L1 | L3 | H1 | h2 | W1 | W2 |
|-------------|-------|----|-----|-------|----|------|------|----|------|
| RMG25LC | 90.2 | 36 | 70 | 62 | 40 | 24.5 | 29.5 | 23 | 23.5 |
| RMG35LC | 119.3 | 48 | 100 | 80 | 52 | 32 | 41 | 34 | 33 |
| RMG45LC | 147.3 | 60 | 120 | 101.3 | 60 | 40 | 50 | 45 | 37.5 |
| RMG55LC | 173 | 70 | 140 | 120 | 70 | 48 | 57 | 53 | 43.5 |
| RMG65LC | 221.8 | 90 | 170 | 159.8 | 82 | 55 | 78 | 63 | 53.5 |

| Designation | S1 | S4 | P | Q | S | T | D x d x g1 | G1 | Hole Pitch (P) | P1 |
|-------------|-----|------|------|-----|-----|----|---------------|------|----------------|-----|
| RMG25LC | M8 | 14 | - | 5.5 | M6 | 9 | 11 x 7 x 11.5 | 6.5 | 30 | 45 |
| RMG35LC | M10 | 15.5 | 40 | 7.9 | M8 | 12 | 15 x 9 x 17 | 10 | - | 62 |
| RMG45LC | M12 | 17.6 | 52.5 | 8 | M10 | 15 | 20 x 14 x 19 | 12 | - | 80 |
| RMG55LC | M14 | 21.5 | 60 | 9 | M12 | 18 | 24 x 16 x 22 | 13.5 | - | 95 |
| RMG65LC | M16 | 29 | 75 | 15 | M14 | 22 | 26 x 18 x 26 | 19.5 | - | 110 |

| Designation | P2 |
|-------------|-----|
| RMG25LC | 57 |
| RMG35LC | 82 |
| RMG45LC | 100 |
| RMG55LC | 116 |
| RMG65LC | 142 |

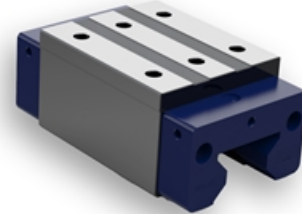
Narrow Block Type SC

The Rollco Roller Guides are highly developed solutions for the high-tech industry.

The optimized shape of the rails, the roller guides with logarithmic profiles and the integrated lubrication system multiplies the economical as well as the technical advantages.

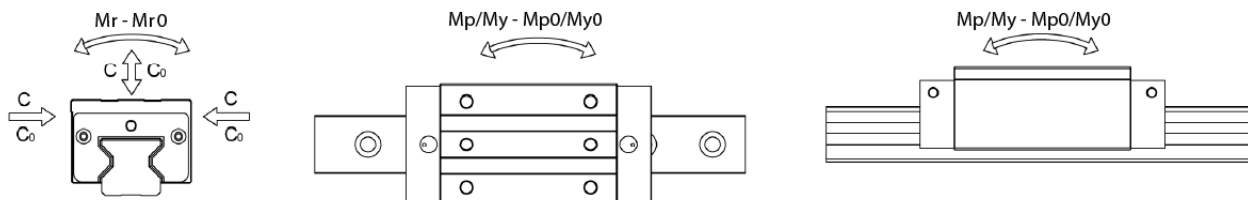
Dimensions in mm.

Lead times in the table below are only indications. Choice of preload and accuracy class will affect lead time. Please contact us for exact delivery time for your request.



General Data

SC

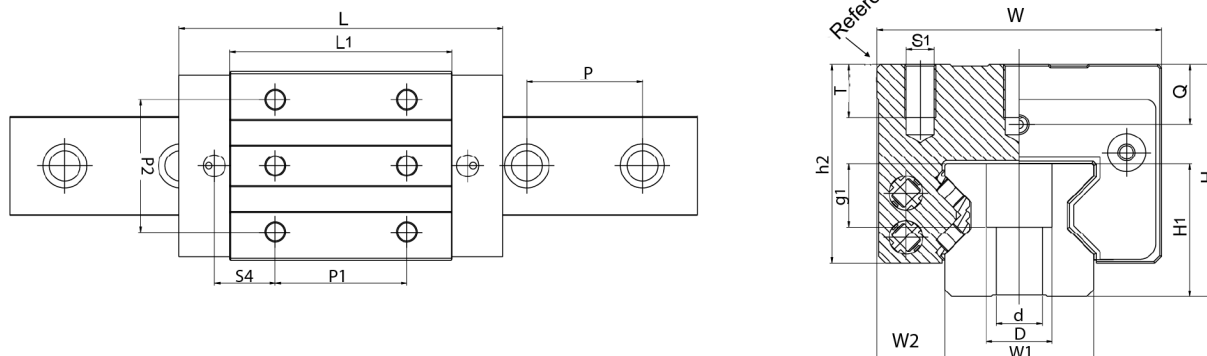


| Designation | Dynamic Load Capacity C (N) | Static Load Capacity C0 (N) | Static Moment Mr0 (Nm) | Static Moment Mp0 (Nm) | Static Moment My0 (Nm) |
|----------------|-----------------------------|-----------------------------|------------------------|------------------------|------------------------|
| RMG25SC | 28700 | 57600 | 863 | 570 | 570 |
| RMG35SC | 53300 | 99000 | 2192 | 1235 | 1235 |
| RMG45SC | 95000 | 184000 | 5070 | 2979 | 2979 |
| RMG55SC | 132600 | 256000 | 8707 | 4981 | 4981 |
| RMG65SC | 212000 | 414000 | 15780 | 10140 | 10140 |

| Designation | Dynamic Moment Mr (Nm) | Dynamic Moment Mp (Nm) | Dynamic Moment My (Nm) |
|----------------|------------------------|------------------------|------------------------|
| RMG25SC | 431 | 285 | 285 |
| RMG35SC | 1179 | 674 | 674 |
| RMG45SC | 2617 | 1538 | 1538 |
| RMG55SC | 4503 | 2576 | 2576 |
| RMG65SC | 8100 | 5210 | 5210 |

Dimensions

SC



| Designation | L | H | W | L1 | H1 | h2 | W1 | W2 | S1 |
|-------------|-------|----|-----|-------|------|------|----|------|-----|
| RMG25SC | 90.2 | 40 | 48 | 62 | 24.5 | 33.5 | 23 | 12.5 | M6 |
| RMG35SC | 119.3 | 55 | 70 | 80 | 32 | 48 | 34 | 18 | M8 |
| RMG45SC | 147.3 | 70 | 86 | 101.3 | 40 | 60 | 45 | 20.5 | M10 |
| RMG55SC | 173 | 80 | 100 | 120 | 48 | 67 | 53 | 23.5 | M12 |
| RMG65SC | 221.8 | 90 | 126 | 159.8 | 55 | 78 | 63 | 31.5 | M16 |

| Designation | S4 | P | Q | T | D x d x g1 | Hole Pitch (P) | P1 | P2 |
|-------------|------|------|------|----|---------------|----------------|----|----|
| RMG25SC | 19 | - | 9.5 | 9 | 11 x 7 x 11.5 | 30 | 35 | 35 |
| RMG35SC | 21.5 | 40 | 14.9 | 12 | 15 x 9 x 17 | - | 50 | 50 |
| RMG45SC | 27.6 | 52.5 | 18 | 18 | 20 x 14 x 19 | - | 60 | 60 |
| RMG55SC | 31.5 | 60 | 19 | 19 | 24 x 16 x 22 | - | 75 | 75 |
| RMG65SC | 49 | 75 | 15 | 22 | 26 x 18 x 26 | - | 70 | 76 |

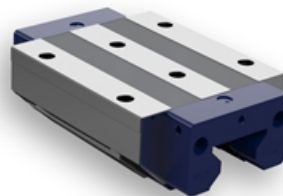
Wide Block Type LL

The Rollco Roller Guides are highly developed solutions for the high-tech industry.

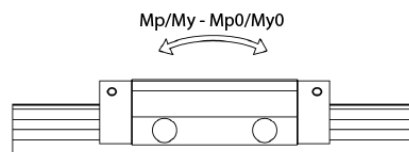
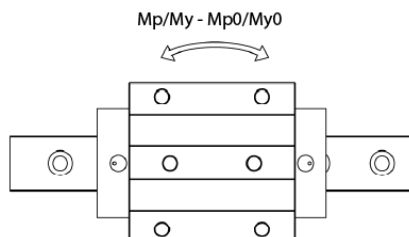
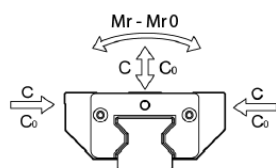
The optimized shape of the rails, the roller guides with logarithmic profiles and the integrated lubrication system multiplies the economical as well as the technical advantages.

Dimensions in mm.

Lead times in the table below are only indications. Choice of preload and accuracy class will affect lead time. Please contact us for exact delivery time for your request.



General Data

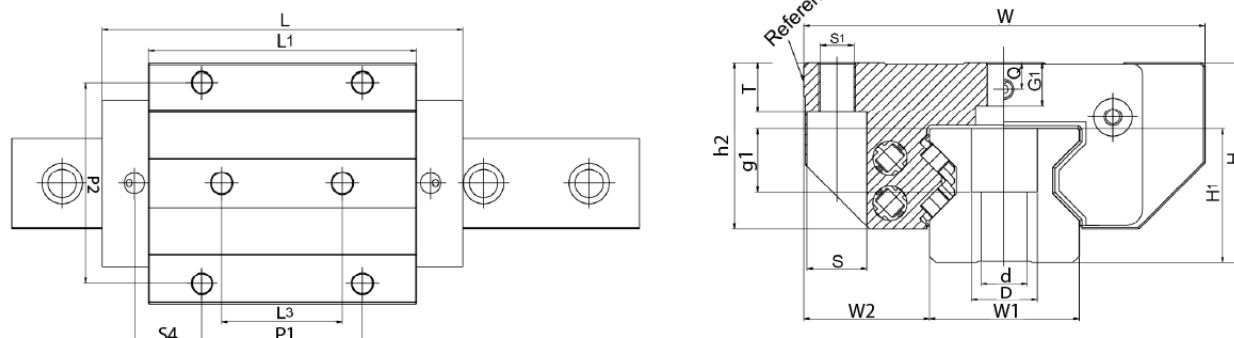
LL


| Designation | Dynamic Load Capacity C (N) | Static Load Capacity C0 (N) | Static Moment Mr0 (Nm) | Static Moment Mp0 (Nm) | Static Moment My0 (Nm) |
|----------------|-----------------------------|-----------------------------|------------------------|------------------------|------------------------|
| RMG25LL | 38900 | 76800 | 1150 | 970 | 970 |
| RMG35LL | 72600 | 136000 | 3014 | 2243 | 2243 |
| RMG45LL | 119500 | 242200 | 6672 | 4951 | 4951 |
| RMG55LL | 176000 | 351000 | 11915 | 8910 | 8910 |
| RMG65LL | 276000 | 579000 | 22100 | 11840 | 11840 |

| Designation | Dynamic Moment Mr (Nm) | Dynamic Moment Mp (Nm) | Dynamic Moment My (Nm) |
|----------------|------------------------|------------------------|------------------------|
| RMG25LL | 583 | 491 | 491 |
| RMG35LL | 1595 | 1187 | 1187 |
| RMG45LL | 3293 | 2444 | 2444 |
| RMG55LL | 5977 | 4470 | 4470 |
| RMG65LL | 10530 | 8980 | 8980 |

Dimensions

LL



| Designation | L | H | W | L1 | L3 | H1 | h2 | W1 | W2 |
|-------------|-------|----|-----|-------|----|------|------|----|------|
| RMG25LL | 109.7 | 36 | 70 | 81.5 | 40 | 24.5 | 29.5 | 23 | 23.5 |
| RMG35LL | 142.3 | 48 | 100 | 103 | 52 | 32 | 41 | 34 | 33 |
| RMG45LL | 179.8 | 60 | 120 | 133.8 | 60 | 40 | 50 | 45 | 37.5 |
| RMG55LL | 215 | 70 | 140 | 162 | 70 | 48 | 57 | 53 | 43.5 |
| RMG65LL | 272.3 | 90 | 170 | 210.3 | 82 | 55 | 78 | 63 | 53.5 |

| Designation | S1 | S4 | P | Q | S | T | D x d x g1 | G1 | Hole Pitch (P) | P1 |
|-------------|-----|------|------|-----|-----|----|---------------|------|----------------|-----|
| RMG25LL | M8 | 23.7 | - | 5.5 | M6 | 9 | 11 x 7 x 11.5 | 6.5 | 30 | 45 |
| RMG35LL | M10 | 27 | 40 | 7.9 | M8 | 12 | 15 x 9 x 17 | 10 | - | 62 |
| RMG45LL | M12 | 33.9 | 52.5 | 8 | M10 | 15 | 20 x 14 x 19 | 12 | - | 80 |
| RMG55LL | M14 | 42 | 60 | 9 | M12 | 18 | 24 x 16 x 22 | 13.5 | - | 95 |
| RMG65LL | M16 | 54.3 | 75 | 15 | M14 | 22 | 26 x 18 x 26 | 19.5 | - | 110 |

| Designation | P2 |
|-------------|-----|
| RMG25LL | 57 |
| RMG35LL | 82 |
| RMG45LL | 100 |
| RMG55LL | 116 |
| RMG65LL | 142 |

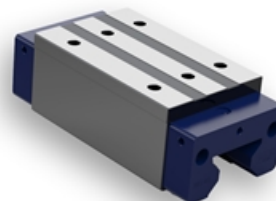
Narrow Block Type SL

The Rollco Roller Guides are highly developed solutions for the high-tech industry.

The optimized shape of the rails, the roller guides with logarithmic profiles and the integrated lubrication system multiplies the economical as well as the technical advantages.

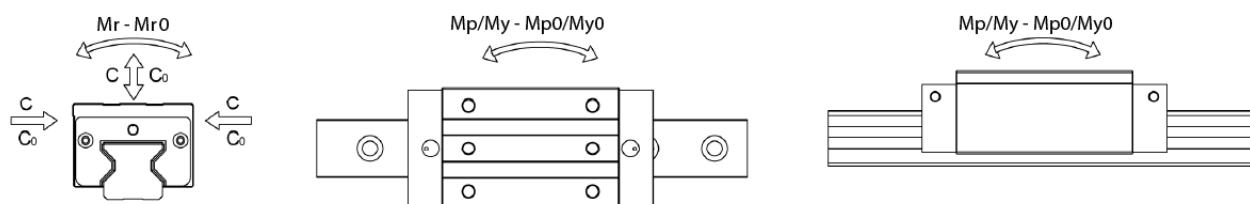
Dimensions in mm.

Lead times in the table below are only indications. Choice of preload and accuracy class will affect lead time. Please contact us for exact delivery time for your request.



General Data

SL

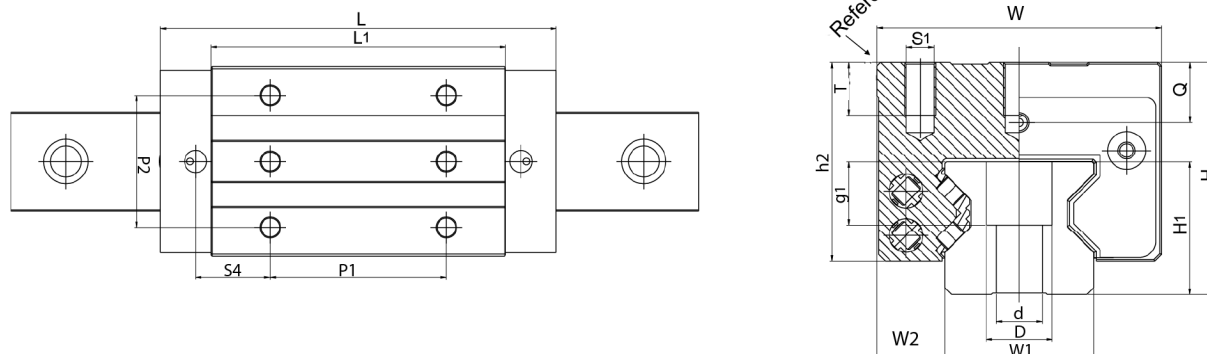


| Designation | Dynamic Load Capacity C (N) | Static Load Capacity C0 (N) | Static Moment Mr0 (Nm) | Static Moment Mp0 (Nm) | Static Moment My0 (Nm) |
|----------------|-----------------------------|-----------------------------|------------------------|------------------------|------------------------|
| RMG25SL | 38900 | 76800 | 1150 | 970 | 970 |
| RMG35SL | 72600 | 136000 | 3014 | 2243 | 2243 |
| RMG45SL | 119500 | 242200 | 6672 | 4951 | 4951 |
| RMG55SL | 176000 | 351000 | 11915 | 8910 | 8910 |
| RMG65SL | 276000 | 579000 | 22100 | 11840 | 11840 |

| Designation | Dynamic Moment Mr (Nm) | Dynamic Moment Mp (Nm) | Dynamic Moment My (Nm) |
|----------------|------------------------|------------------------|------------------------|
| RMG25SL | 583 | 491 | 491 |
| RMG35SL | 1595 | 1187 | 1187 |
| RMG45SL | 3293 | 2444 | 2444 |
| RMG55SL | 5977 | 4470 | 4470 |
| RMG65SL | 10530 | 8980 | 8980 |

Dimensions

SL



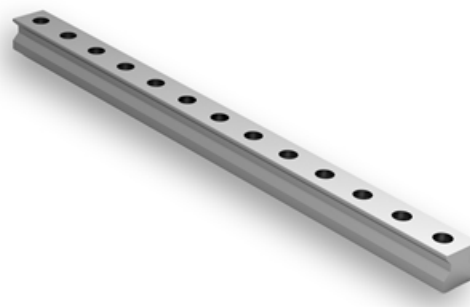
| Designation | L | H | W | L1 | H1 | h2 | W1 | W2 | S1 |
|-------------|-------|----|-----|-------|------|------|----|------|-----|
| RMG25SL | 109.7 | 40 | 48 | 81.5 | 24.5 | 33.5 | 23 | 12.5 | M6 |
| RMG35SL | 142.3 | 55 | 70 | 103 | 32 | 48 | 34 | 18 | M8 |
| RMG45SL | 179.8 | 70 | 86 | 133.8 | 40 | 60 | 45 | 20.5 | M10 |
| RMG55SL | 215 | 80 | 100 | 162 | 48 | 67 | 53 | 23.5 | M12 |
| RMG65SL | 272.3 | 90 | 126 | 210.3 | 55 | 78 | 63 | 31.5 | M16 |

| Designation | S4 | P | Q | T | D x d x g1 | Hole Pitch (P) | P1 | P2 |
|-------------|------|------|------|----|---------------|----------------|-----|----|
| RMG25SL | 21.2 | - | 9.5 | 9 | 11 x 7 x 11.5 | 30 | 50 | 35 |
| RMG35SL | 22 | 40 | 14.9 | 12 | 15 x 9 x 17 | - | 72 | 50 |
| RMG45SL | 33.9 | 52.5 | 18 | 18 | 20 x 14 x 19 | - | 80 | 60 |
| RMG55SL | 42 | 60 | 19 | 19 | 24 x 16 x 22 | - | 95 | 75 |
| RMG65SL | 49.2 | 75 | 15 | 22 | 26 x 18 x 26 | - | 120 | 76 |

Rail RMG

The Rollco Roller Guides are highly developed solutions for the high-tech industry. The optimized shape of the rails, the roller guides with logarithmic profiles and the integrated lubrication system multiplies the economical as well as the technical advantages.

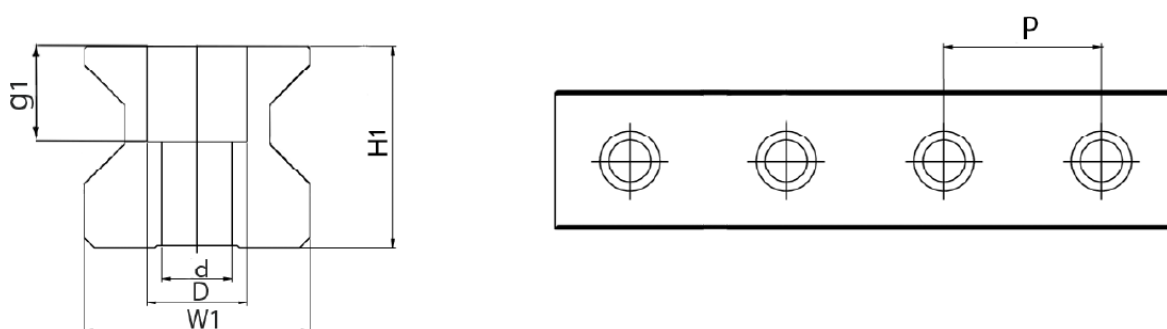
Dimensions in mm



General Data

| Designation | Weight (kg/m) |
|-------------|---------------|
| RMG25 | 3.4 |
| RMG35 | 6.5 |
| RMG45 | 10.7 |
| RMG55 | 15.2 |
| RMG65 | 22.5 |

Dimensions



| Designation | H1 | W1 | D x d x g1 | Hole Pitch (P) |
|--------------|------|----|---------------|----------------|
| RMG25 | 24.5 | 23 | 11 x 7 x 11.5 | 30 |
| RMG35 | 32 | 34 | 15 x 9 x 17 | 40 |
| RMG45 | 40 | 45 | 20 x 14 x 19 | 52.5 |
| RMG55 | 48 | 53 | 24 x 16 x 22 | 60 |
| RMG65 | 55 | 63 | 26 x 18 x 26 | 75 |

RA Grease

NLGI grade 1.5

Clear grease based on synthetic oils and PTFE. Will fulfil all severe specifications from bearing manufacturers, industrial applications and vehicle producers. Very suitable for use where long service life is required and desired. The specific rheological properties of the lubricant will give very low good flow properties of the grease at extremely low temperatures, at the same time the high film strength and thickness will guarantee lubrication also at elevated temperatures. The type of PTFE used will adhere strongly to all surfaces lubricated and give a very low friction coefficient. The grease is water resistant, withstands oxidation, has very good mechanical stability, is completely non-toxic and provides a very wide application temperature range.

Temperature: -40 to +260 °C (application range)



General Data

| Designation | Remark | Colour | Weight (g) |
|--------------------|-------------------|-------------------|------------|
| RA Grease NLGI 1.5 | Cartridge package | Translucent white | 400 g |