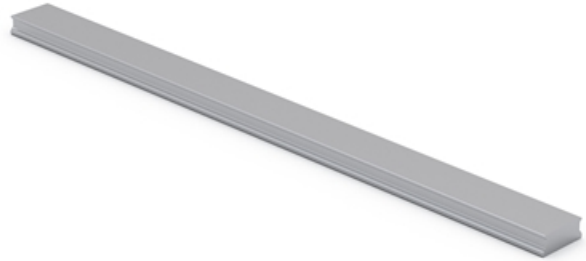


WRU Rail

Tapped from the bottom.
Cut to length acc. to request.
Rails can be joint together for extra long lengths.
Contact Rollco for more information.

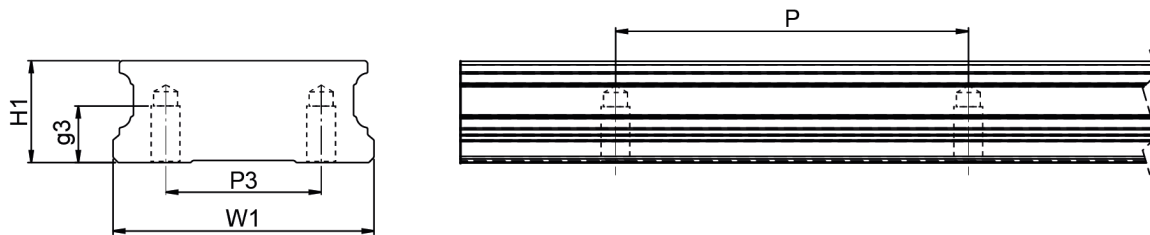
Dimensions in mm.



General Data

Designation	Weight Rail (g/m)	Length (mm)
WRU21/15	3596	4000
WRU27/20	5259	4000

Dimensions



Designation	H1	W1	Hole Pitch (P)	M x g3	P3
WRU21/15	14.4	37	50	M4 x 8	22
WRU27/20	18.5	42	60	M5 x 7.5	24