

## Standard Front Mounted Grease Nipple

Compatible with Linear Rail SBI.

Dimensions in mm.



Port sizes for grease nipple

Type	Port size	
	Front	Side
SBI 15	M4	M4
SBI 20	M6	M4
SBI 25	M6	M4
SBI 30	M6	M6
SBI 35	M6	M6
SBI 45	PT 1/8	M6
SBI 55	PT 1/8	PT 1/8
SBI 65	PT 1/8	PT 1/8
SBI 20 FL/FLL	M6	M4
SBI 25 FL/FLL	M6	M4
SBI 30 FL/FLL	M6	M6
SBI 35 FL/FLL	M6	M6
SBI 45 FL/FLL	PT 1/8	M6

Seal options

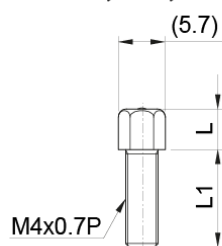
Combination	Seal symbol
End plate + End seals	No symbol (Standard)
End plate + End seals + High dust protection seal (DF)	DF
End plate + End seals + Scraper (ZZ)	ZZ
End plate + End seals + High dust protection seal (DF) + Scraper (ZZ)	DFZZ
End plate + Self lubricant container (MF) + End seals	MF
End plate + Self lubricant container (MF) + End seals + Scraper (ZZ)	MFZZ

## General Data

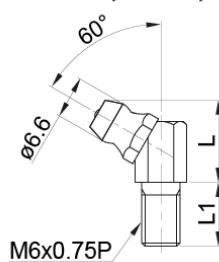
Designation	Compatible with	Thread	Seal Symbol
<b>1N</b>	SBI15	M4x0.7P	None
<b>1D</b>	SBI15	M4x0.7P	ZZ
<b>1F</b>	SBI15	M4x0.7P	DF, DFZZ
<b>A2N</b>	SBI20, SBI25, SBI30, SBI35	M6x0.75P	None
<b>A2D</b>	SBI20, SBI25, SBI30, SBI35	M6x0.75P	ZZ
<b>A2F</b>	SBI20, SBI25, SBI30, SBI35	M6x0.75P	DF, DFZZ
<b>4N</b>	SBI45, SBI55, SBI65	PT 1/8	None
<b>4D</b>	SBI45, SBI55, SBI65	PT 1/8	ZZ
<b>4F</b>	SBI45, SBI55, SBI65	PT 1/8	DF, DFZZ

## Dimensions

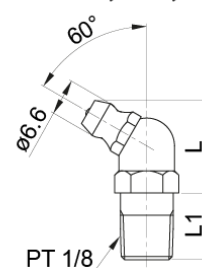
### 1N, 1D, 1F



### A2N, A2D, A2F



### 4N, 4D, 4F



Designation	L	L1
1N	7	5.5
1D	5	9
1F	5	13
A2N	13.5	7
A2D	13.5	10
A2F	13.5	19
4N	17	12
4D	17	16
4F	17	23