

## Table of contents

- **MR-M ZUE Series**
- **MR-W ZUE Series**
- **MR-M SS Series**
- **MR-W SS Series**
- **Standard MR-M Rail**
- **Wide MR-W Rail**
- **Standard MRU-M Rail**
- **Wide MRU-W Rail**
- **Lubrication syringe**
- **RA Grease**

## MR-M ZUE Series

Standard narrow rail type

End seal, bottom seal, reinforcement plate, lubrication storage.

This product is available in different preload and accuracy classes (see more in Technical Information). Please note that we do not have versions with all preload or accuracy classes on stock.

Dimensions in mm.

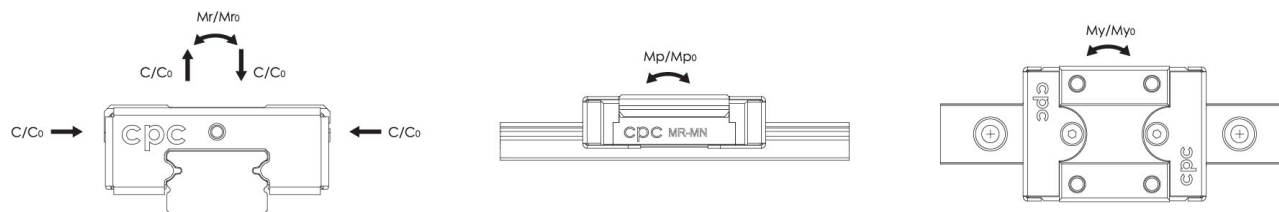
See MR-M SS for sizes 3 and 7.

Please note that blocks and rails are not sold separately for sizes 2 and 3. Due to the small dimensions, blocks and sliders must be assembled and matched carefully to ensure correct quality and tolerances.

Lead times in the table below are only indications. Choice of preload, accuracy class and other options will affect lead time. Please contact us for exact delivery time for your request.



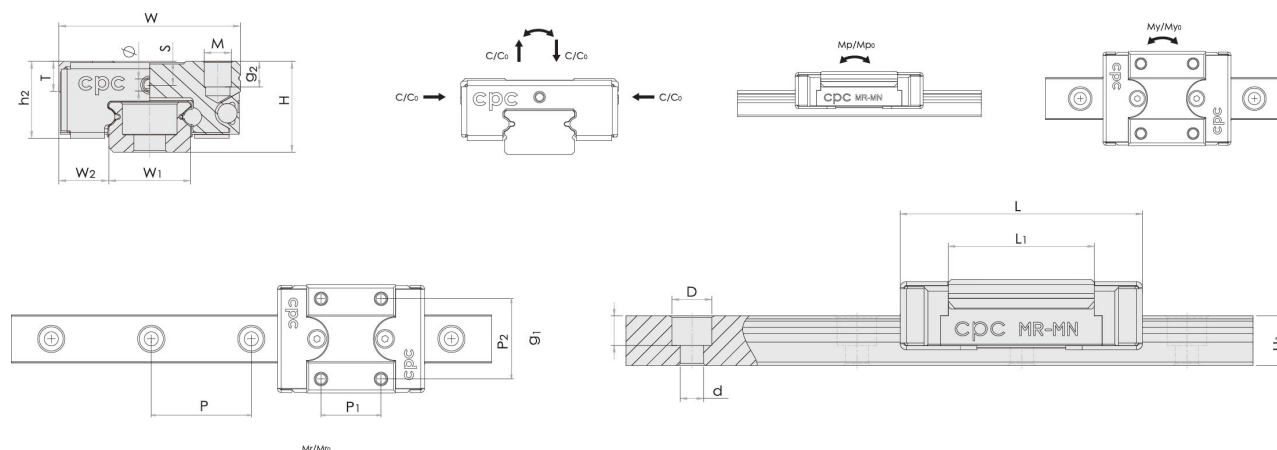
## General Data



Designation	Dynamic Load Capacity C (N)	Static Load Capacity C0 (N)	Static Moment Mr0 (Nm)	Static Moment Mp0 (Nm)	Static Moment My0 (Nm)
MRU2MN-ZU	158	349	0.43	0.54	0.54
MR5MN-ZUE	335	550	1.7	1	1
MR5ML-ZUE	470	900	2.4	2.1	2.1
MR9MN-ZUE	1570	2495	11.7	6.4	6.4
MR9ML-ZUE	2135	3880	18.2	12.4	12.4
MR12MN-ZUE	2308	3465	21.5	12.9	12.9
MR12ML-ZUE	3240	5630	34.9	30.2	30.2
MR15MN-ZUE	3810	5590	43.6	27	27
MR15ML-ZUE	5350	9080	70	63.3	63.3

Designation	Dynamic Moment Mr (Nm)	Dynamic Moment Mp (Nm)	Dynamic Moment My (Nm)	Weight Block (g)
MRU2MN-ZU	0.19	0.24	0.24	0.8
MR5MN-ZUE	1	0.61	0.61	3.5
MR5ML-ZUE	1.25	1.1	1.1	4
MR9MN-ZUE	7.4	4	4	18
MR9ML-ZUE	10	6.8	6.8	28
MR12MN-ZUE	14.3	8.6	8.6	34
MR12ML-ZUE	20.1	17.4	17.4	51
MR15MN-ZUE	29.7	18.4	18.4	61
MR15ML-ZUE	41.2	37.3	37.3	90

## Dimensions



Designation	L	H	W	L1	H1	h2	W1	W2	S
MRU2MN-ZU	12.5	3.2	6	8.8	2	2.6	2	2	-
MR5MN-ZUE	16.8	6	12	10	3.5	5	5	3.5	1.3
MR5ML-ZUE	20.3	6	12	13.5	3.5	5.1	5	3.5	1.3
MR9MN-ZUE	31.9	10	20	20.5	5.5	8.7	9	5.5	2.2
MR9ML-ZUE	42	10	20	30.8	5.5	8.6	9	5.5	2.2
MR12MN-ZUE	37	13	27	22	7.5	11.2	12	7.5	3.2
MR12ML-ZUE	49	13	27	34	7.5	11.1	12	7.5	3.2
MR15MN-ZUE	45.1	16	32	27	9.5	13.3	15	8.5	3.3
MR15ML-ZUE	62	16	32	44	9.5	13.1	15	8.5	3.3

Designation	T	D x d x g1	Hole Pitch (P)	M x g2	P1	P2	ø
MRU2MN-ZU	-	M1	8	M1.4x1.1	4	-	-
MR5MN-ZUE	2	3.5 x 2.4 x 1	15	M2x1.5	-	8	0.7
MR5ML-ZUE	2	3.5 x 2.4 x 1	15	M2.6x2.0	7	-	0.7
MR9MN-ZUE	3.3	6 x 3.5 x 3.5	20	M3x3.0	10	15	1.3
MR9ML-ZUE	3.3	6 x 3.5 x 3.5	20	M3x3.0	16	15	1.3
MR12MN-ZUE	4.3	6 x 3.5 x 4.5	25	M3x3.5	15	20	1.3
MR12ML-ZUE	4.3	6 x 3.5 x 4.5	25	M3x3.5	20	20	1.3
MR15MN-ZUE	4.3	6 x 3.5 x 4.5	40	M3x5.5	20	25	1.8
MR15ML-ZUE	4.3	6 x 3.5 x 4.5	40	M3x5.5	25	25	1.8

## MR-W ZUE Series

Wide rail type

End seal, bottom seal, reinforcement plate, lubrication storage.

This product is available in different preload and accuracy classes (see more in Technical Information). Please note that we do not have versions with all preload or accuracy classes on stock.

Dimensions in mm.

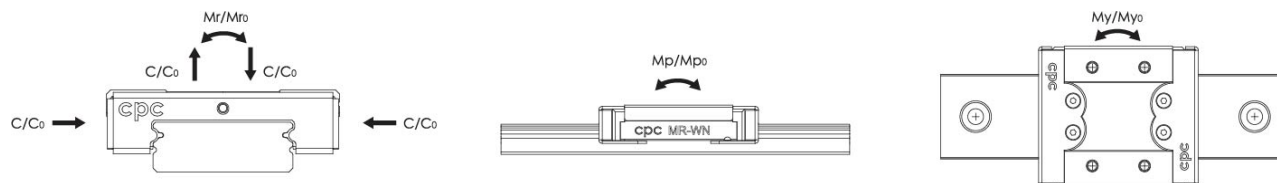
See MR-W SS for sizes 3 and 5.

Please note that blocks and rails are not sold separately for sizes 2 and 3. Due to the small dimensions, blocks and sliders must be assembled and matched carefully to ensure correct quality and tolerances.

Lead times in the table below are only indications. Choice of preload, accuracy class and other options will affect lead time. Please contact us for exact delivery time for your request.



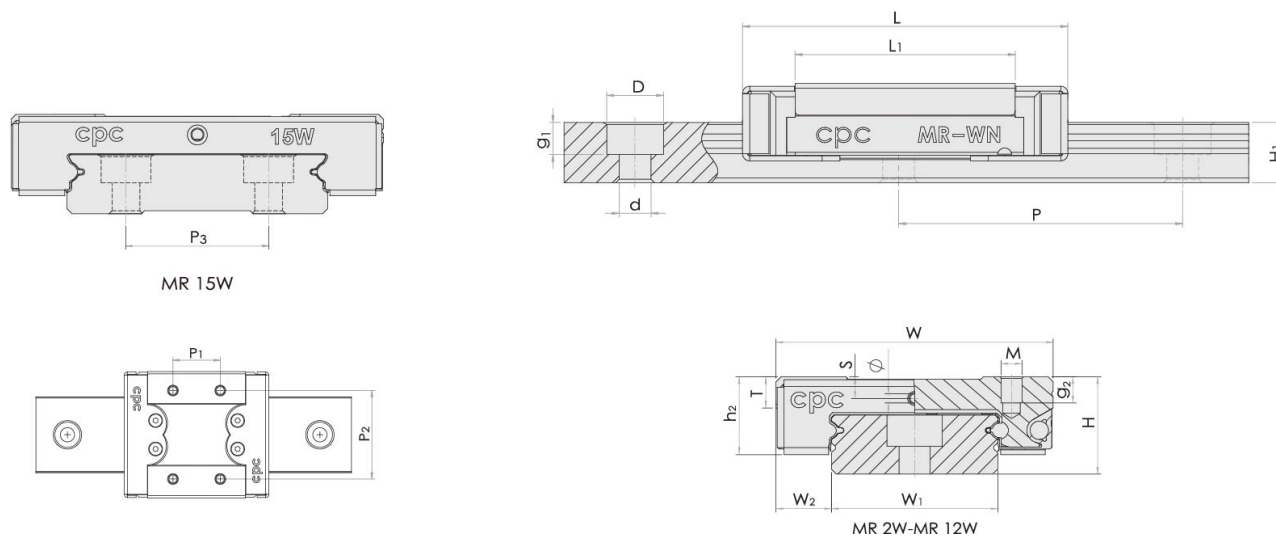
## General Data



Designation	Dynamic Load Capacity C (N)	Static Load Capacity C0 (N)	Static Moment Mr0 (Nm)	Static Moment Mp0 (Nm)	Static Moment My0 (Nm)
MR2WL-ZUE	310	625	1.6	1.2	1.2
MR7WN-ZUE	1180	2095	15	7.3	7.3
MR7WL-ZUE	1570	3140	22.65	14.9	14.9
MR9WN-ZUE	2030	3605	33.2	13.7	13.7
MR9WL-ZUE	2550	4990	45.9	26.7	26.7
MR12WN-ZUE	3065	5200	63.7	26.3	26.3
MR12WL-ZUE	4070	7800	95.6	56.4	56.4
MR15WN-ZUE	5065	8385	171.1	45.7	45.7
MR15WL-ZUE	6725	12580	257.6	93.1	93.1

Designation	Dynamic Moment Mr (Nm)	Dynamic Moment Mp (Nm)	Dynamic Moment My (Nm)	Weight Block (g)
MR2WL-ZUE	0.79	0.6	0.6	3
MR7WN-ZUE	8.4	4.1	4.1	19
MR7WL-ZUE	11.3	7.5	7.5	27
MR9WN-ZUE	18.7	7.7	7.7	37
MR9WL-ZUE	23.5	13.6	13.6	51
MR12WN-ZUE	37.5	15.5	15.5	68
MR12WL-ZUE	49.9	29.4	29.4	96
MR15WN-ZUE	103.4	27.6	27.6	140
MR15WL-ZUE	137.7	49.8	49.8	203

## Dimensions



Designation	L	H	W	L1	H1	h2	W1	W2	S
MR2WL-ZUE	17.5	4	10	11.9	3	3.4	4	3	-
MR7WN-ZUE	32.8	9	25	21.2	5.2	7.9	14	5.5	1.9
MR7WL-ZUE	41.6	9	25	30.1	5.2	7.9	14	5.5	1.9
MR9WN-ZUE	40.4	12	30	27.9	7.3	9.5	18	6	2.6
MR9WL-ZUE	51.9	12	30	39.5	7.3	9.6	18	6	2.6
MR12WN-ZUE	46.1	14	40	31	8.5	11.5	24	8	3.1
MR12WL-ZUE	61.1	14	40	46	8.5	11.4	24	8	3.1
MR15WN-ZUE	57.5	16	60	38.5	9.5	13.2	42	9	3.3
MR15WL-ZUE	76.5	16	60	57.6	9.5	13.2	42	9	3.3

Designation	T	D x d x g1	Hole Pitch (P)	M x g2	P1	P2	P3	Ø
MR2WL-ZUE	1.3	2.8 x 1.8 x 1.0	10	M2x1.3	6.5	-	-	-
MR7WN-ZUE	3.2	6 x 3.5 x 3.5	30	M3x3	10	19	-	1.1
MR7WL-ZUE	3.2	6 x 3.5 x 3.5	30	M3x3	19	19	-	1.1
MR9WN-ZUE	4	6 x 3.5 x 4.5	30	M3x3	12	21	-	1.3
MR9WL-ZUE	4	6 x 3.5 x 4.5	30	M3x3	24	23	-	1.3
MR12WN-ZUE	4.5	8 x 4.5 x 4.5	40	M3x3.5	15	28	-	1.3
MR12WL-ZUE	4.5	8 x 4.5 x 4.5	40	M3x3.5	28	28	-	1.3
MR15WN-ZUE	4.5	8 x 4.5 x 4.5	40	M4x4.5	20	45	23	1.8
MR15WL-ZUE	4.5	8 x 4.5 x 4.5	40	M4x4.5	35	45	23	1.8

## MR-M SS Series

Standard narrow rail type  
End seal

This product is available in different preload and accuracy classes (see more in Technical Information). Please note that we do not have versions with all preload or accuracy classes on stock.

Dimensions in mm.

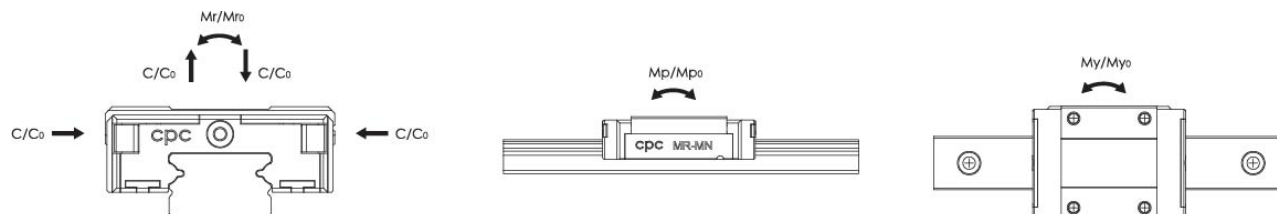
Please note that blocks and rails are not sold separately for sizes 2 and 3. Due to the small dimensions, blocks and sliders must be assembled and matched carefully to ensure correct quality and tolerances.

Lead times in the table below are only indications. Choice of preload, accuracy class and other options will affect lead time. Please contact us for exact delivery time for your request.





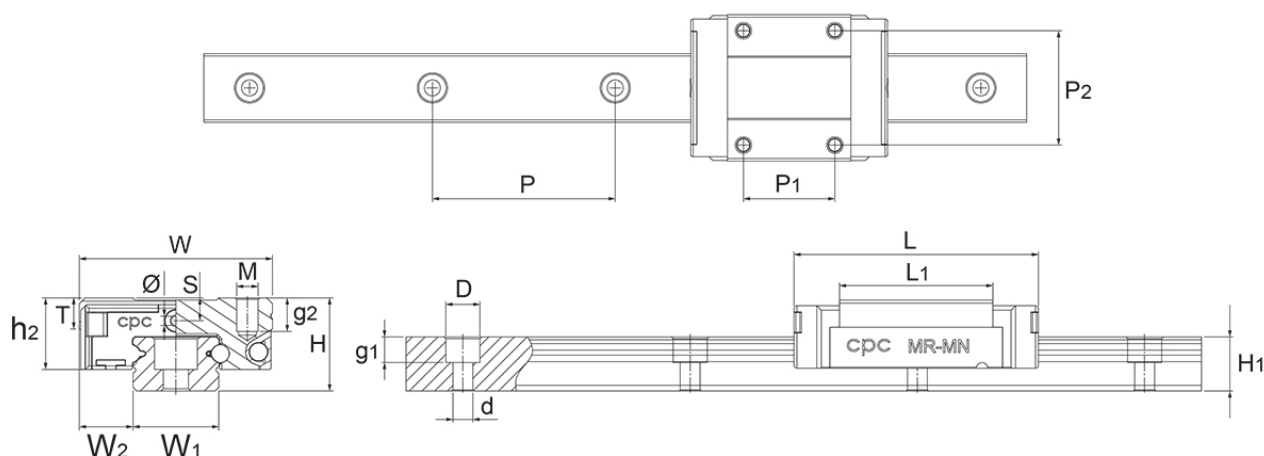
## General Data



Designation	Dynamic Load Capacity C (N)	Static Load Capacity C0 (N)	Static Moment Mr0 (Nm)	Static Moment Mp0 (Nm)	Static Moment My0 (Nm)
MRU2MN-SU	158	349	0.43	0.54	0.54
MRU3MN-SS	190	310	0.6	0.4	0.4
MRU3ML-SS	295	575	0.9	1.1	1.1
MR5MN-SS	335	550	1.7	1	1
MR5ML-SS	470	900	2.4	2.1	2.1
MR7MN-SS	890	1440	5.2	3.3	3.3
MR7ML-SS	1310	2440	9	7.7	7.7
MR9MN-SS	1570	2495	11.7	6.4	6.4
MR9ML-SS	2135	3880	18.2	12.4	12.4
MR12MN-SS	2308	3465	21.5	12.9	12.9
MR12ML-SS	3240	5630	34.9	30.2	30.2
MR15MN-SS	3810	5590	43.6	27	27
MR15ML-SS	5350	9080	70	63.3	63.3

Designation	Dynamic Moment Mr (Nm)	Dynamic Moment Mp (Nm)	Dynamic Moment My (Nm)	Weight Block (g)
MRU2MN-SU	0.19	0.24	0.24	0.8
MRU3MN-SS	0.37	0.25	0.25	0.9
MRU3ML-SS	0.46	0.56	0.56	1.2
MR5MN-SS	1	0.61	0.61	3.5
MR5ML-SS	1.25	1.1	1.1	4
MR7MN-SS	3.2	2	2	8
MR7ML-SS	4.8	4.1	4.1	14
MR9MN-SS	7.4	4	4	18
MR9ML-SS	10	6.8	6.8	28
MR12MN-SS	14.3	8.6	8.6	34
MR12ML-SS	20.1	17.4	17.4	51
MR15MN-SS	29.7	18.4	18.4	61
MR15ML-SS	41.2	37.3	37.3	90

## Dimensions



Designation	L	H	W	L1	H1	h2	W1	W2	S
MRU2MN-SU	12.5	3.2	6	8.8	2	2.6	2	2	-
MRU3MN-SS	11.9	4	8	6.7	2.6	3.2	3	2.5	0.7
MRU3ML-SS	16.1	4	8	11	2.6	3.2	3	2.5	0.7
MR5MN-SS	16.3	6	12	10	3.5	4.7	5	3.5	1.3
MR5ML-SS	19.7	6	12	13.5	3.5	4.6	5	3.5	1.3
MR7MN-SS	24.1	8	17	14.3	4.7	6.6	7	5	1.6
MR7ML-SS	31.5	8	17	21.8	4.7	6.7	7	5	1.6
MR9MN-SS	30.9	10	20	20.5	5.5	7.9	9	5.5	2.2
MR9ML-SS	41.1	10	20	30.8	5.5	8	9	5.5	2.2
MR12MN-SS	35.8	13	27	22	7.5	10.1	12	7.5	3.2
MR12ML-SS	47.8	13	27	34	7.5	10.2	12	7.5	3.2
MR15MN-SS	43.4	16	32	27	9.5	12.2	15	8.5	3.3
MR15ML-SS	60.2	16	32	44	9.5	12.2	15	8.5	3.3

Designation	T	D x d x g1	Hole Pitch (P)	M x g2	P1	P2	$\varnothing$
MRU2MN-SU	-	M1	8	M1.4x1.1	4	-	-
MRU3MN-SS	1.5	M1.6	10	M1.6x1.1	3.5	-	0.3
MRU3ML-SS	1.5	M1.6	10	M2x1.1	5.5	-	0.3
MR5MN-SS	2	3.5 x 2.4 x 1	15	M2x1.5	-	8	0.7
MR5ML-SS	2	3.5 x 2.4 x 1	15	M2.6x2.0	7	-	0.7
MR7MN-SS	2.8	4.2 x 2.4 x 2.3	15	M2x2.5	8	12	1.1
MR7ML-SS	2.8	4.2 x 2.4 x 2.3	15	M2x2.5	13	12	1.1
MR9MN-SS	3.3	6 x 3.5 x 3.5	20	M3x3.0	10	15	1.3

## Dimensions

Designation	T	D x d x g1	Hole Pitch (P)	M x g2	P1	P2	ø
<b>MR9ML-SS</b>	3.3	6 x 3.5 x 3.5	20	M3x3.0	16	15	1.3
<b>MR12MN-SS</b>	4.3	6 x 3.5 x 4.5	25	M3x3.5	15	20	1.3
<b>MR12ML-SS</b>	4.3	6 x 3.5 x 4.5	25	M3x3.5	20	20	1.3
<b>MR15MN-SS</b>	4.3	6 x 3.5 x 4.5	40	M3x5.5	20	25	1.8
<b>MR15ML-SS</b>	4.3	6 x 3.5 x 4.5	40	M3x5.5	25	25	1.8

## MR-W SS Series

Wide rail type  
End seal

This product is available in different preload and accuracy classes (see more in Technical Information). Please note that we do not have versions with all preload or accuracy classes on stock.

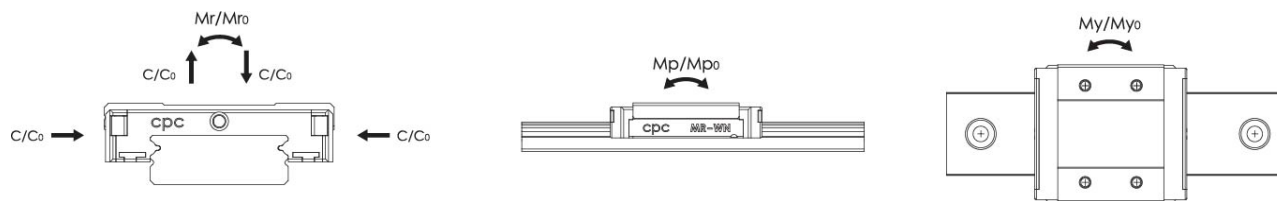
Dimensions in mm.

Please note that blocks and rails are not sold separately for sizes 2 and 3. Due to the small dimensions, blocks and sliders must be assembled and matched carefully to ensure correct quality and tolerances.

Lead times in the table below are only indications. Choice of preload, accuracy class and other options will affect lead time. Please contact us for exact delivery time for your request.



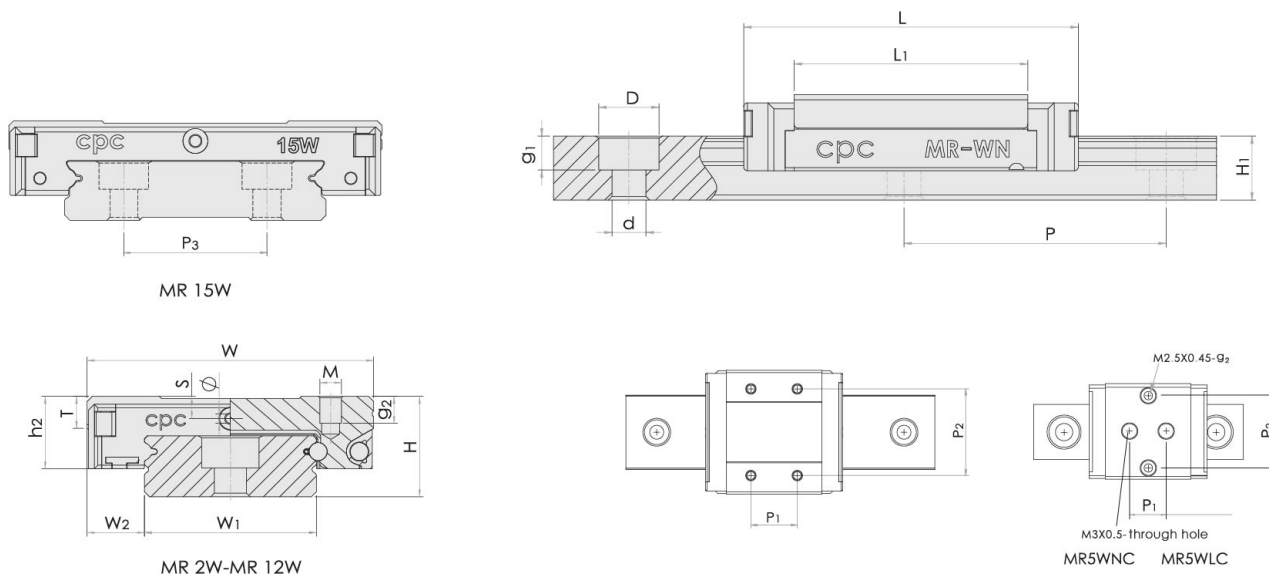
## General Data



Designation	Dynamic Load Capacity C (N)	Static Load Capacity C0 (N)	Static Moment Mr0 (Nm)	Static Moment Mp0 (Nm)	Static Moment My0 (Nm)
MR2WL-SS	310	625	1.6	1.2	1.2
MR3WN-SS	280	530	1.6	0.9	0.9
MR3WL-SS	370	800	2.5	1.9	1.9
MR5WN-SS	475	900	4.6	2.2	2.2
MR5WL-SS	615	1315	6.8	4.1	4.1
MR7WN-SS	1180	2095	15	7.3	7.3
MR7WL-SS	1570	3140	22.65	14.9	14.9
MR9WN-SS	2030	3605	33.2	13.7	13.7
MR9WL-SS	2550	4990	45.9	26.7	26.7
MR12WN-SS	3065	5200	63.7	26.3	26.3
MR12WL-SS	4070	7800	95.6	56.4	56.4
MR15WN-SS	5065	8385	171.1	45.7	45.7
MR15WL-SS	6725	12580	257.6	93.1	93.1

Designation	Dynamic Moment Mr (Nm)	Dynamic Moment Mp (Nm)	Dynamic Moment My (Nm)	Weight Block (g)
MR2WL-SS	0.79	0.6	0.6	3
MR3WN-SS	0.85	0.48	0.48	3.4
MR3WL-SS	1.16	0.88	0.88	3.4
MR5WN-SS	2.4	1.16	1.16	6
MR5WL-SS	3.2	1.92	1.92	8
MR7WN-SS	8.4	4.1	4.1	19
MR7WL-SS	11.3	7.5	7.5	27
MR9WN-SS	18.7	7.7	7.7	37
MR9WL-SS	23.5	13.6	13.6	51
MR12WN-SS	37.5	15.5	15.5	65
MR12WL-SS	49.9	29.4	29.4	93
MR15WN-SS	103.4	27.6	27.6	137
MR15WL-SS	137.7	49.8	49.8	200

## Dimensions



Designation	L	H	W	L1	H1	h2	W1	W2	S
MR2WL-SS	17.4	4	10	11.9	2.6	3	4	3	-
MR3WN-SS	15.3	4.5	12	10	2.7	3.9	6	3	0.8
MR3WL-SS	20.3	4.5	12	15.1	2.7	3.9	6	3	0.8
MR5WN-SS	21.4	6.5	17	15.1	4	5.1	10	3.5	1.2
MR5WL-SS	27.6	6.5	17	21.2	4	5.1	10	3.5	1.2
MR7WN-SS	31.9	9	25	21.2	5.2	7.1	14	5.5	1.9
MR7WL-SS	40.8	9	25	30.1	5.2	7.1	14	5.5	1.9
MR9WN-SS	39.4	12	30	27.9	7.3	8.9	18	6	2.6
MR9WL-SS	50.8	12	30	39.4	7.3	8.8	18	6	2.6
MR12WN-SS	44.9	14	40	31.1	8.5	10.3	24	8	3.1
MR12WL-SS	60	14	40	46	8.5	10.3	24	8	3.1
MR15WN-SS	55.7	16	60	38.5	9.5	12.3	42	9	3.3
MR15WL-SS	74.9	16	60	57.6	9.5	12.3	42	9	3.3

Designation	T	D x d x g1	Hole Pitch (P)	M x g2	P1	P2	P3	ø
MR2WL-SS	1.3	2.8 x 1.8 x 1.0	10	M2x1.3	6.5	-	-	-
MR3WN-SS	1.8	4 x 2.4 x 1.5	15	M2x1.4	4.5	-	-	0.3
MR3WL-SS	1.8	4 x 2.4 x 1.5	15	M2x1.4	8	-	-	0.3
MR5WN-SS	2.3	5.5 x 3 x 1.6	20	M2.5x1.5	6.5	13	-	0.9
MR5WL-SS	2.3	5.5 x 3 x 1.6	20	M2.5x1.5	11	13	-	0.9
MR7WN-SS	3.2	6 x 3.5 x 3.5	30	M3x3	10	19	-	1.1
MR7WL-SS	3.2	6 x 3.5 x 3.5	30	M3x3	19	19	-	1.1

## Dimensions

Designation	T	D x d x g1	Hole Pitch (P)	M x g2	P1	P2	P3	ø
MR9WN-SS	4	6 x 3.5 x 4.5	30	M3x3	12	21	-	1.3
MR9WL-SS	4	6 x 3.5 x 4.5	30	M3x3	24	23	-	1.3
MR12WN-SS	4.5	8 x 4.5 x 4.5	40	M3x3.5	15	28	-	1.4
MR12WL-SS	4.5	8 x 4.5 x 4.5	40	M3x3.5	28	28	-	1.4
MR15WN-SS	4.5	8 x 4.5 x 4.5	40	M4x4.5	20	45	23	1.9
MR15WL-SS	4.5	8 x 4.5 x 4.5	40	M4x4.5	35	45	23	1.9

## Standard MR-M Rail

Tapped from above.

Dimensions in mm.

Please note that blocks and rails are not sold separately for sizes 2 and 3. Due to the small dimensions, blocks and sliders must be assembled and matched carefully to ensure correct quality and tolerances.

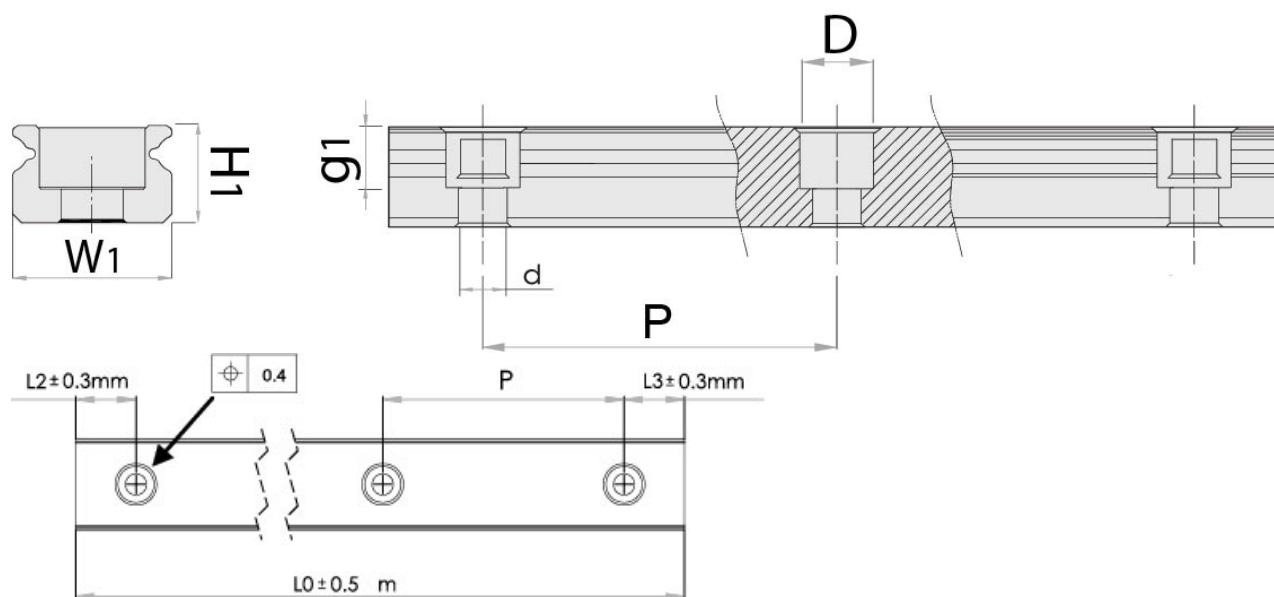




## General Data

Designation	Weight Rail (g/m)
MR5M	116
MR7M	215
MR9M	301
MR12M	602
MR15M	930

## Dimensions



Designation	H1	W1	D x d x g1	Hole Pitch (P)
<b>MR5M</b>	3.5	5	3.5 x 2.4 x 1	15
<b>MR7M</b>	4.7	7	4.2 x 2.4 x 2.3	15
<b>MR9M</b>	5.5	9	6 x 3.5 x 3.5	20
<b>MR12M</b>	7.5	12	6 x 3.5 x 4.5	25
<b>MR15M</b>	9.5	15	6 x 3.5 x 4.5	40

## Wide MR-W Rail

Tapped from above.

Dimensions in mm.

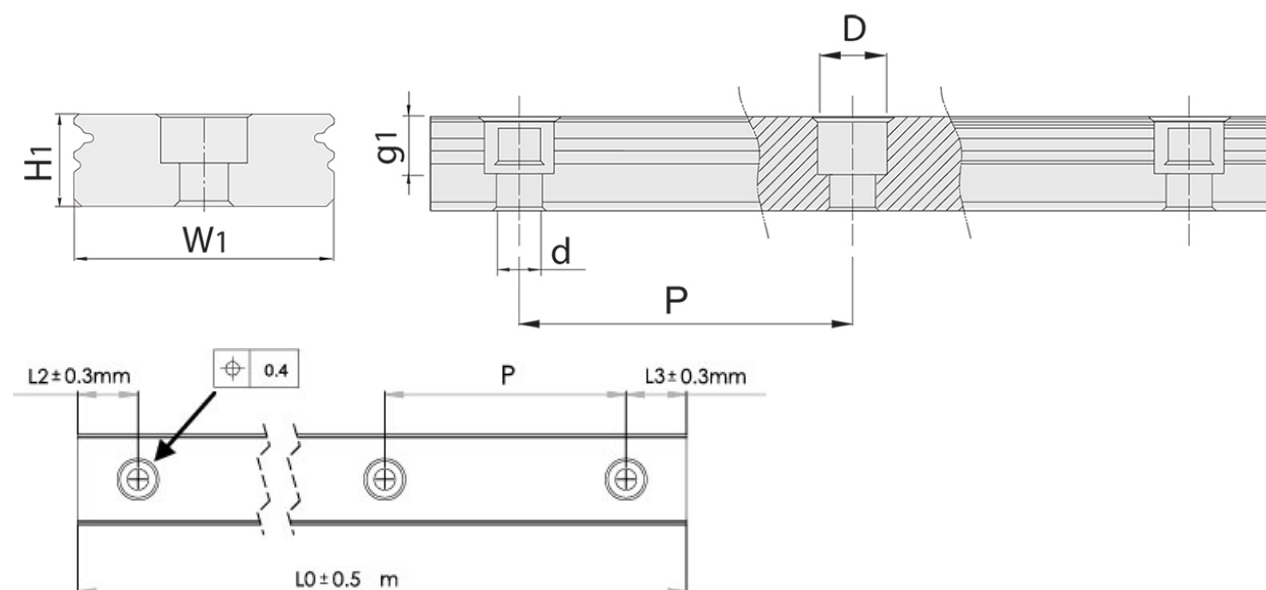
Please note that blocks and rails are not sold separately for sizes 2 and 3. Due to the small dimensions, blocks and sliders must be assembled and matched carefully to ensure correct quality and tolerances.



## General Data

Designation	Weight Rail (g/m)
MR2W	69
MR3W	105
MR5W	280
MR7W	516
MR9W	940
MR12W	1472
MR15W	2818

## Dimensions



Designation	H1	W1	D x d x g1	Hole Pitch (P)
MR2W	2.6	4	2.8 x 1.8 x 1.0	10
MR3W	2.7	6	4 x 2.4 x 1.5	15
MR5W	4	10	5.5 x 3 x 1.6	20
MR7W	5.2	14	6 x 3.5 x 3.5	30
MR9W	7.3	18	6 x 3.5 x 4.5	30
MR12W	8.5	24	8 x 4.5 x 4.5	40
MR15W	9.5	42	8 x 4.5 x 4.5	40

## Standard MRU-M Rail

Tapped from bottom.

Dimensions in mm.

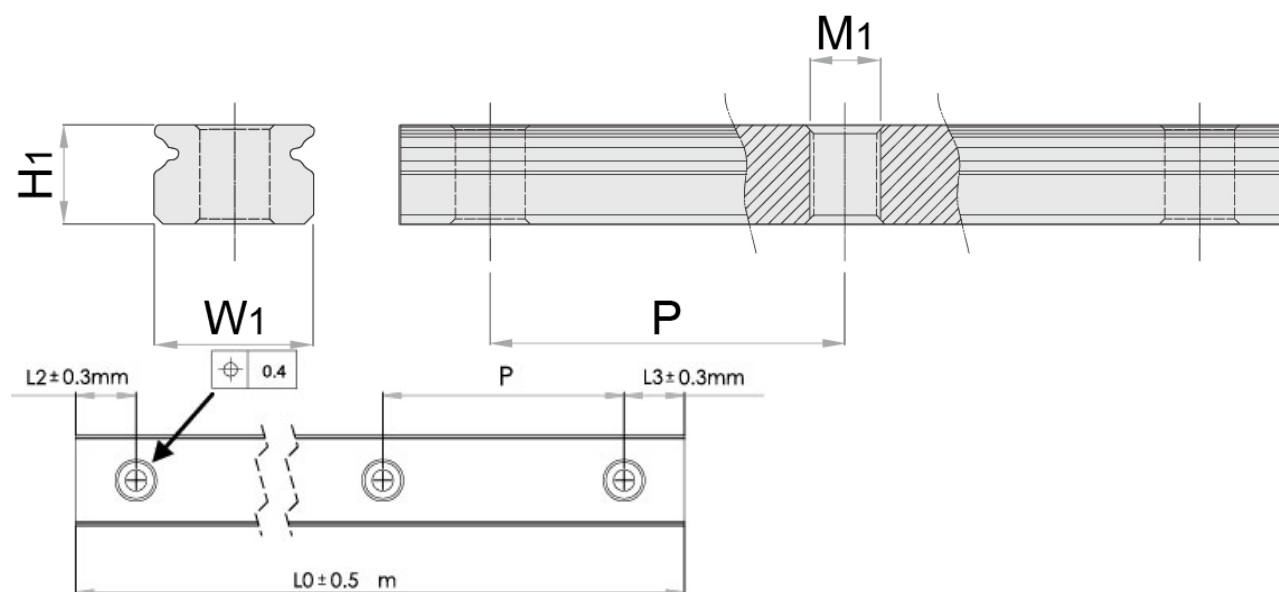
Please note that blocks and rails are not sold separately for sizes 2 and 3. Due to the small dimensions, blocks and sliders must be assembled and matched carefully to ensure correct quality and tolerances.



## General Data

Designation	Weight Rail (g/m)
MRU2M	28
MRU3M	53
MRU5M	116
MRU7M	215
MRU9M	301
MRU12M	602
MRU15M	930

## Dimensions



Designation	H1	W1	Hole Pitch (P)	M1
MRU2M	-	2	8	M1x0.25
MRU3M	2.6	3	10	M1.6x0.35
MRU5M	3.5	5	15	M3x0.5
MRU7M	4.7	7	15	M3x0.5
MRU9M	5.5	9	20	M4x0.7
MRU12M	7.5	12	25	M4x0.7
MRU15M	9.5	15	40	M4x0.7



## Wide MRU-W Rail

Tapped from bottom.

Dimensions in mm.

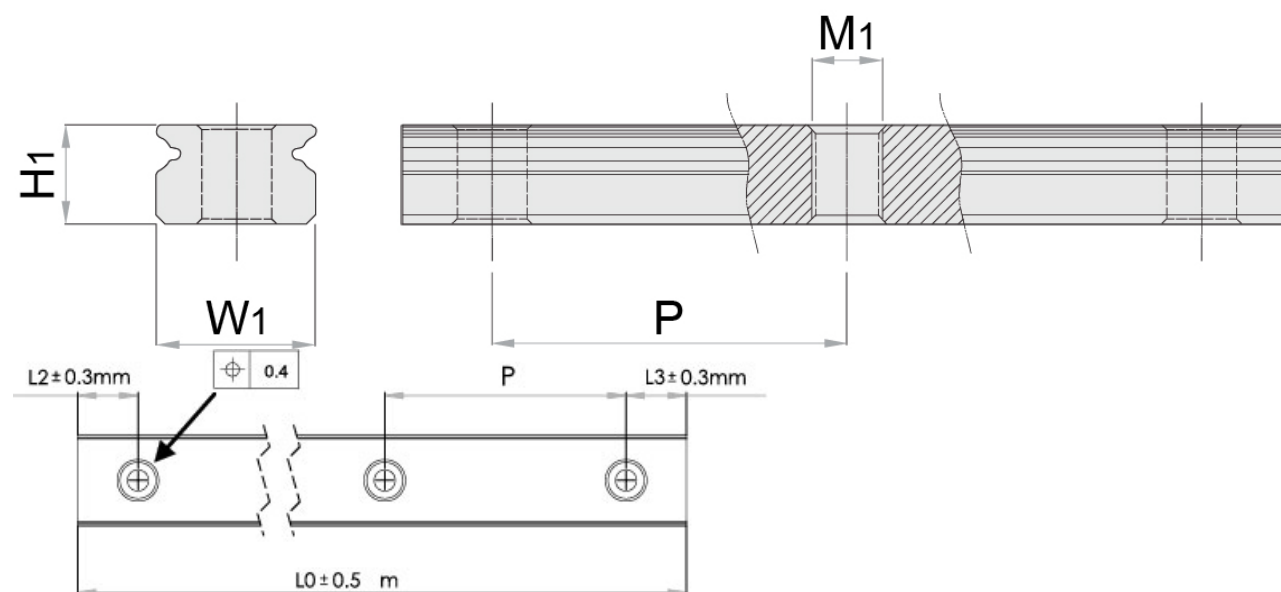
Please note that blocks and rails are not sold separately for sizes 2 and 3. Due to the small dimensions, blocks and sliders must be assembled and matched carefully to ensure correct quality and tolerances.



## General Data

Designation	Weight Rail (g/m)
MRU3W	105
MRU5W	280
MRU7W	516
MRU9W	940
MRU12W	1472
MRU15W	2818

## Dimensions



Designation	H1	W1	Hole Pitch (P)	M1
<b>MRU3W</b>	2.7	6	15	M3x0.5
<b>MRU5W</b>	4	10	20	M3x0.5
<b>MRU7W</b>	5.2	14	30	M4x0.7
<b>MRU9W</b>	7.3	18	30	M4x0.7
<b>MRU12W</b>	8.5	24	40	M5x0.8
<b>MRU15W</b>	9.5	42	40	M5x0.8

## Lubrication syringe

Lubrication syringes are available in many different possible combinations, depending on type of grease (or oil) and the size of the needle pre-defined. A selection of these are presented in the table below. For other types, please contact Rollco.

Lubrication grease:

- 00 For general applications
- 01 For low-friction, low-noise applications
- 02 For clean room applications
- 03 For clean room and vacuum environment applications
- 04 For high-speed applications
- 05 For micro-oscillation applications

Lubrication oil:

For general applications, ISO V32-68



## General Data

### Lubrication Syringe

LUB - 01 - 18G

**Lubricant**

Lubrication grease:

00 (For general applications)

01 (For low-friction, low-noise applications)

02 (For clean room applications)

03 (For clean room and vacuum enviromen applicatiön)

04 (For-high speed applications)

05 (For micro-oscillation applications)

Lubrication oil:

11 (For general applications, ISO V32-68)

**Needle model**

21G (5M/5W)

19G (7M/7W)

18G (9M/9W/12M/12W)

15G (15M / 15W)

Designation	Compatible with	Lubricant	Needle model
<b>LUB-00-21G</b>	MR5/MR5W	00, for general applications	21G
<b>LUB-00-19G</b>	MR7/MR7W	00, for general applications	19G
<b>LUB-00-18G</b>	MR9/MR9W	00, for general applications	18G
<b>LUB-04-18G</b>	MR12/MR12W	04, for high-speed applications	18G
<b>LUB-00-15G</b>	MR15/MR15W	00, for general applications	15G

## RA Grease

NLGI grade 1.5

Clear grease based on synthetic oils and PTFE. Will fulfil all severe specifications from bearing manufacturers, industrial applications and vehicle producers. Very suitable for use where long service life is required and desired. The specific rheological properties of the lubricant will give very low good flow properties of the grease at extremely low temperatures, at the same time the high film strength and thickness will guarantee lubrication also at elevated temperatures. The type of PTFE used will adhere strongly to all surfaces lubricated and give a very low friction coefficient. The grease is water resistant, withstands oxidation, has very good mechanical stability, is completely non-toxic and provides a very wide application temperature range.

**Temperature:** -40 to +260 °C (application range)



## General Data

Designation	Remark	Colour	Weight (g)
RA Grease NLGI 1.5	Cartridge package	Translucent white	400 g