

Central Fastener 6 Anti-rotate

To connect two aluminum profiles at right angles. A hole must be drilled through one of the profiles to provide access to the tightening screw.

Angle: 0° / 90°

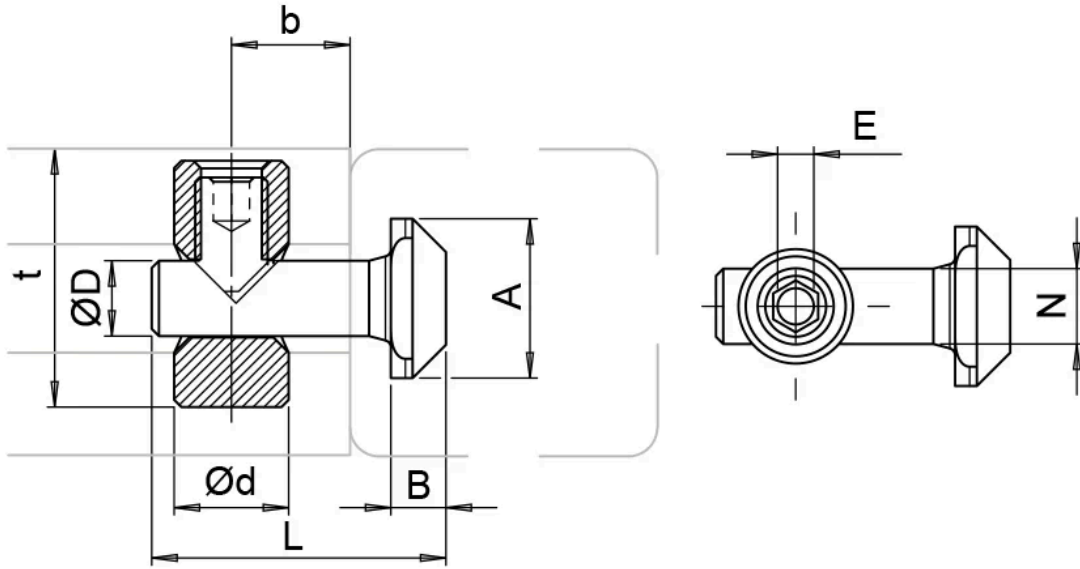
Material: Stainless steel

System: 30 - Slot 6

Type: Fasteners



General Data



| Designation | Description | System | A | B | D |
|-------------|-----------------------------------|-------------|------|-----|-----|
| PZ3912 | Central Fastener 6 Anti-rotate | 30 - Slot 6 | 11.0 | 3.8 | 5.2 |

| Designation | L | b | Weight (g) | E |
|-------------|------|----|------------|-----|
| PZ3912 | 20.3 | 10 | 9.5 | 2.5 |