

Angle Element

Connecting element for mounting a profile at a 45° angle when building intersections or trusswork.

Use the angle element with a universal connector.

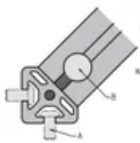
Use caps Slot 6 30 × 30, 45°.

Material: Anodised aluminium

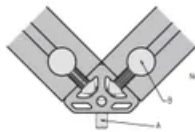
Note: Use a notched slot nut to ensure that the connection is ESD-ready.

System: 30 - Slot 6

Type: Angles Brackets and Corners; Fasteners

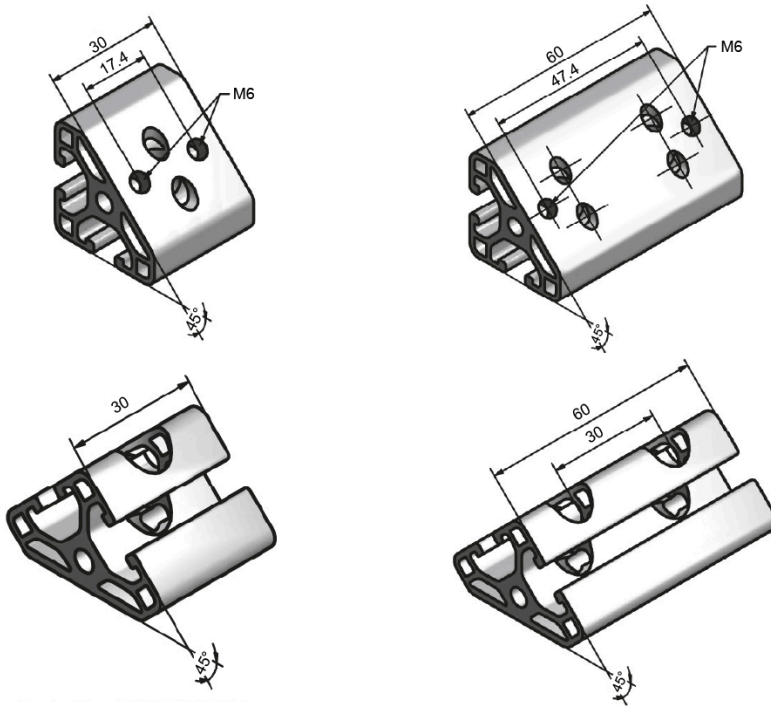


Angle element T1
 Nut S: A Round head screw (DIN 7380-M6x12)
 Washer DIN 125-A4
 B Universal connector 6



Angle element T2
 Nut S: A Round head screw (DIN 7380-M6x16)
 B Universal connector 6

General Data



Designation	Description	System	ESD
PZ3210	Angle element T1-30	30 - Slot 6	Yes
PZ3215	Angle element T1-60	30 - Slot 6	Yes
PZ3220	Angle element T2-30	30 - Slot 6	Yes
PZ3225	Angle element T2-60	30 - Slot 6	Yes