

## FG

Dimensions in mm.

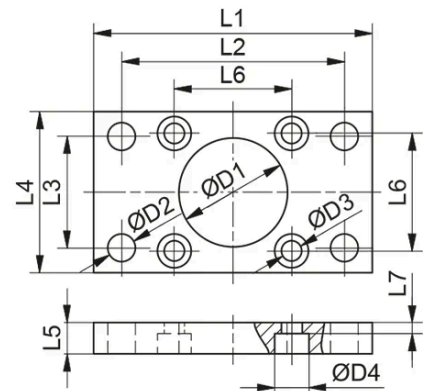
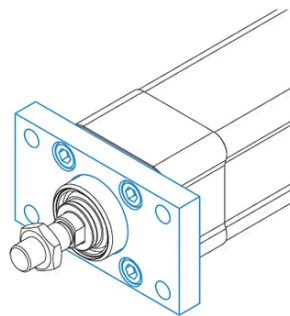
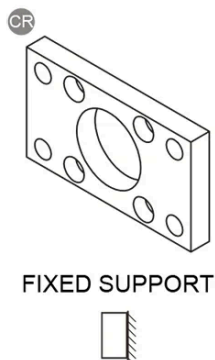
**Material:** Galvanized or stainless steel AISI 304



## General Data

| Designation       | Description | Compatible with | Material                 | Fmax (N) | Mass (kg) |
|-------------------|-------------|-----------------|--------------------------|----------|-----------|
| FG 32 - 5485      | FG 32       | PNCE 32         | Galvanized steel         | F PNCE   | 0.22      |
| FG 32 CR - 69495  | FG 32 CR    | PNCE 32         | Stainless steel AISI 304 | F PNCE   | 0.22      |
| FG 40 - 5487      | FG 40       | PNCE 40         | Galvanized steel         | F PNCE   | 0.28      |
| FG 40 CR - 69497  | FG 40 CR    | PNCE 40         | Stainless steel AISI 304 | F PNCE   | 0.28      |
| FG 50 - 5489      | FG 50       | PNCE 50         | Galvanized steel         | F PNCE   | 0.53      |
| FG 50 CR - 69498  | FG 50 CR    | PNCE 50         | Stainless steel AISI 304 | F PNCE   | 0.53      |
| FG 63 - 5491      | FG 63       | PNCE 63         | Galvanized steel         | F PNCE   | 0.68      |
| FG 63 CR - 69499  | FG 63 CR    | PNCE 63         | Stainless steel AISI 304 | F PNCE   | 0.68      |
| FG 80 - 83009     | FG 80       | PNCE 80         | Galvanized steel         | F PNCE   | 1.4       |
| FG 80 CR - 83013  | FG 80 CR    | PNCE 80         | Stainless steel AISI 304 | F PNCE   | 1.4       |
| FG 100 - 83010    | FG 100      | PNCE 100        | Galvanized steel         | F PNCE   | 1.92      |
| FG 100 CR - 83014 | FG 100 CR   | PNCE 100        | Stainless steel AISI 304 | F PNCE   | 1.92      |

## Dimensions



| Designation       | L1  | L2  | L3 | L4  | L5 | L6   | L7  | D1         | D2         |
|-------------------|-----|-----|----|-----|----|------|-----|------------|------------|
| FG 32 - 5485      | 80  | 64  | 32 | 45  | 10 | 32.5 | 5   | Ø 30 (H11) | Ø 7 (H13)  |
| FG 32 CR - 69495  | 80  | 64  | 32 | 45  | 10 | 32.5 | 5   | Ø 30 (H11) | Ø 7 (H13)  |
| FG 40 - 5487      | 90  | 72  | 36 | 52  | 10 | 38   | 5   | Ø 35 (H11) | Ø 9 (H13)  |
| FG 40 CR - 69497  | 90  | 72  | 36 | 52  | 10 | 38   | 5   | Ø 35 (H11) | Ø 9 (H13)  |
| FG 50 - 5489      | 110 | 90  | 45 | 65  | 12 | 46.5 | 6.5 | Ø 40 (H11) | Ø 9 (H13)  |
| FG 50 CR - 69498  | 110 | 90  | 45 | 65  | 12 | 46.5 | 6.5 | Ø 40 (H11) | Ø 9 (H13)  |
| FG 63 - 5491      | 120 | 100 | 50 | 75  | 12 | 56.5 | 6.5 | Ø 45 (H11) | Ø 9 (H13)  |
| FG 63 CR - 69499  | 120 | 100 | 50 | 75  | 12 | 56.5 | 6.5 | Ø 45 (H11) | Ø 9 (H13)  |
| FG 80 - 83009     | 150 | 126 | 63 | 95  | 16 | 72   | 9   | Ø 60 (H11) | Ø 12 (H13) |
| FG 80 CR - 83013  | 150 | 126 | 63 | 95  | 16 | 72   | 9   | Ø 60 (H11) | Ø 12 (H13) |
| FG 100 - 83010    | 170 | 150 | 75 | 115 | 16 | 89   | 9   | Ø 70 (H11) | Ø 14 (H13) |
| FG 100 CR - 83014 | 170 | 150 | 75 | 115 | 16 | 89   | 9   | Ø 70 (H11) | Ø 14 (H13) |

| Designation      | D3    | D4     |
|------------------|-------|--------|
| FG 32 - 5485     | Ø 6.5 | Ø 10.5 |
| FG 32 CR - 69495 | Ø 6.5 | Ø 10.5 |

| Designation       | D3     | D4     |
|-------------------|--------|--------|
| FG 40 - 5487      | Ø 6.5  | Ø 10.5 |
| FG 40 CR - 69497  | Ø 6.5  | Ø 10.5 |
| FG 50 - 5489      | Ø 8.5  | Ø 13.5 |
| FG 50 CR - 69498  | Ø 8.5  | Ø 13.5 |
| FG 63 - 5491      | Ø 8.5  | Ø 13.5 |
| FG 63 CR - 69499  | Ø 8.5  | Ø 13.5 |
| FG 80 - 83009     | Ø 10.5 | Ø 16.5 |
| FG 80 CR - 83013  | Ø 10.5 | Ø 16.5 |
| FG 100 - 83010    | Ø 10.5 | Ø 16.5 |
| FG 100 CR - 83014 | Ø 10.5 | Ø 16.5 |