

Slider CSW/CSWK

Constructed with zinc-plated steel body and sturdy wipers made of polyamide. Available for all sizes. Depending on the load requirement, slider is configurable with up to six rollers.

Standard sliders are supplied with rollers with 2Z steel disc seals. For dusty environment and splash-proof applications, 2RS rubber seal rollers are available.

The CSWK-sliders, which are made for rail type K, have rollers with circular cross profile. The main load direction should always be on the largest number of the slider-wheels and those wheels should always run on the V-shaped raceway of the K-Rail. So for a typical slider with 3 wheels, the two outer wheels should carry the majority of the load and run in the V-shape and the third (middle) wheel should run on the flat raceway in the K-Rail.

For CSW/CSWK-sliders, the wipers are delivered un-assembled and need to be correctly oriented and assembled. For wipers for K-rails it is especially important that the wipers are laterally adjusted to the rail. In cases when a complete system of rail + slider(s) is ordered, wipers are already assembled, oriented, and adjusted to the rail.

Dimensions in mm.

Material: DIN 11SMnPb28. Zinc-plated according to ISO 2081.

Max. Radial Load Capacity (N): 15,000 (per slider)

Temperature range (°C): -20 to +120



General Data

Designation	Size	Max. Speed (m/s)	Max. Acceleration (m/s)	Roller type	Number of rollers
CSW18-60-2RS-T	18	3	10	CPA18-CPN18	3
CSW18-60-2RS-U	18	3	10	CPA18-CPN18	3
CSW18-60-2Z-T	18	3	10	CPA18-CPN18	3
CSW18-60-2Z-U	18	3	10	CPA18-CPN18	3
CSW18-80-2RS-A-T	18	3	10	CPA18	4
CSW18-80-2RS-A-U	18	3	10	CPA18	4
CSW18-80-2Z-A-T	18	3	10	CPA18	4
CSW18-80-2Z-A-U	18	3	10	CPA18	4
CSW18-80-2RS-B-T	18	3	10	CPA18	4
CSW18-80-2RS-B-U	18	3	10	CPA18	4
CSW18-80-2Z-B-T	18	3	10	CPA18	4
CSW18-80-2Z-B-U	18	3	10	CPA18	4
CSW18-100-2RS-T	18	3	10	CPA18	5
CSW18-100-2RS-U	18	3	10	CPA18	5
CSW18-100-2Z-T	18	3	10	CPA18	5
CSW18-100-2Z-U	18	3	10	CPA18	5
CSW18-120-2RS-A-T	18	3	10	CPA18	6
CSW18-120-2RS-A-U	18	3	10	CPA18	6
CSW18-120-2Z-A-T	18	3	10	CPA18	6
CSW18-120-2Z-A-U	18	3	10	CPA18	6
CSW18-120-2RS-B-T	18	3	10	CPA18	6
CSW18-120-2RS-B-U	18	3	10	CPA18	6
CSW18-120-2Z-B-T	18	3	10	CPA18	6
CSW18-120-2Z-B-U	18	3	10	CPA18	6
CSW28-80-2RS-T	28	5	15	CPA28-CPN28	3
CSW28-80-2RS-U	28	5	15	CPA28-CPN28	3
CSW28-80-2Z-T	28	5	15	CPA28-CPN28	3
CSW28-80-2Z-U	28	5	15	CPA28-CPN28	3
CSW28-100-2RS-A-T	28	5	15	CPA28	4
CSW28-100-2RS-A-U	28	5	15	CPA28	4

General Data

Designation	Size	Max. Speed (m/s)	Max. Acceleration (m/s)	Roller type	Number of rollers
CSW28-100-2Z-A-T	28	5	15	CPA28	4
CSW28-100-2Z-A-U	28	5	15	CPA28	4
CSW28-100-2RS-B-T	28	5	15	CPA28	4
CSW28-100-2RS-B-U	28	5	15	CPA28	4
CSW28-100-2Z-B-T	28	5	15	CPA28	4
CSW28-100-2Z-B-U	28	5	15	CPA28	4
CSW28-125-2RS-T	28	5	15	CPA28	5
CSW28-125-2RS-U	28	5	15	CPA28	5
CSW28-125-2Z-T	28	5	15	CPA28	5
CSW28-125-2Z-U	28	5	15	CPA28	5
CSW28-150-2RS-A-T	28	5	15	CPA28	6
CSW28-150-2RS-A-U	28	5	15	CPA28	6
CSW28-150-2Z-A-T	28	5	15	CPA28	6
CSW28-150-2Z-A-U	28	5	15	CPA28	6
CSW28-150-2RS-B-T	28	5	15	CPA28	6
CSW28-150-2RS-B-U	28	5	15	CPA28	6
CSW28-150-2Z-B-T	28	5	15	CPA28	6
CSW28-150-2Z-B-U	28	5	15	CPA28	6
CSW43-120-2RS-T	43	7	15	CPA43-CPN43	3
CSW43-120-2RS-U	43	7	15	CPA43-CPN43	3
CSW43-120-2Z-T	43	7	15	CPA43-CPN43	3
CSW43-120-2Z-U	43	7	15	CPA43-CPN43	3
CSW43-150-2RS-A-T	43	7	15	CPA43	4
CSW43-150-2RS-A-U	43	7	15	CPA43	4
CSW43-150-2Z-A-T	43	7	15	CPA43	4
CSW43-150-2Z-A-U	43	7	15	CPA43	4
CSW43-150-2RS-B-T	43	7	15	CPA43	4
CSW43-150-2RS-B-U	43	7	15	CPA43	4
CSW43-150-2Z-B-T	43	7	15	CPA43	4
CSW43-150-2Z-B-U	43	7	15	CPA43	4
CSW43-190-2RS-T	43	7	15	CPA43	5

General Data

Designation	Size	Max. Speed (m/s)	Max. Acceleration (m/s)	Roller type	Number of rollers
CSW43-190-2RS-U	43	7	15	CPA43	5
CSW43-190-2Z-T	43	7	15	CPA43	5
CSW43-190-2Z-U	43	7	15	CPA43	5
CSW43-230-2RS-A-T	43	7	15	CPA43	6
CSW43-230-2RS-A-U	43	7	15	CPA43	6
CSW43-230-2Z-A-T	43	7	15	CPA43	6
CSW43-230-2Z-A-U	43	7	15	CPA43	6
CSW43-230-2RS-B-T	43	7	15	CPA43	6
CSW43-230-2RS-B-U	43	7	15	CPA43	6
CSW43-230-2Z-B-T	43	7	15	CPA43	6
CSW43-230-2Z-B-U	43	7	15	CPA43	6
CSWK43-120-2Z	43	7	15	CRPA43-CRPN43	3
CSWK43-150-2Z-A	43	7	15	CRPA43	4
CSWK43-150-2Z-B	43	7	15	CRPA43	4
CSWK43-190-2Z	43	7	15	CRPA43	5
CSWK43-230-2Z-A	43	7	15	CRPA43	6
CSWK43-230-2Z-B	43	7	15	CRPA43	6
CSW63-180-2ZR-T	63	9	20	CPA63	3
CSW63-180-2ZR-U	63	9	20	CPA63	3
CSW63-235-2ZR-A-T	63	9	20	CPA63	4
CSW63-235-2ZR-A-U	63	9	20	CPA63	4
CSW63-235-2ZR-B-T	63	9	20	CPA63	4
CSW63-235-2ZR-B-U	63	9	20	CPA63	4
CSW63-290-2ZR-T	63	9	20	CPA63	5
CSW63-290-2ZR-U	63	9	20	CPA63	5
CSW63-345-2ZR-A-T	63	9	20	CPA63	6
CSW63-345-2ZR-A-U	63	9	20	CPA63	6
CSW63-345-2ZR-B-T	63	9	20	CPA63	6
CSW63-345-2ZR-B-U	63	9	20	CPA63	6
CSWK63-180-2ZR	63	9	20	CRPA63	3
CSWK63-235-2ZR-A	63	9	20	CRPA63	4

General Data

Designation	Size	Max. Speed (m/s)	Max. Acceleration (m/s)	Roller type	Number of rollers
CSWK63-235-2ZR-B	63	9	20	CRPA63	4
CSWK63-290-2ZR	63	9	20	CRPA63	5
CSWK63-345-2ZR-A	63	9	20	CRPA63	6
CSWK63-345-2ZR-B	63	9	20	CRPA63	6

Designation	Number of Fixing Holes
CSW18-60-2RS-T	2
CSW18-60-2RS-U	2
CSW18-60-2Z-T	2
CSW18-60-2Z-U	2
CSW18-80-2RS-A-T	2
CSW18-80-2RS-A-U	2
CSW18-80-2Z-A-T	2
CSW18-80-2Z-A-U	2
CSW18-80-2RS-B-T	2
CSW18-80-2RS-B-U	2
CSW18-80-2Z-B-T	2
CSW18-80-2Z-B-U	2
CSW18-100-2RS-T	4
CSW18-100-2RS-U	4
CSW18-100-2Z-T	4
CSW18-100-2Z-U	4
CSW18-120-2RS-A-T	3
CSW18-120-2RS-A-U	3
CSW18-120-2Z-A-T	3
CSW18-120-2Z-A-U	3
CSW18-120-2RS-B-T	3
CSW18-120-2RS-B-U	3
CSW18-120-2Z-B-T	3
CSW18-120-2Z-B-U	3

General Data

Designation	Number of Fixing Holes
CSW28-80-2RS-T	2
CSW28-80-2RS-U	2
CSW28-80-2Z-T	2
CSW28-80-2Z-U	2
CSW28-100-2RS-A-T	2
CSW28-100-2RS-A-U	2
CSW28-100-2Z-A-T	2
CSW28-100-2Z-A-U	2
CSW28-100-2RS-B-T	2
CSW28-100-2RS-B-U	2
CSW28-100-2Z-B-T	2
CSW28-100-2Z-B-U	2
CSW28-125-2RS-T	4
CSW28-125-2RS-U	4
CSW28-125-2Z-T	4
CSW28-125-2Z-U	4
CSW28-150-2RS-A-T	3
CSW28-150-2RS-A-U	3
CSW28-150-2Z-A-T	3
CSW28-150-2Z-A-U	3
CSW28-150-2RS-B-T	3
CSW28-150-2RS-B-U	3
CSW28-150-2Z-B-T	3
CSW28-150-2Z-B-U	3
CSW43-120-2RS-T	2
CSW43-120-2RS-U	2
CSW43-120-2Z-T	2
CSW43-120-2Z-U	2
CSW43-150-2RS-A-T	2
CSW43-150-2RS-A-U	2
CSW43-150-2Z-A-T	2

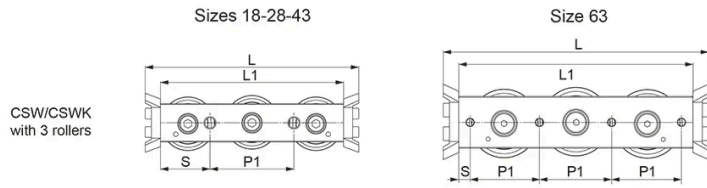
General Data

Designation	Number of Fixing Holes
CSW43-150-2Z-A-U	2
CSW43-150-2RS-B-T	2
CSW43-150-2RS-B-U	2
CSW43-150-2Z-B-T	2
CSW43-150-2Z-B-U	2
CSW43-190-2RS-T	4
CSW43-190-2RS-U	4
CSW43-190-2Z-T	4
CSW43-190-2Z-U	4
CSW43-230-2RS-A-T	3
CSW43-230-2RS-A-U	3
CSW43-230-2Z-A-T	3
CSW43-230-2Z-A-U	3
CSW43-230-2RS-B-T	3
CSW43-230-2RS-B-U	3
CSW43-230-2Z-B-T	3
CSW43-230-2Z-B-U	3
CSWK43-120-2Z	2
CSWK43-150-2Z-A	2
CSWK43-150-2Z-B	2
CSWK43-190-2Z	4
CSWK43-230-2Z-A	3
CSWK43-230-2Z-B	3
CSW63-180-2ZR-T	4
CSW63-180-2ZR-U	4
CSW63-235-2ZR-A-T	5
CSW63-235-2ZR-A-U	5
CSW63-235-2ZR-B-T	5
CSW63-235-2ZR-B-U	5
CSW63-290-2ZR-T	6
CSW63-290-2ZR-U	6

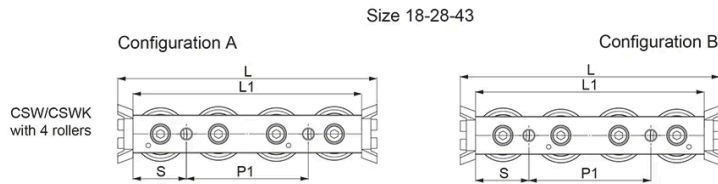
General Data

Designation	Number of Fixing Holes
CSW63-345-2ZR-A-T	7
CSW63-345-2ZR-A-U	7
CSW63-345-2ZR-B-T	7
CSW63-345-2ZR-B-U	7
CSWK63-180-2ZR	4
CSWK63-235-2ZR-A	5
CSWK63-235-2ZR-B	5
CSWK63-290-2ZR	6
CSWK63-345-2ZR-A	7
CSWK63-345-2ZR-B	7

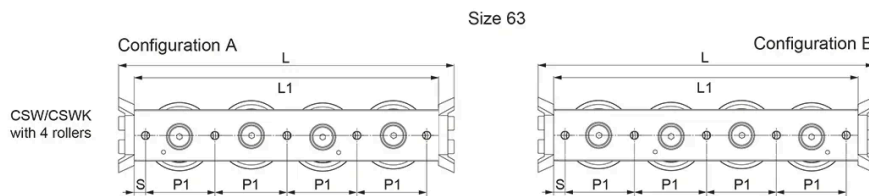
Dimensions



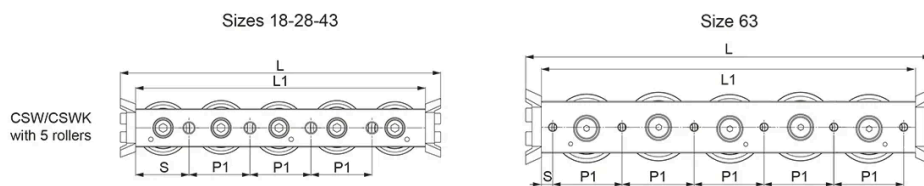
Representation of slider with wiper



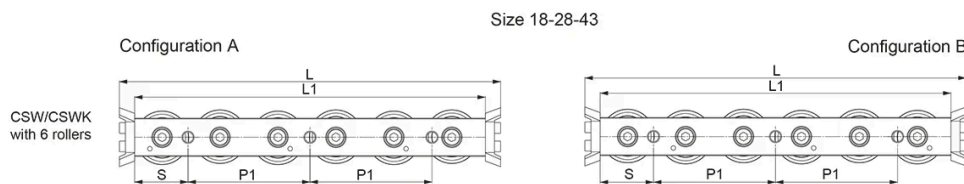
Representation of slider with wiper



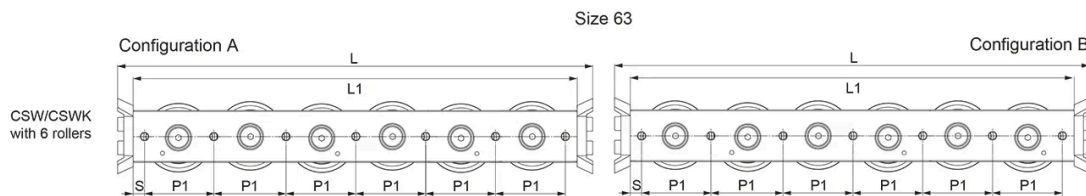
Representation of slider with wiper



Representation of slider with wiper

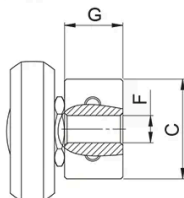


Representation of slider with wiper

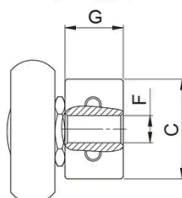


Representation of slider with wiper

CS-slider with prismatic rollers for use in T- and U-rails



CSK-slider with crowned rollers for use in K-rails sizes 43 and 63



Designation	L1	L	C	G	F	P1	S
CSW18-60-2RS-T	60	76	9.5	5.7	M5	20	20
CSW18-60-2RS-U	60	76	9.5	5.7	M5	20	20
CSW18-60-2Z-T	60	76	9.5	5.7	M5	20	20
CSW18-60-2Z-U	60	76	9.5	5.7	M5	20	20
CSW18-80-2RS-A-T	80	96	9.5	5.7	M5	40	20
CSW18-80-2RS-A-U	80	96	9.5	5.7	M5	40	20
CSW18-80-2Z-A-T	80	96	9.5	5.7	M5	40	20
CSW18-80-2Z-A-U	80	96	9.5	5.7	M5	40	20
CSW18-80-2RS-B-T	80	96	9.5	5.7	M5	40	20
CSW18-80-2RS-B-U	80	96	9.5	5.7	M5	40	20
CSW18-80-2Z-B-T	80	96	9.5	5.7	M5	40	20
CSW18-80-2Z-B-U	80	96	9.5	5.7	M5	40	20
CSW18-100-2RS-T	100	116	9.5	5.7	M5	20	20
CSW18-100-2RS-U	100	116	9.5	5.7	M5	20	20
CSW18-100-2Z-T	100	116	9.5	5.7	M5	20	20
CSW18-100-2Z-U	100	116	9.5	5.7	M5	20	20
CSW18-120-2RS-A-T	120	136	9.5	5.7	M5	40	20
CSW18-120-2RS-A-U	120	136	9.5	5.7	M5	40	20
CSW18-120-2Z-A-T	120	136	9.5	5.7	M5	40	20
CSW18-120-2Z-A-U	120	136	9.5	5.7	M5	40	20
CSW18-120-2RS-B-T	120	136	9.5	5.7	M5	40	20
CSW18-120-2RS-B-U	120	136	9.5	5.7	M5	40	20
CSW18-120-2Z-B-T	120	136	9.5	5.7	M5	40	20
CSW18-120-2Z-B-U	120	136	9.5	5.7	M5	40	20
CSW28-80-2RS-T	80	100	14.9	9.7	M5	35	22.5
CSW28-80-2RS-U	80	100	14.9	9.7	M5	35	22.5
CSW28-80-2Z-T	80	100	14.9	9.7	M5	35	22.5
CSW28-80-2Z-U	80	100	14.9	9.7	M5	35	22.5
CSW28-100-2RS-A-T	100	120	14.9	9.7	M5	50	25
CSW28-100-2RS-A-U	100	120	14.9	9.7	M5	50	25

Dimensions

Designation	L1	L	C	G	F	P1	S
CSW28-100-2Z-A-T	100	120	14.9	9.7	M5	50	25
CSW28-100-2Z-A-U	100	120	14.9	9.7	M5	50	25
CSW28-100-2RS-B-T	100	120	14.9	9.7	M5	50	25
CSW28-100-2RS-B-U	100	120	14.9	9.7	M5	50	25
CSW28-100-2Z-B-T	100	120	14.9	9.7	M5	50	25
CSW28-100-2Z-B-U	100	120	14.9	9.7	M5	50	25
CSW28-125-2RS-T	125	145	14.9	9.7	M5	25	25
CSW28-125-2RS-U	125	145	14.9	9.7	M5	25	25
CSW28-125-2Z-T	125	145	14.9	9.7	M5	25	25
CSW28-125-2Z-U	125	145	14.9	9.7	M5	25	25
CSW28-150-2RS-A-T	150	170	14.9	9.7	M5	50	25
CSW28-150-2RS-A-U	150	170	14.9	9.7	M5	50	25
CSW28-150-2Z-A-T	150	170	14.9	9.7	M5	50	25
CSW28-150-2Z-A-U	150	170	14.9	9.7	M5	50	25
CSW28-150-2RS-B-T	150	170	14.9	9.7	M5	50	25
CSW28-150-2RS-B-U	150	170	14.9	9.7	M5	50	25
CSW28-150-2Z-B-T	150	170	14.9	9.7	M5	50	25
CSW28-150-2Z-B-U	150	170	14.9	9.7	M5	50	25
CSW43-120-2RS-T	120	140	24.9	14.5	M8	55	32.5
CSW43-120-2RS-U	120	140	24.9	14.5	M8	55	32.5
CSW43-120-2Z-T	120	140	24.9	14.5	M8	55	32.5
CSW43-120-2Z-U	120	140	24.9	14.5	M8	55	32.5
CSW43-150-2RS-A-T	150	170	24.9	14.5	M8	80	35
CSW43-150-2RS-A-U	150	170	24.9	14.5	M8	80	35
CSW43-150-2Z-A-T	150	170	24.9	14.5	M8	80	35
CSW43-150-2Z-A-U	150	170	24.9	14.5	M8	80	35
CSW43-150-2RS-B-T	150	170	24.9	14.5	M8	80	35
CSW43-150-2RS-B-U	150	170	24.9	14.5	M8	80	35
CSW43-150-2Z-B-T	150	170	24.9	14.5	M8	80	35
CSW43-150-2Z-B-U	150	170	24.9	14.5	M8	80	35
CSW43-190-2RS-T	190	210	24.9	14.5	M8	40	35

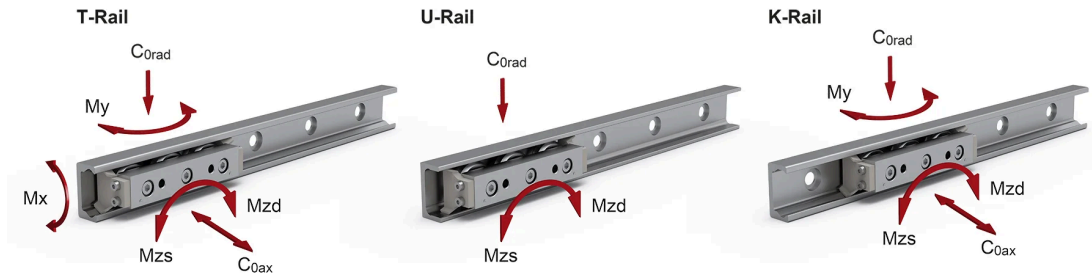
Dimensions

Designation	L1	L	C	G	F	P1	S
CSW43-190-2RS-U	190	210	24.9	14.5	M8	40	35
CSW43-190-2Z-T	190	210	24.9	14.5	M8	40	35
CSW43-190-2Z-U	190	210	24.9	14.5	M8	40	35
CSW43-230-2RS-A-T	230	250	24.9	14.5	M8	80	35
CSW43-230-2RS-A-U	230	250	24.9	14.5	M8	80	35
CSW43-230-2Z-A-T	230	250	24.9	14.5	M8	80	35
CSW43-230-2Z-A-U	230	250	24.9	14.5	M8	80	35
CSW43-230-2RS-B-T	230	250	24.9	14.5	M8	80	35
CSW43-230-2RS-B-U	230	250	24.9	14.5	M8	80	35
CSW43-230-2Z-B-T	230	250	24.9	14.5	M8	80	35
CSW43-230-2Z-B-U	230	250	24.9	14.5	M8	80	35
CSWK43-120-2Z	120	140	24.9	14.5	M8	55	32.5
CSWK43-150-2Z-A	150	170	24.9	14.5	M8	80	35
CSWK43-150-2Z-B	150	170	24.9	14.5	M8	80	35
CSWK43-190-2Z	190	210	24.9	14.5	M8	40	35
CSWK43-230-2Z-A	230	250	24.9	14.5	M8	80	35
CSWK43-230-2Z-B	230	250	24.9	14.5	M8	80	35
CSW63-180-2ZR-T	180	200	39.5	19.5	M8	54	9
CSW63-180-2ZR-U	180	200	39.5	19.5	M8	54	9
CSW63-235-2ZR-A-T	235	255	39.5	19.5	M8	54	9.5
CSW63-235-2ZR-A-U	235	255	39.5	19.5	M8	54	9.5
CSW63-235-2ZR-B-T	235	255	39.5	19.5	M8	54	9.5
CSW63-235-2ZR-B-U	235	255	39.5	19.5	M8	54	9.5
CSW63-290-2ZR-T	290	310	39.5	19.5	M8	54	10
CSW63-290-2ZR-U	290	310	39.5	19.5	M8	54	10
CSW63-345-2ZR-A-T	345	365	39.5	19.5	M8	54	10.5
CSW63-345-2ZR-A-U	345	365	39.5	19.5	M8	54	10.5
CSW63-345-2ZR-B-T	345	365	39.5	19.5	M8	54	10.5
CSW63-345-2ZR-B-U	345	365	39.5	19.5	M8	54	10.5
CSWK63-180-2ZR	180	200	39.5	19.5	M8	54	9
CSWK63-235-2ZR-A	235	255	39.5	19.5	M8	54	9.5

Dimensions

Designation	L1	L	C	G	F	P1	S
CSWK63-235-2ZR-B	235	255	39.5	19.5	M8	54	9.5
CSWK63-290-2ZR	290	310	39.5	19.5	M8	54	10
CSWK63-345-2ZR-A	345	365	39.5	19.5	M8	54	10.5
CSWK63-345-2ZR-B	345	365	39.5	19.5	M8	54	10.5

Load & Weight



The load capacities in the following tables each apply for one slider. When using the slider in U-rails (floating bearing rails) the values are $C_{0ax} = 0$, $M_x = 0$ and $M_y = 0$. When using the sliders in K-rails (compensation rails) the value is: $M_x = 0$.

Designation	C (N)	C0rad (N)	C0ax (N)	Mx (Nm)	My (Nm)
CSW18-60-2RS-T	1530	820	260	1.5	4.7
CSW18-60-2RS-U	1530	820	260	1.5	4.7
CSW18-60-2Z-T	1530	820	260	1.5	4.7
CSW18-60-2Z-U	1530	820	260	1.5	4.7
CSW18-80-2RS-A-T	1530	820	300	2.8	7
CSW18-80-2RS-A-U	1530	820	300	2.8	7
CSW18-80-2Z-A-T	1530	820	300	2.8	7
CSW18-80-2Z-A-U	1530	820	300	2.8	7
CSW18-80-2RS-B-T	1530	820	300	2.8	7
CSW18-80-2RS-B-U	1530	820	300	2.8	7
CSW18-80-2Z-B-T	1530	820	300	2.8	7
CSW18-80-2Z-B-U	1530	820	300	2.8	7
CSW18-100-2RS-T	1830	975	360	2.8	9.4
CSW18-100-2RS-U	1830	975	360	2.8	9.4
CSW18-100-2Z-T	1830	975	360	2.8	9.4
CSW18-100-2Z-U	1830	975	360	2.8	9.4
CSW18-120-2RS-A-T	1830	975	440	3.3	11.8
CSW18-120-2RS-A-U	1830	975	440	3.3	11.8
CSW18-120-2Z-A-T	1830	975	440	3.3	11.8
CSW18-120-2Z-A-U	1830	975	440	3.3	11.8
CSW18-120-2RS-B-T	1830	975	440	3.3	11.8
CSW18-120-2RS-B-U	1830	975	440	3.3	11.8
CSW18-120-2Z-B-T	1830	975	440	3.3	11.8
CSW18-120-2Z-B-U	1830	975	440	3.3	11.8
CSW28-80-2RS-T	4260	2170	640	6.2	16
CSW28-80-2RS-U	4260	2170	640	6.2	16
CSW28-80-2Z-T	4260	2170	640	6.2	16
CSW28-80-2Z-U	4260	2170	640	6.2	16
CSW28-100-2RS-A-T	4260	2170	750	11.5	21.7
CSW28-100-2RS-A-U	4260	2170	750	11.5	21.7

Load & Weight

Designation	C (N)	C0rad (N)	C0ax (N)	Mx (Nm)	My (Nm)
CSW28-100-2Z-A-T	4260	2170	750	11.5	21.7
CSW28-100-2Z-A-U	4260	2170	750	11.5	21.7
CSW28-100-2RS-B-T	4260	2170	750	11.5	21.7
CSW28-100-2RS-B-U	4260	2170	750	11.5	21.7
CSW28-100-2Z-B-T	4260	2170	750	11.5	21.7
CSW28-100-2Z-B-U	4260	2170	750	11.5	21.7
CSW28-125-2RS-T	5065	2580	900	11.5	29
CSW28-125-2RS-U	5065	2580	900	11.5	29
CSW28-125-2Z-T	5065	2580	900	11.5	29
CSW28-125-2Z-U	5065	2580	900	11.5	29
CSW28-150-2RS-A-T	5065	2580	1070	13.7	36.2
CSW28-150-2RS-A-U	5065	2580	1070	13.7	36.2
CSW28-150-2Z-A-T	5065	2580	1070	13.7	36.2
CSW28-150-2Z-A-U	5065	2580	1070	13.7	36.2
CSW28-150-2RS-B-T	5065	2580	1070	13.7	36.2
CSW28-150-2RS-B-U	5065	2580	1070	13.7	36.2
CSW28-150-2Z-B-T	5065	2580	1070	13.7	36.2
CSW28-150-2Z-B-U	5065	2580	1070	13.7	36.2
CSW43-120-2RS-T	12280	5500	1570	23.6	60
CSW43-120-2RS-U	12280	5500	1570	23.6	60
CSW43-120-2Z-T	12280	5500	1570	23.6	60
CSW43-120-2Z-U	12280	5500	1570	23.6	60
CSW43-150-2RS-A-T	12280	5500	1855	43.6	81.5
CSW43-150-2RS-A-U	12280	5500	1855	43.6	81.5
CSW43-150-2Z-A-T	12280	5500	1855	43.6	81.5
CSW43-150-2Z-A-U	12280	5500	1855	43.6	81.5
CSW43-150-2RS-B-T	12280	5500	1855	43.6	81.5
CSW43-150-2RS-B-U	12280	5500	1855	43.6	81.5
CSW43-150-2Z-B-T	12280	5500	1855	43.6	81.5
CSW43-150-2Z-B-U	12280	5500	1855	43.6	81.5
CSW43-190-2RS-T	14675	6540	2215	43.6	108.6

Load & Weight

Designation	C (N)	C0rad (N)	C0ax (N)	Mx (Nm)	My (Nm)
CSW43-190-2RS-U	14675	6540	2215	43.6	108.6
CSW43-190-2Z-T	14675	6540	2215	43.6	108.6
CSW43-190-2Z-U	14675	6540	2215	43.6	108.6
CSW43-230-2RS-A-T	14675	6540	2645	52	135.8
CSW43-230-2RS-A-U	14675	6540	2645	52	135.8
CSW43-230-2Z-A-T	14675	6540	2645	52	135.8
CSW43-230-2Z-A-U	14675	6540	2645	52	135.8
CSW43-230-2RS-B-T	14675	6540	2645	52	135.8
CSW43-230-2RS-B-U	14675	6540	2645	52	135.8
CSW43-230-2Z-B-T	14675	6540	2645	52	135.8
CSW43-230-2Z-B-U	14675	6540	2645	52	135.8
CSWK43-120-2Z	12280	5100	1320	0	50.4
CSWK43-150-2Z-A	12280	5100	1320	0	54.3
CSWK43-150-2Z-B	12280	5100	1320	0	54.3
CSWK43-190-2Z	14675	6065	1570	0	108.7
CSWK43-230-2Z-A	14675	6065	1570	0	108.7
CSWK43-230-2Z-B	14675	6065	1570	0	108.7
CSW63-180-2ZR-T	30750	12500	6000	125	271
CSW63-180-2ZR-U	30750	12500	6000	125	271
CSW63-235-2ZR-A-T	30750	12500	7200	250	413
CSW63-235-2ZR-A-U	30750	12500	7200	250	413
CSW63-235-2ZR-B-T	30750	12500	7200	250	413
CSW63-235-2ZR-B-U	30750	12500	7200	250	413
CSW63-290-2ZR-T	36600	15000	8500	250	511
CSW63-290-2ZR-U	36600	15000	8500	250	511
CSW63-345-2ZR-A-T	36600	15000	10000	350	689
CSW63-345-2ZR-A-U	36600	15000	10000	350	689
CSW63-345-2ZR-B-T	36600	15000	10000	350	689
CSW63-345-2ZR-B-U	36600	15000	10000	350	689
CSWK63-180-2ZR	30750	11550	5045	0	235
CSWK63-235-2ZR-A	30750	11550	5045	0	294

Load & Weight

Designation	C (N)	C0rad (N)	C0ax (N)	Mx (Nm)	My (Nm)
CSWK63-235-2ZR-B	30750	11550	5045	0	294
CSWK63-290-2ZR	36600	13745	6000	0	589
CSWK63-345-2ZR-A	36600	13745	6000	0	589
CSWK63-345-2ZR-B	36600	13745	6000	0	589

Designation	Mzd (Nm)	Mzs (Nm)	Weight (kg)
CSW18-60-2RS-T	8.2	8.2	0.04
CSW18-60-2RS-U	8.2	8.2	0.04
CSW18-60-2Z-T	8.2	8.2	0.04
CSW18-60-2Z-U	8.2	8.2	0.04
CSW18-80-2RS-A-T	8.2	24.7	0.05
CSW18-80-2RS-A-U	8.2	24.7	0.05
CSW18-80-2Z-A-T	8.2	24.7	0.05
CSW18-80-2Z-A-U	8.2	24.7	0.05
CSW18-80-2RS-B-T	24.7	8.2	0.05
CSW18-80-2RS-B-U	24.7	8.2	0.05
CSW18-80-2Z-B-T	24.7	8.2	0.05
CSW18-80-2Z-B-U	24.7	8.2	0.05
CSW18-100-2RS-T	24.7	24.7	0.06
CSW18-100-2RS-U	24.7	24.7	0.06
CSW18-100-2Z-T	24.7	24.7	0.06
CSW18-100-2Z-U	24.7	24.7	0.06
CSW18-120-2RS-A-T	24.7	41.1	0.07
CSW18-120-2RS-A-U	24.7	41.1	0.07
CSW18-120-2Z-A-T	24.7	41.1	0.07
CSW18-120-2Z-A-U	24.7	41.1	0.07
CSW18-120-2RS-B-T	41.1	24.7	0.07
CSW18-120-2RS-B-U	41.1	24.7	0.07
CSW18-120-2Z-B-T	41.1	24.7	0.07
CSW18-120-2Z-B-U	41.1	24.7	0.07
CSW28-80-2RS-T	27.2	27.2	0.155

Load & Weight

Designation	Mzd (Nm)	Mzs (Nm)	Weight (kg)
CSW28-80-2RS-U	27.2	27.2	0.155
CSW28-80-2Z-T	27.2	27.2	0.155
CSW28-80-2Z-U	27.2	27.2	0.155
CSW28-100-2RS-A-T	27.2	81.7	0.195
CSW28-100-2RS-A-U	27.2	81.7	0.195
CSW28-100-2Z-A-T	27.2	81.7	0.195
CSW28-100-2Z-A-U	27.2	81.7	0.195
CSW28-100-2RS-B-T	81.7	27.2	0.195
CSW28-100-2RS-B-U	81.7	27.2	0.195
CSW28-100-2Z-B-T	81.7	27.2	0.195
CSW28-100-2Z-B-U	81.7	27.2	0.195
CSW28-125-2RS-T	81.7	81.7	0.24
CSW28-125-2RS-U	81.7	81.7	0.24
CSW28-125-2Z-T	81.7	81.7	0.24
CSW28-125-2Z-U	81.7	81.7	0.24
CSW28-150-2RS-A-T	81.7	136.1	0.29
CSW28-150-2RS-A-U	81.7	136.1	0.29
CSW28-150-2Z-A-T	81.7	136.1	0.29
CSW28-150-2Z-A-U	81.7	136.1	0.29
CSW28-150-2RS-B-T	136.1	81.7	0.29
CSW28-150-2RS-B-U	136.1	81.7	0.29
CSW28-150-2Z-B-T	136.1	81.7	0.29
CSW28-150-2Z-B-U	136.1	81.7	0.29
CSW43-120-2RS-T	104.5	104.5	0.53
CSW43-120-2RS-U	104.5	104.5	0.53
CSW43-120-2Z-T	104.5	104.5	0.53
CSW43-120-2Z-U	104.5	104.5	0.53
CSW43-150-2RS-A-T	104.5	313.5	0.68
CSW43-150-2RS-A-U	104.5	313.5	0.68
CSW43-150-2Z-A-T	104.5	313.5	0.68
CSW43-150-2Z-A-U	104.5	313.5	0.68

Load & Weight

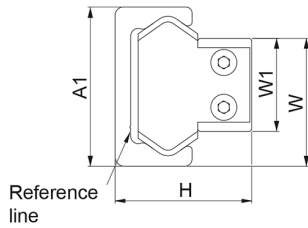
Designation	Mzd (Nm)	Mzs (Nm)	Weight (kg)
CSW43-150-2RS-B-T	313.5	104.5	0.68
CSW43-150-2RS-B-U	313.5	104.5	0.68
CSW43-150-2Z-B-T	313.5	104.5	0.68
CSW43-150-2Z-B-U	313.5	104.5	0.68
CSW43-190-2RS-T	313.5	313.5	0.84
CSW43-190-2RS-U	313.5	313.5	0.84
CSW43-190-2Z-T	313.5	313.5	0.84
CSW43-190-2Z-U	313.5	313.5	0.84
CSW43-230-2RS-A-T	313.5	522.5	1.01
CSW43-230-2RS-A-U	313.5	522.5	1.01
CSW43-230-2Z-A-T	313.5	522.5	1.01
CSW43-230-2Z-A-U	313.5	522.5	1.01
CSW43-230-2RS-B-T	522.5	313.5	1.01
CSW43-230-2RS-B-U	522.5	313.5	1.01
CSW43-230-2Z-B-T	522.5	313.5	1.01
CSW43-230-2Z-B-U	522.5	313.5	1.01
CSWK43-120-2Z	96.9	96.9	0.53
CSWK43-150-2Z-A	96.9	290.7	0.68
CSWK43-150-2Z-B	290.7	96.9	0.68
CSWK43-190-2Z	290.7	290.7	0.84
CSWK43-230-2Z-A	290.7	484.5	1.01
CSWK43-230-2Z-B	484.5	290.7	1.01
CSW63-180-2ZR-T	367	367	1.66
CSW63-180-2ZR-U	367	367	1.66
CSW63-235-2ZR-A-T	367	1100	2.17
CSW63-235-2ZR-A-U	367	1100	2.17
CSW63-235-2ZR-B-T	1100	367	2.17
CSW63-235-2ZR-B-U	1100	367	2.17
CSW63-290-2ZR-T	1100	1100	2.67
CSW63-290-2ZR-U	1100	1100	2.67
CSW63-345-2ZR-A-T	1100	1830	3.17

Load & Weight

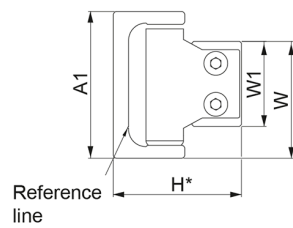
Designation	Mzd (Nm)	Mzs (Nm)	Weight (kg)
CSW63-345-2ZR-A-U	1100	1830	3.17
CSW63-345-2ZR-B-T	1830	1100	3.17
CSW63-345-2ZR-B-U	1830	1100	3.17
CSWK63-180-2ZR	335	335	1.66
CSWK63-235-2ZR-A	335	935	2.17
CSWK63-235-2ZR-B	935	335	2.17
CSWK63-290-2ZR	935	935	2.67
CSWK63-345-2ZR-A	935	1560	3.17
CSWK63-345-2ZR-B	1560	935	3.17

Rail/Slider Combination

T-rail with CSW slider

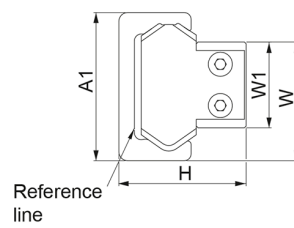


U-rail with CSW slider



* Nom. value

K-rail with CSWK-slider



The K-rail enables the slider to twist around its longitudinal axis.

Designation	A1	H (Slider+T-rail)	H (Slider+U-rail)	H (Slider+K-rail)	W1
CSW18-60-2RS-T	18 (+0.25/-0.10)	15 (+0.15/-0.15)	15*	n/a	9.5 (0/-0.05)
CSW18-60-2RS-U	18 (+0.25/-0.10)	15 (+0.15/-0.15)	15*	n/a	9.5 (0/-0.05)
CSW18-60-2Z-T	18 (+0.25/-0.10)	15 (+0.15/-0.15)	15*	n/a	9.5 (0/-0.05)
CSW18-60-2Z-U	18 (+0.25/-0.10)	15 (+0.15/-0.15)	15*	n/a	9.5 (0/-0.05)
CSW18-80-2RS-A-T	18 (+0.25/-0.10)	15 (+0.15/-0.15)	15*	n/a	9.5 (0/-0.05)
CSW18-80-2RS-A-U	18 (+0.25/-0.10)	15 (+0.15/-0.15)	15*	n/a	9.5 (0/-0.05)
CSW18-80-2Z-A-T	18 (+0.25/-0.10)	15 (+0.15/-0.15)	15*	n/a	9.5 (0/-0.05)
CSW18-80-2Z-A-U	18 (+0.25/-0.10)	15 (+0.15/-0.15)	15*	n/a	9.5 (0/-0.05)
CSW18-80-2RS-B-T	18 (+0.25/-0.10)	15 (+0.15/-0.15)	15*	n/a	9.5 (0/-0.05)
CSW18-80-2RS-B-U	18 (+0.25/-0.10)	15 (+0.15/-0.15)	15*	n/a	9.5 (0/-0.05)
CSW18-80-2Z-B-T	18 (+0.25/-0.10)	15 (+0.15/-0.15)	15*	n/a	9.5 (0/-0.05)
CSW18-80-2Z-B-U	18 (+0.25/-0.10)	15 (+0.15/-0.15)	15*	n/a	9.5 (0/-0.05)
CSW18-100-2RS-T	18 (+0.25/-0.10)	15 (+0.15/-0.15)	15*	n/a	9.5 (0/-0.05)
CSW18-100-2RS-U	18 (+0.25/-0.10)	15 (+0.15/-0.15)	15*	n/a	9.5 (0/-0.05)
CSW18-100-2Z-T	18 (+0.25/-0.10)	15 (+0.15/-0.15)	15*	n/a	9.5 (0/-0.05)
CSW18-100-2Z-U	18 (+0.25/-0.10)	15 (+0.15/-0.15)	15*	n/a	9.5 (0/-0.05)
CSW18-120-2RS-A-T	18 (+0.25/-0.10)	15 (+0.15/-0.15)	15*	n/a	9.5 (0/-0.05)
CSW18-120-2RS-A-U	18 (+0.25/-0.10)	15 (+0.15/-0.15)	15*	n/a	9.5 (0/-0.05)
CSW18-120-2Z-A-T	18 (+0.25/-0.10)	15 (+0.15/-0.15)	15*	n/a	9.5 (0/-0.05)
CSW18-120-2Z-A-U	18 (+0.25/-0.10)	15 (+0.15/-0.15)	15*	n/a	9.5 (0/-0.05)
CSW18-120-2RS-B-T	18 (+0.25/-0.10)	15 (+0.15/-0.15)	15*	n/a	9.5 (0/-0.05)
CSW18-120-2RS-B-U	18 (+0.25/-0.10)	15 (+0.15/-0.15)	15*	n/a	9.5 (0/-0.05)
CSW18-120-2Z-B-T	18 (+0.25/-0.10)	15 (+0.15/-0.15)	15*	n/a	9.5 (0/-0.05)
CSW18-120-2Z-B-U	18 (+0.25/-0.10)	15 (+0.15/-0.15)	15*	n/a	9.5 (0/-0.05)
CSW28-80-2RS-T	28 (+0.25/-0.10)	23.9 (+0.15/-0.15)	23.9*	n/a	14.9 (0/-0.10)
CSW28-80-2RS-U	28 (+0.25/-0.10)	23.9 (+0.15/-0.15)	23.9*	n/a	14.9 (0/-0.10)
CSW28-80-2Z-T	28 (+0.25/-0.10)	23.9 (+0.15/-0.15)	23.9*	n/a	14.9 (0/-0.10)
CSW28-80-2Z-U	28 (+0.25/-0.10)	23.9 (+0.15/-0.15)	23.9*	n/a	14.9 (0/-0.10)
CSW28-100-2RS-A-T	28 (+0.25/-0.10)	23.9 (+0.15/-0.15)	23.9*	n/a	14.9 (0/-0.10)
CSW28-100-2RS-A-U	28 (+0.25/-0.10)	23.9 (+0.15/-0.15)	23.9*	n/a	14.9 (0/-0.10)

Rail/Slider Combination

Designation	A1	H (Slider+T-rail)	H (Slider+U-rail)	H (Slider+K-rail)	W1
CSW28-100-2Z-A-T	28 (+0.25/-0.10)	23.9 (+0.15/-0.15)	23.9*	n/a	14.9 (0/-0.10)
CSW28-100-2Z-A-U	28 (+0.25/-0.10)	23.9 (+0.15/-0.15)	23.9*	n/a	14.9 (0/-0.10)
CSW28-100-2RS-B-T	28 (+0.25/-0.10)	23.9 (+0.15/-0.15)	23.9*	n/a	14.9 (0/-0.10)
CSW28-100-2RS-B-U	28 (+0.25/-0.10)	23.9 (+0.15/-0.15)	23.9*	n/a	14.9 (0/-0.10)
CSW28-100-2Z-B-T	28 (+0.25/-0.10)	23.9 (+0.15/-0.15)	23.9*	n/a	14.9 (0/-0.10)
CSW28-100-2Z-B-U	28 (+0.25/-0.10)	23.9 (+0.15/-0.15)	23.9*	n/a	14.9 (0/-0.10)
CSW28-125-2RS-T	28 (+0.25/-0.10)	23.9 (+0.15/-0.15)	23.9*	n/a	14.9 (0/-0.10)
CSW28-125-2RS-U	28 (+0.25/-0.10)	23.9 (+0.15/-0.15)	23.9*	n/a	14.9 (0/-0.10)
CSW28-125-2Z-T	28 (+0.25/-0.10)	23.9 (+0.15/-0.15)	23.9*	n/a	14.9 (0/-0.10)
CSW28-125-2Z-U	28 (+0.25/-0.10)	23.9 (+0.15/-0.15)	23.9*	n/a	14.9 (0/-0.10)
CSW28-150-2RS-A-T	28 (+0.25/-0.10)	23.9 (+0.15/-0.15)	23.9*	n/a	14.9 (0/-0.10)
CSW28-150-2RS-A-U	28 (+0.25/-0.10)	23.9 (+0.15/-0.15)	23.9*	n/a	14.9 (0/-0.10)
CSW28-150-2Z-A-T	28 (+0.25/-0.10)	23.9 (+0.15/-0.15)	23.9*	n/a	14.9 (0/-0.10)
CSW28-150-2Z-A-U	28 (+0.25/-0.10)	23.9 (+0.15/-0.15)	23.9*	n/a	14.9 (0/-0.10)
CSW28-150-2RS-B-T	28 (+0.25/-0.10)	23.9 (+0.15/-0.15)	23.9*	n/a	14.9 (0/-0.10)
CSW28-150-2RS-B-U	28 (+0.25/-0.10)	23.9 (+0.15/-0.15)	23.9*	n/a	14.9 (0/-0.10)
CSW28-150-2Z-B-T	28 (+0.25/-0.10)	23.9 (+0.15/-0.15)	23.9*	n/a	14.9 (0/-0.10)
CSW28-150-2Z-B-U	28 (+0.25/-0.10)	23.9 (+0.15/-0.15)	23.9*	n/a	14.9 (0/-0.10)
CSW43-120-2RS-T	43 (+0.35/-0.10)	37 (+0.15/-0.15)	37*	n/a	24.9 (0/-0.15)
CSW43-120-2RS-U	43 (+0.35/-0.10)	37 (+0.15/-0.15)	37*	n/a	24.9 (0/-0.15)
CSW43-120-2Z-T	43 (+0.35/-0.10)	37 (+0.15/-0.15)	37*	n/a	24.9 (0/-0.15)
CSW43-120-2Z-U	43 (+0.35/-0.10)	37 (+0.15/-0.15)	37*	n/a	24.9 (0/-0.15)
CSW43-150-2RS-A-T	43 (+0.35/-0.10)	37 (+0.15/-0.15)	37*	n/a	24.9 (0/-0.15)
CSW43-150-2RS-A-U	43 (+0.35/-0.10)	37 (+0.15/-0.15)	37*	n/a	24.9 (0/-0.15)
CSW43-150-2Z-A-T	43 (+0.35/-0.10)	37 (+0.15/-0.15)	37*	n/a	24.9 (0/-0.15)
CSW43-150-2Z-A-U	43 (+0.35/-0.10)	37 (+0.15/-0.15)	37*	n/a	24.9 (0/-0.15)
CSW43-150-2RS-B-T	43 (+0.35/-0.10)	37 (+0.15/-0.15)	37*	n/a	24.9 (0/-0.15)
CSW43-150-2RS-B-U	43 (+0.35/-0.10)	37 (+0.15/-0.15)	37*	n/a	24.9 (0/-0.15)
CSW43-150-2Z-B-T	43 (+0.35/-0.10)	37 (+0.15/-0.15)	37*	n/a	24.9 (0/-0.15)
CSW43-150-2Z-B-U	43 (+0.35/-0.10)	37 (+0.15/-0.15)	37*	n/a	24.9 (0/-0.15)
CSW43-190-2RS-T	43 (+0.35/-0.10)	37 (+0.15/-0.15)	37*	n/a	24.9 (0/-0.15)

Rail/Slider Combination

Designation	A1	H (Slider+T-rail)	H (Slider+U-rail)	H (Slider+K-rail)	W1
CSW43-190-2RS-U	43 (+0.35/-0.10)	37 (+0.15/-0.15)	37*	n/a	24.9 (0/-0.15)
CSW43-190-2Z-T	43 (+0.35/-0.10)	37 (+0.15/-0.15)	37*	n/a	24.9 (0/-0.15)
CSW43-190-2Z-U	43 (+0.35/-0.10)	37 (+0.15/-0.15)	37*	n/a	24.9 (0/-0.15)
CSW43-230-2RS-A-T	43 (+0.35/-0.10)	37 (+0.15/-0.15)	37*	n/a	24.9 (0/-0.15)
CSW43-230-2RS-A-U	43 (+0.35/-0.10)	37 (+0.15/-0.15)	37*	n/a	24.9 (0/-0.15)
CSW43-230-2Z-A-T	43 (+0.35/-0.10)	37 (+0.15/-0.15)	37*	n/a	24.9 (0/-0.15)
CSW43-230-2Z-A-U	43 (+0.35/-0.10)	37 (+0.15/-0.15)	37*	n/a	24.9 (0/-0.15)
CSW43-230-2RS-B-T	43 (+0.35/-0.10)	37 (+0.15/-0.15)	37*	n/a	24.9 (0/-0.15)
CSW43-230-2RS-B-U	43 (+0.35/-0.10)	37 (+0.15/-0.15)	37*	n/a	24.9 (0/-0.15)
CSW43-230-2Z-B-T	43 (+0.35/-0.10)	37 (+0.15/-0.15)	37*	n/a	24.9 (0/-0.15)
CSW43-230-2Z-B-U	43 (+0.35/-0.10)	37 (+0.15/-0.15)	37*	n/a	24.9 (0/-0.15)
CSWK43-120-2Z	43 (+0.35/-0.10)	n/a	n/a	37 (+0.15/-0.15)	24.9 (0/-0.15)
CSWK43-150-2Z-A	43 (+0.35/-0.10)	n/a	n/a	37 (+0.15/-0.15)	24.9 (0/-0.15)
CSWK43-150-2Z-B	43 (+0.35/-0.10)	n/a	n/a	37 (+0.15/-0.15)	24.9 (0/-0.15)
CSWK43-190-2Z	43 (+0.35/-0.10)	n/a	n/a	37 (+0.15/-0.15)	24.9 (0/-0.15)
CSWK43-230-2Z-A	43 (+0.35/-0.10)	n/a	n/a	37 (+0.15/-0.15)	24.9 (0/-0.15)
CSWK43-230-2Z-B	43 (+0.35/-0.10)	n/a	n/a	37 (+0.15/-0.15)	24.9 (0/-0.15)
CSW63-180-2ZR-T	63 (+0.35/-0.10)	49.8 (+0.15/-0.15)	49.8*	n/a	39.5 (+0.15/0)
CSW63-180-2ZR-U	63 (+0.35/-0.10)	49.8 (+0.15/-0.15)	49.8*	n/a	39.5 (+0.15/0)
CSW63-235-2ZR-A-T	63 (+0.35/-0.10)	49.8 (+0.15/-0.15)	49.8*	n/a	39.5 (+0.15/0)
CSW63-235-2ZR-A-U	63 (+0.35/-0.10)	49.8 (+0.15/-0.15)	49.8*	n/a	39.5 (+0.15/0)
CSW63-235-2ZR-B-T	63 (+0.35/-0.10)	49.8 (+0.15/-0.15)	49.8*	n/a	39.5 (+0.15/0)
CSW63-235-2ZR-B-U	63 (+0.35/-0.10)	49.8 (+0.15/-0.15)	49.8*	n/a	39.5 (+0.15/0)
CSW63-290-2ZR-T	63 (+0.35/-0.10)	49.8 (+0.15/-0.15)	49.8*	n/a	39.5 (+0.15/0)
CSW63-290-2ZR-U	63 (+0.35/-0.10)	49.8 (+0.15/-0.15)	49.8*	n/a	39.5 (+0.15/0)
CSW63-345-2ZR-A-T	63 (+0.35/-0.10)	49.8 (+0.15/-0.15)	49.8*	n/a	39.5 (+0.15/0)
CSW63-345-2ZR-A-U	63 (+0.35/-0.10)	49.8 (+0.15/-0.15)	49.8*	n/a	39.5 (+0.15/0)
CSW63-345-2ZR-B-T	63 (+0.35/-0.10)	49.8 (+0.15/-0.15)	49.8*	n/a	39.5 (+0.15/0)
CSW63-345-2ZR-B-U	63 (+0.35/-0.10)	49.8 (+0.15/-0.15)	49.8*	n/a	39.5 (+0.15/0)
CSWK63-180-2ZR	63 (+0.35/-0.10)	n/a	n/a	49.8 (+0.15/-0.15)	39.5 (+0.15/0)
CSWK63-235-2ZR-A	63 (+0.35/-0.10)	n/a	n/a	49.8 (+0.15/-0.15)	39.5 (+0.15/0)

Rail/Slider Combination

Designation	A1	H (Slider+T-rail)	H (Slider+U-rail)	H (Slider+K-rail)	W1
CSWK63-235-2ZR-B	63 (+0.35/-0.10)	n/a	n/a	49.8 (+0.15/-0.15)	39.5 (+0.15/0)
CSWK63-290-2ZR	63 (+0.35/-0.10)	n/a	n/a	49.8 (+0.15/-0.15)	39.5 (+0.15/0)
CSWK63-345-2ZR-A	63 (+0.35/-0.10)	n/a	n/a	49.8 (+0.15/-0.15)	39.5 (+0.15/0)
CSWK63-345-2ZR-B	63 (+0.35/-0.10)	n/a	n/a	49.8 (+0.15/-0.15)	39.5 (+0.15/0)

Designation	W
CSW18-60-2RS-T	14 (+0.05/-0.25)
CSW18-60-2RS-U	14 (+0.05/-0.25)
CSW18-60-2Z-T	14 (+0.05/-0.25)
CSW18-60-2Z-U	14 (+0.05/-0.25)
CSW18-80-2RS-A-T	14 (+0.05/-0.25)
CSW18-80-2RS-A-U	14 (+0.05/-0.25)
CSW18-80-2Z-A-T	14 (+0.05/-0.25)
CSW18-80-2Z-A-U	14 (+0.05/-0.25)
CSW18-80-2RS-B-T	14 (+0.05/-0.25)
CSW18-80-2RS-B-U	14 (+0.05/-0.25)
CSW18-80-2Z-B-T	14 (+0.05/-0.25)
CSW18-80-2Z-B-U	14 (+0.05/-0.25)
CSW18-100-2RS-T	14 (+0.05/-0.25)
CSW18-100-2RS-U	14 (+0.05/-0.25)
CSW18-100-2Z-T	14 (+0.05/-0.25)
CSW18-100-2Z-U	14 (+0.05/-0.25)
CSW18-120-2RS-A-T	14 (+0.05/-0.25)
CSW18-120-2RS-A-U	14 (+0.05/-0.25)
CSW18-120-2Z-A-T	14 (+0.05/-0.25)
CSW18-120-2Z-A-U	14 (+0.05/-0.25)
CSW18-120-2RS-B-T	14 (+0.05/-0.25)
CSW18-120-2RS-B-U	14 (+0.05/-0.25)
CSW18-120-2Z-B-T	14 (+0.05/-0.25)
CSW18-120-2Z-B-U	14 (+0.05/-0.25)
CSW28-80-2RS-T	21.7 (+0.05/-0.35)

Rail/Slider Combination

Designation	W
CSW28-80-2RS-U	21.7 (+0.05/-0.35)
CSW28-80-2Z-T	21.7 (+0.05/-0.35)
CSW28-80-2Z-U	21.7 (+0.05/-0.35)
CSW28-100-2RS-A-T	21.7 (+0.05/-0.35)
CSW28-100-2RS-A-U	21.7 (+0.05/-0.35)
CSW28-100-2Z-A-T	21.7 (+0.05/-0.35)
CSW28-100-2Z-A-U	21.7 (+0.05/-0.35)
CSW28-100-2RS-B-T	21.7 (+0.05/-0.35)
CSW28-100-2RS-B-U	21.7 (+0.05/-0.35)
CSW28-100-2Z-B-T	21.7 (+0.05/-0.35)
CSW28-100-2Z-B-U	21.7 (+0.05/-0.35)
CSW28-125-2RS-T	21.7 (+0.05/-0.35)
CSW28-125-2RS-U	21.7 (+0.05/-0.35)
CSW28-125-2Z-T	21.7 (+0.05/-0.35)
CSW28-125-2Z-U	21.7 (+0.05/-0.35)
CSW28-150-2RS-A-T	21.7 (+0.05/-0.35)
CSW28-150-2RS-A-U	21.7 (+0.05/-0.35)
CSW28-150-2Z-A-T	21.7 (+0.05/-0.35)
CSW28-150-2Z-A-U	21.7 (+0.05/-0.35)
CSW28-150-2RS-B-T	21.7 (+0.05/-0.35)
CSW28-150-2RS-B-U	21.7 (+0.05/-0.35)
CSW28-150-2Z-B-T	21.7 (+0.05/-0.35)
CSW28-150-2Z-B-U	21.7 (+0.05/-0.35)
CSW43-120-2RS-T	34.3 (+0.15/-0.30)
CSW43-120-2RS-U	34.3 (+0.15/-0.30)
CSW43-120-2Z-T	34.3 (+0.15/-0.30)
CSW43-120-2Z-U	34.3 (+0.15/-0.30)
CSW43-150-2RS-A-T	34.3 (+0.15/-0.30)
CSW43-150-2RS-A-U	34.3 (+0.15/-0.30)
CSW43-150-2Z-A-T	34.3 (+0.15/-0.30)
CSW43-150-2Z-A-U	34.3 (+0.15/-0.30)

Rail/Slider Combination

Designation	W
CSW43-150-2RS-B-T	34.3 (+0.15/-0.30)
CSW43-150-2RS-B-U	34.3 (+0.15/-0.30)
CSW43-150-2Z-B-T	34.3 (+0.15/-0.30)
CSW43-150-2Z-B-U	34.3 (+0.15/-0.30)
CSW43-190-2RS-T	34.3 (+0.15/-0.30)
CSW43-190-2RS-U	34.3 (+0.15/-0.30)
CSW43-190-2Z-T	34.3 (+0.15/-0.30)
CSW43-190-2Z-U	34.3 (+0.15/-0.30)
CSW43-230-2RS-A-T	34.3 (+0.15/-0.30)
CSW43-230-2RS-A-U	34.3 (+0.15/-0.30)
CSW43-230-2Z-A-T	34.3 (+0.15/-0.30)
CSW43-230-2Z-A-U	34.3 (+0.15/-0.30)
CSW43-230-2RS-B-T	34.3 (+0.15/-0.30)
CSW43-230-2RS-B-U	34.3 (+0.15/-0.30)
CSW43-230-2Z-B-T	34.3 (+0.15/-0.30)
CSW43-230-2Z-B-U	34.3 (+0.15/-0.30)
CSWK43-120-2Z	34.3 (+0.10/-0.30)
CSWK43-150-2Z-A	34.3 (+0.10/-0.30)
CSWK43-150-2Z-B	34.3 (+0.10/-0.30)
CSWK43-190-2Z	34.3 (+0.10/-0.30)
CSWK43-230-2Z-A	34.3 (+0.10/-0.30)
CSWK43-230-2Z-B	34.3 (+0.10/-0.30)
CSW63-180-2ZR-T	51.6 (+0.15/-0.30)
CSW63-180-2ZR-U	51.6 (+0.15/-0.30)
CSW63-235-2ZR-A-T	51.6 (+0.15/-0.30)
CSW63-235-2ZR-A-U	51.6 (+0.15/-0.30)
CSW63-235-2ZR-B-T	51.6 (+0.15/-0.30)
CSW63-235-2ZR-B-U	51.6 (+0.15/-0.30)
CSW63-290-2ZR-T	51.6 (+0.15/-0.30)
CSW63-290-2ZR-U	51.6 (+0.15/-0.30)
CSW63-345-2ZR-A-T	51.6 (+0.15/-0.30)

Rail/Slider Combination

Designation	W
CSW63-345-2ZR-A-U	51.6 (+0.15/-0.30)
CSW63-345-2ZR-B-T	51.6 (+0.15/-0.30)
CSW63-345-2ZR-B-U	51.6 (+0.15/-0.30)
CSWK63-180-2ZR	51.6 (+0.15/-0.30)
CSWK63-235-2ZR-A	51.6 (+0.15/-0.30)
CSWK63-235-2ZR-B	51.6 (+0.15/-0.30)
CSWK63-290-2ZR	51.6 (+0.15/-0.30)
CSWK63-345-2ZR-A	51.6 (+0.15/-0.30)
CSWK63-345-2ZR-B	51.6 (+0.15/-0.30)