

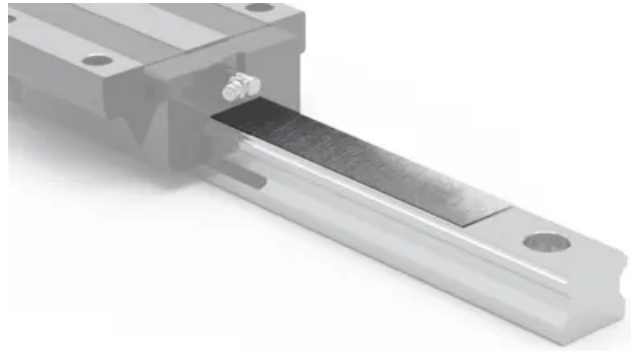
## ST Stainless Dustproof Tape

Stainless steel ST dustproof tape improves rail face sealing and works in conjunction with guide block seals. Conventional plastic plugs do not offer the same improved sealing performance.

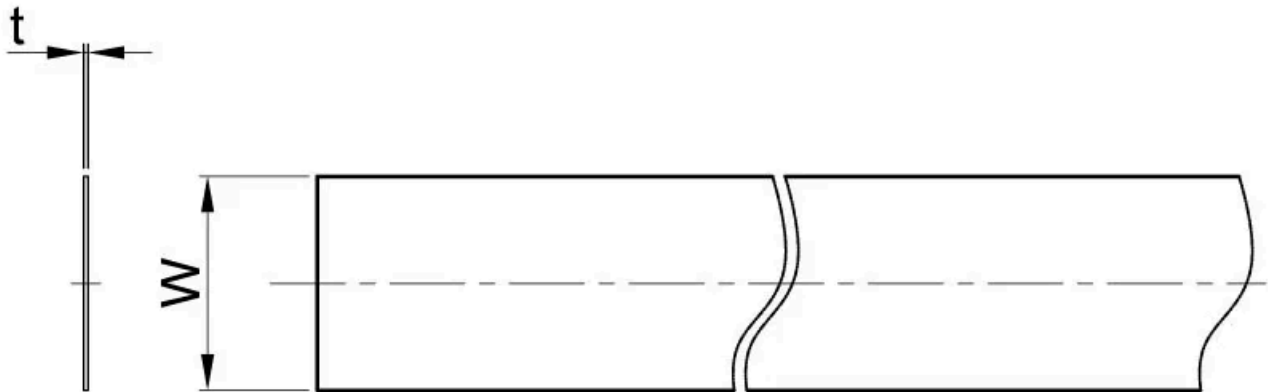
### Installation of ST tape:

1. After assembling a rail to the bed, clean the surface of the rail and remove any oil.
2. Attach the ST tape slowly over the rail length to within 2 or 3 mm from each end of the rail.
3. After attachment to the rail, apply pressure with dry cloth 3 or 4 times along the length of the rail to release encapsulated epoxy. Tape should be applied 4 to 6 hours prior to use to allow initial bonding.

Note: It is strongly recommended to wear safety gloves, the edge of this tape is sharp and can cut as you attach it to the rail.



## Dimensions



Designation	W	t
SBI15ST	11	0,1
SBI20ST	15	0.1
SBI25ST	17	0.1
SBI30ST	21	0.1
SBI35ST	27	0.1
SBI45ST	37	0.1
SBI55ST	43	0.1
SBI65ST	51	0.1