

## Table of contents

- CP planetary gearbox
- CPS planetary gearbox
- CPSK bevel gearbox
- CPK bevel gearbox
- NP planetary gearbox
- NPL planetary gearbox
- NPS planetary gearbox
- NPK bevel gearbox
- NPLK bevel gearbox
- NPSK bevel gearbox
- Adapter kit RHL

## CP planetary gearbox

Economical entry level planetary gearbox with impressive price-performance and quality. CP offers a simple and compact B14 output interface with smooth shaft or with a keyway. The stated maximal backlash is kept throughout the lifetime of the gearbox.

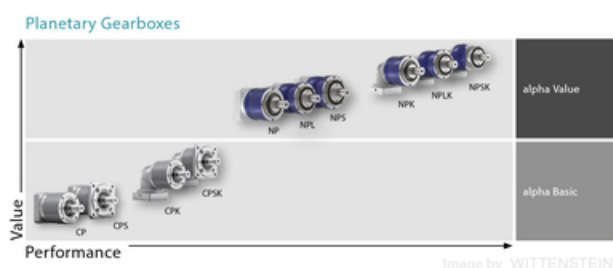
**Ratio:** 3-100

**Max. Torque (Nm):** 17 - 800

**Other models:** food-grade lubrication



Image by WITTENSTEIN



## General Data

| Designation | Ratio   | Size |
|-------------|---|------|
| CP005       | 4 / 5 / 7 / 8 / 10 / 16 / 20 / 25 / 28 / 35 / 40 / 50 / 70 / 100                        | 05   |
| CP015       | 3 / 4 / 5 / 7 / 8 / 9 / 10 / 12 / 15 / 16 / 20 / 25 / 28 / 30 / 35 / 40 / 50 / 70 / 100 | 015  |
| CP025       | 3 / 4 / 5 / 7 / 8 / 9 / 10 / 12 / 15 / 16 / 20 / 25 / 28 / 30 / 35 / 40 / 50 / 70 / 100 | 025  |
| CP035       | 3 / 4 / 5 / 7 / 8 / 9 / 10 / 12 / 15 / 16 / 20 / 25 / 28 / 30 / 35 / 40 / 50 / 70 / 100 | 035  |
| CP045       | 5 / 8 / 10 / 25 / 50 / 100  | 045  |

## CPS planetary gearbox

Economical entry level planetary gearbox with impressive price-performance and quality. CPK offers a long, cylindrical output interface with an optional B5-style flange. Output shaft smooth or with a keyway. The stated maximal backlash is kept throughout the lifetime of the gearbox

**Ratio:** 3-100

**Max. Torque (Nm):** 48-272

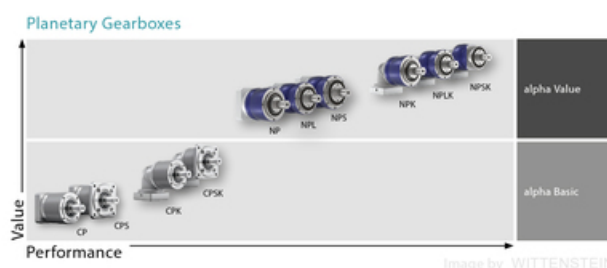
**Other models:** food-grade lubrication



Image by WITTENSTEIN



Image by WITTENSTEIN



## General Data

| Designation   | Ratio   | Remark  | Size |
|---------------|---|---|------|
| <b>CPS015</b> | 3 / 4 / 5 / 7 / 8 / 9 / 10 / 12 / 15 / 16 /<br>20 / 25 / 28 / 30 / 35 / 40 / 50 / 70 /<br>100 | Compatible with Linear unit RHL80 +<br>Adapter kit RHL80  | 015  |
| <b>CPS025</b> | 3 / 4 / 5 / 7 / 8 / 9 / 10 / 12 / 15 / 16 /<br>20 / 25 / 28 / 30 / 35 / 40 / 50 / 70 /<br>100 | -   | 025  |
| <b>CPS035</b> | 3 / 4 / 5 / 7 / 8 / 9 / 10 / 12 / 15 / 16 /<br>20 / 25 / 28 / 30 / 35 / 40 / 50 / 70 /<br>100 | Compatible with Linear unit RHL110+<br>Adapter kit RHL110 | 035  |

## CPSK bevel gearbox

The right-angle gearboxes of the alpha Basic Line are specially designed for applications with medium requirements for positioning accuracy. The extremely compact bevel gear stage enables use in applications with space constraints.

**Ratio:** 3-100

**Max. Torque (Nm):** 33-272

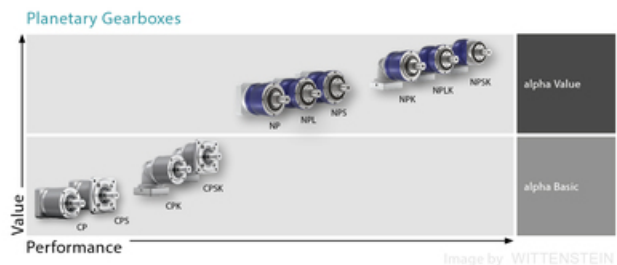
**Other models:** food-grade lubrication



Image by WITTENSTEIN



Image by WITTENSTEIN



## General Data

| Designation    | Ratio   | Remark   | Size |
|----------------|---|--|------|
| <b>CPSK015</b> | 3 / 4 / 5 / 7 / 8 / 9 / 10 / 12 / 15 / 16 /<br>20 / 25 / 28 / 30 / 35 / 40 / 50 / 70 /<br>100 | Compatible with Linear unit RHL80 +<br>Adapter kit RHL80   | 015  |
| <b>CPSK025</b> | 3 / 4 / 5 / 7 / 8 / 9 / 10 / 12 / 15 / 16 /<br>20 / 25 / 28 / 30 / 35 / 40 / 50 / 70 /<br>100 | -  | 025  |
| <b>CPSK035</b> | 3 / 4 / 5 / 7 / 8 / 9 / 10 / 12 / 15 / 16 /<br>20 / 25 / 28 / 30 / 35 / 40 / 50 / 70 /<br>100 | Compatible with Linear unit RHL110<br>+ Adapter kit RHL100 | 035  |

## CPK bevel gearbox

The most economical right-angle planetary gearbox. Based on the CP gearbox with an additional bevel-gear input stage. Used where space-constraints does not allow an in-line assembly with the motor. The stated maximal backlash is kept throughout the lifetime of the gearbox.

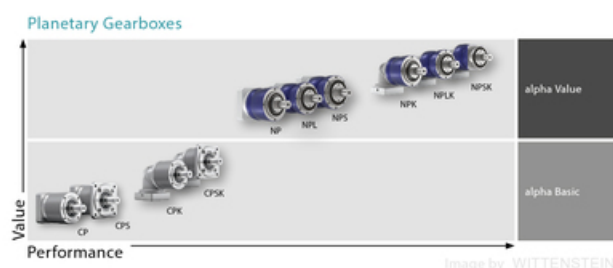
**Ratio:** 3-100

**Max. Torque (Nm):** 14 - 700

**Other models:** food-grade lubrication



Image by WITTENSTEIN





## General Data

| Designation | Ratio  | Size |
|-------------|--|------|
| CPK005      | 4 / 5 / 7 / 8 / 10 / 16 / 20 / 25 / 28 / 35 / 40   | 005  |
| CPK015      | 3 / 4 / 5 / 7 / 8 / 9 / 10 / 12 / 15 / 16 / 20 / 25 / 28 / 30 / 35<br>/ 40 / 50 / 70 / 100 | 015  |
| CPK025      | 3 / 4 / 5 / 7 / 8 / 9 / 10 / 12 / 15 / 16 / 20 / 25 / 28 / 30 / 35<br>/ 40 / 50 / 70 / 100 | 025  |
| CPK035      | 3 / 4 / 5 / 7 / 8 / 9 / 10 / 12 / 15 / 16 / 20 / 25 / 28 / 30 / 35<br>/ 40 / 50 / 70 / 100 | 035  |
| CPK045      | 5 / 8 / 10 / 25 / 50 / 100   | 045  |

## NP planetary gearbox

Universally suitable gearbox from alpha Value Line with the best price-performance level. With LP+ B14 output geometry. Smooth or keyed output shaft. Optional available in High Torque execution for ratio 3:1 and 4:1 and products thereof for 2-stage gears. The stated maximal backlash is kept throughout the lifetime of the gearbox. Contact Rollco for CAD-files.

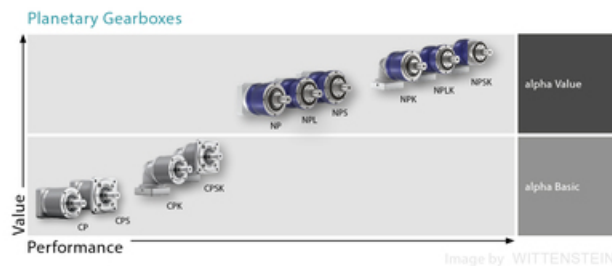
**Ratio:** 3-100

**Max. Torque (Nm):** 18 - 800

**Other models:** food-grade lubrication



Image by WITTENSTEIN



## General Data

| Designation | Ratio  | Size |
|-------------|--|------|
| NP005       | 4 / 5 / 7 / 8 / 10 / 16 / 20 / 25 / 28 / 35 / 40 / 50 / 64 / 70 / 100  | 005  |
| NP015       | 3 / 4 / 5 / 7 / 8 / 10 / 12 / 15 / 16 / 20 / 25 / 28 / 30 / 32 / 35 / 40 / 50 / 64 / 70 / 100 (Gearbox model Standard)     | 015  |
| NP025       | 3 / 4 / 5 / 7 / 8 / 9 / 10 / 12 / 15 / 16 / 20 / 25 / 28 / 30 / 32 / 35 / 40 / 50 / 64 / 70 / 100 (Gearbox model Standard) | 025  |
| NP035       | 3 / 4 / 5 / 7 / 8 / 9 / 10 / 12 / 15 / 16 / 20 / 25 / 28 / 30 / 32 / 35 / 40 / 50 / 64 / 70 / 100 (Gearbox model Standard) | 035  |
| NP045       | 5 / 8 / 10 / 25 / 32 / 50 / 64 / 100   | 045  |

## NPL planetary gearbox

Universally suitable gearbox from alpha Value Line. With LP+ B14 output geometry. Smooth or keyed cylindrical output shaft or DIN 5480 involute splined shaft. Reinforced output bearings enable applications with high radial and axial shaft loads. Optional available in High Torque execution for ratio 3:1 and 4:1 and products thereof for 2-stage gears. The stated maximal backlash is kept throughout the lifetime of the gearbox. Contact Rollco for CAD-files.

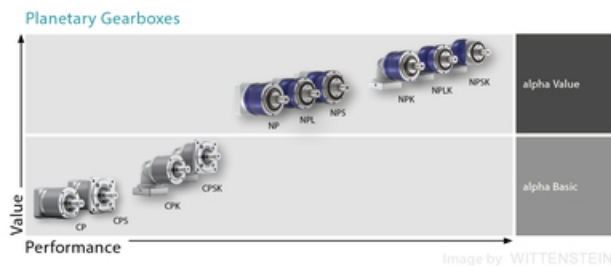
**Ratio:** 3-100

**Max. Torque (Nm):** 51 - 800

**Other models:** food-grade lubrication



Image by WITTENSTEIN



## General Data

| Designation   | Ratio   | Size |
|---------------|---|------|
| <b>NPL015</b> | 3 / 4 / 5 / 7 / 8 / 10 / 12 / 15 / 16 / 20 / 25 / 28 / 30 / 32 /<br>35 / 40 / 50 / 64 / 70 / 100 (Gearbox model Standard)     | 015  |
| <b>NPL025</b> | 3 / 4 / 5 / 7 / 8 / 9 / 10 / 12 / 15 / 16 / 20 / 25 / 28 / 30 / 32<br>/ 35 / 40 / 50 / 64 / 70 / 100 (Gearbox model Standard) | 025  |
| <b>NPL035</b> | 3 / 4 / 5 / 7 / 8 / 9 / 10 / 12 / 15 / 16 / 20 / 25 / 28 / 30 / 32<br>/ 35 / 40 / 50 / 64 / 70 / 100 (Gearbox model Standard) | 035  |
| <b>NPL045</b> | 5 / 8 / 10 / 25 / 32 / 50 / 64 / 100  | 045  |

## NPS planetary gearbox

Universally suitable gearbox from alpha Value Line with the best price-performance level. With SP+ B5 output geometry. Smooth or keyed cylindrical output shaft or DIN 5480 involute splined shaft. Reinforced output bearings enable applications with high radial and axial shaft loads. Optional available in High Torque execution for ratio 3:1 and 4:1 and products thereof for 2-stage gears. The stated maximal backlash is kept throughout the lifetime of the gearbox.

Contact Rollco for CAD-files.

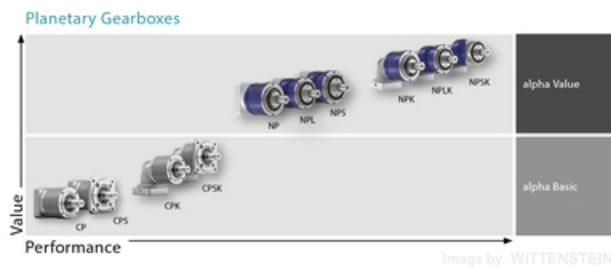
**Ratio:** 3-100

**Max. Torque (Nm):** 51 - 800

**Other models:** food-grade lubrication



Image by WITTENSTEIN



## General Data

| Designation   | Ratio   | Size |
|---------------|---|------|
| <b>NPS015</b> | 3 / 4 / 5 / 7 / 8 / 10 / 12 / 15 / 16 / 20 / 25 / 28 / 30 / 32 /<br>35 / 40 / 50 / 64 / 70 / 100 (Gearbox model standard)     | 015  |
| <b>NPS025</b> | 3 / 4 / 5 / 7 / 8 / 9 / 10 / 12 / 15 / 16 / 20 / 25 / 28 / 30 / 32<br>/ 35 / 40 / 50 / 64 / 70 / 100 (Gearbox model standard) | 025  |
| <b>NPS035</b> | 3 / 4 / 5 / 7 / 8 / 9 / 10 / 12 / 15 / 16 / 20 / 25 / 28 / 30 / 32<br>/ 35 / 40 / 50 / 64 / 70 / 100 (Gearbox model standard) | 035  |
| <b>NPS045</b> | 5 / 8 / 10 / 25 / 32 / 50 / 64 / 100  | 045  |

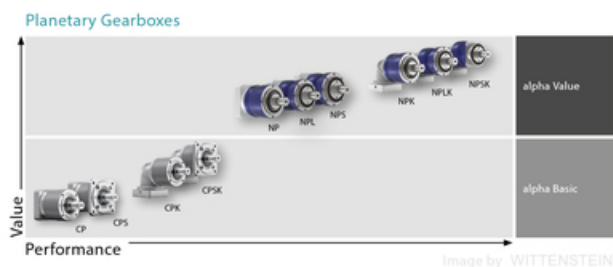
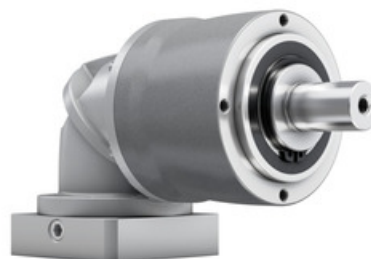
## NPK bevel gearbox

Versatile right-angle planetary gearbox. Based on the NP gearbox with an additional bevel-gear input stage. Used where space-constraints does not allow an in-line assembly with the motor. With LP+ B14 output geometry. Smooth or keyed output shaft. The stated maximal backlash is kept throughout the lifetime of the gearbox. Contact Rollco for CAD-files.

**Ratio:** 3-100

**Max. Torque (Nm):** 14 - 700

**Other models:** food-grade lubrication





## General Data

| Designation   | Ratio  | Size |
|---------------|--|------|
| <b>NPK005</b> | 4/5/7/8/10/16/20/25/28/35/40/50/64/70/100 (Gearbox model Standard)                 | 005  |
| <b>NPK015</b> | 3/4/5/7/8/10/12/15/16/20/25/28/30/32/35/40/50/64/70/100 (Gearbox model Standard)   | 015  |
| <b>NPK025</b> | 3/4/5/7/8/9/10/12/15/16/20/25/28/30/32/35/40/50/64/70/100 (Gearbox model Standard) | 025  |
| <b>NPK035</b> | 3/4/5/7/8/9/10/12/15/16/20/25/28/30/32/35/40/50/64/70/100 (Gearbox model Standard) | 035  |
| <b>NPK045</b> | 5/8/10/25/32/50/64/100 (Gearbox model Standard)                                    | 045  |

## NPLK bevel gearbox

Versatile right-angle planetary gearbox. Based on the NPL gearbox with an additional bevel-gear input stage. Used where space-constraints does not allow an in-line assembly with the motor. With LP+ B14 output geometry. Smooth or keyed cylindrical output shaft or DIN 5480 involute splined shaft. Reinforced output bearings enable applications with high radial and axial shaft loads. The stated maximal backlash is kept throughout the lifetime of the gearbox.

Contact Rollco for CAD-files.

**Ratio:** 3-100

**Max. Torque (Nm):** 33 - 700

**Other models:** food-grade lubrication

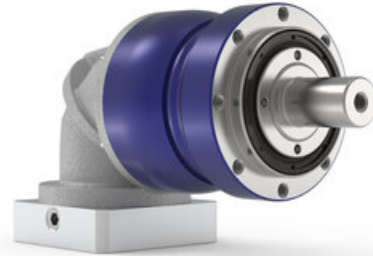
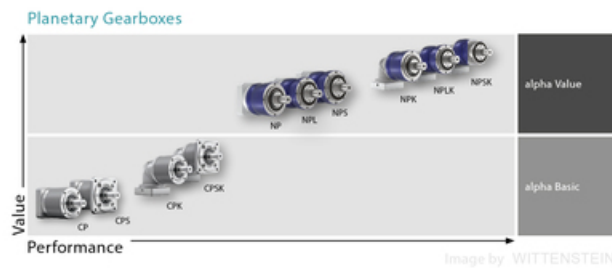


Image by WITTENSTEIN



## General Data

| Designation    | Ratio  | Size |
|----------------|--|------|
| <b>NPLK015</b> | 3 / 4 / 5 / 7 / 8 / 10 / 12 / 15 / 16 / 20 / 25 / 28 / 30 / 32 / 35 / 40 / 50 / 64 / 70 / 100 (Gearbox model standard)     | 015  |
| <b>NPLK025</b> | 3 / 4 / 5 / 7 / 8 / 9 / 10 / 12 / 15 / 16 / 20 / 25 / 28 / 30 / 32 / 35 / 40 / 50 / 64 / 70 / 100 (Gearbox model standard) | 025  |
| <b>NPLK035</b> | 3 / 4 / 5 / 7 / 8 / 9 / 10 / 12 / 15 / 16 / 20 / 25 / 28 / 30 / 32 / 35 / 40 / 50 / 64 / 70 / 100 (Gearbox model standard) | 035  |
| <b>NPLK045</b> | 5 / 8 / 10 / 25 / 32 / 50 / 64 / 100 (Gearbox model standard)  | 045  |

## NPSK bevel gearbox

Versatile right-angle planetary gearbox. Based on the NPL gearbox with an additional bevel-gear input stage. Used where space-constraints does not allow an in-line assembly with the motor. With SP+ B5 output geometry. Smooth or keyed cylindrical output shaft or DIN 5480 involute splined shaft. Reinforced output bearings enable applications with high radial and axial shaft loads. The stated maximal backlash is kept throughout the lifetime of the gearbox.

Contact Rollco for CAD-files.

**Ratio:** 3-100

**Max. Torque (Nm):** 33 - 700

**Other models:** food-grade lubrication

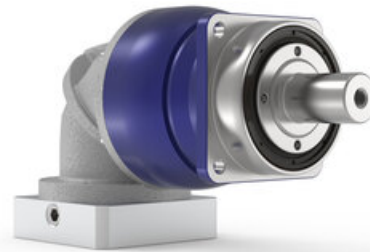
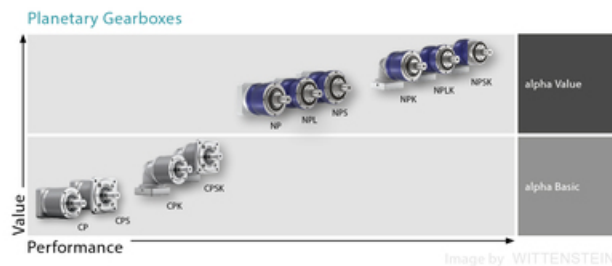


Image by WITTENSTEIN

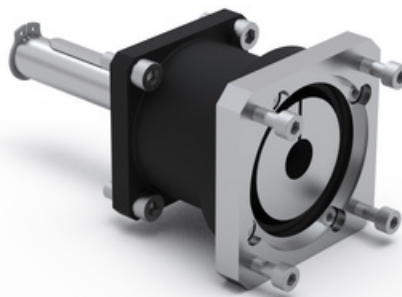


## General Data

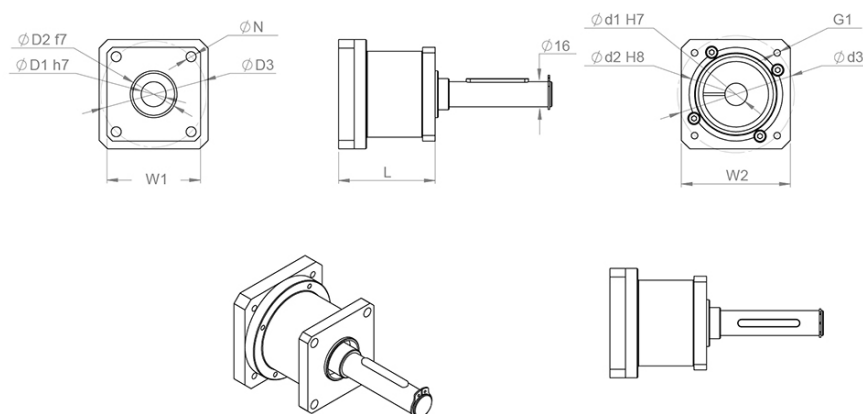
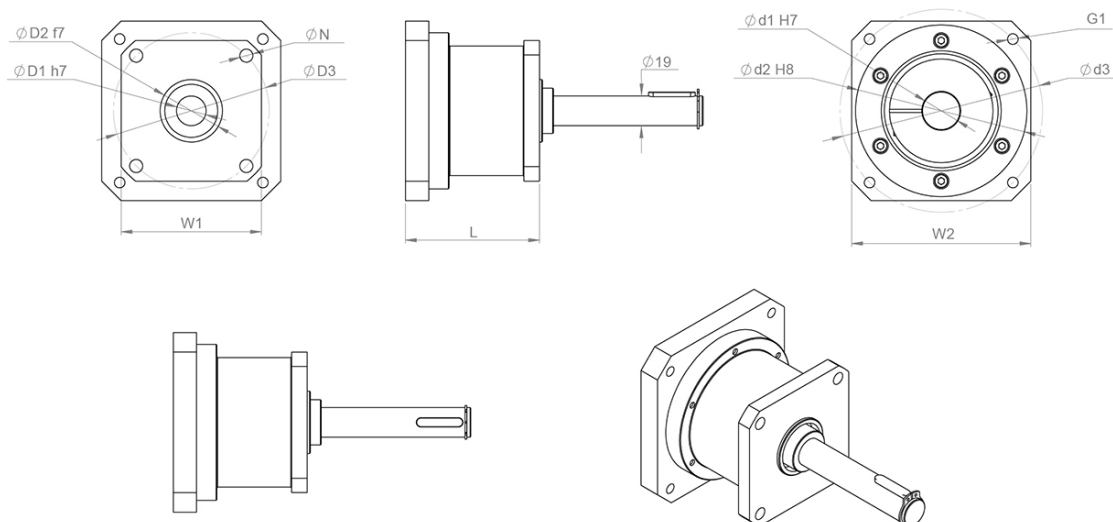
| Designation | Ratio  | Size |
|-------------|--|------|
| NPSK015     | 3 / 4 / 5 / 7 / 8 / 10 / 12 / 15 / 16 / 20 / 25 / 28 / 30 / 32 /<br>35 / 40 / 50 / 64 / 70 / 100     | 015  |
| NPSK025     | 3 / 4 / 5 / 7 / 8 / 9 / 10 / 12 / 15 / 16 / 20 / 25 / 28 / 30 / 32<br>/ 35 / 40 / 50 / 64 / 70 / 100 | 025  |
| NPSK035     | 3 / 4 / 5 / 7 / 8 / 9 / 10 / 12 / 15 / 16 / 20 / 25 / 28 / 30 / 32<br>/ 35 / 40 / 50 / 64 / 70 / 100 | 035  |
| NPSK045     | 5 / 8 / 10 / 25 / 32 / 50 / 64 / 100   | 045  |

## Adapter kit RHL

Easily connect your RHL Linear unit with a planetary gear by using our adapter-kit. Design your complete solution of RHL Linear unit + Adapter kit + Planetary gear with our CAD-Configurator.



## General Data

**RHL80**

**RHL110**


| Designation                          | Compatible with | D1 | D2  | D3  | G1 |
|--------------------------------------|-----------------|----|-----|-----|----|
| <b>RHL80-H16-CPS015 Adapter kit</b>  | RHL80           | 14 | 60  | 75  | M5 |
| <b>RHL110-H19-CPS035 Adapter kit</b> | RHL110          | 24 | 110 | 130 | M8 |

| Designation                          | N1  | L  | W1    | W2      |
|--------------------------------------|-----|----|-------|---------|
| <b>RHL80-H16-CPS015 Adapter kit</b>  | 6.4 | 62 | 60x60 | 70x70   |
| <b>RHL110-H19-CPS035 Adapter kit</b> | 8.4 | 86 | 90x90 | 115x115 |

