

Rail

SBTE: Standard zinc plated steel

SXTE: Stainless steel

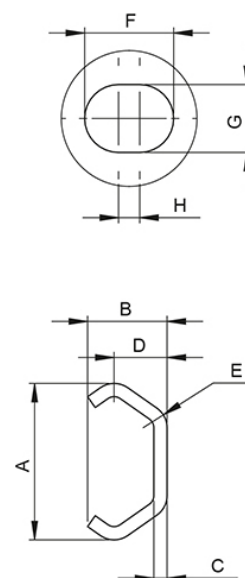
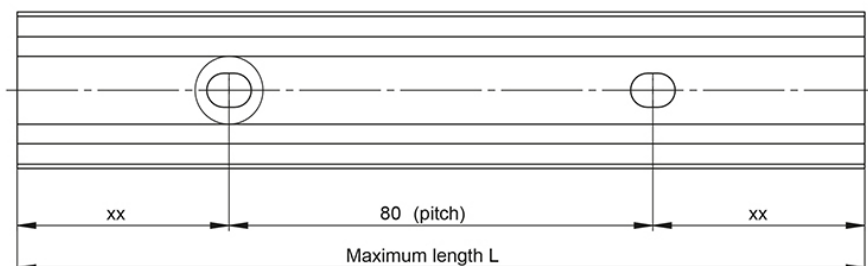
Special lengths are available upon request. Please contact Rollco for more information.



General Data

| Designation | Remark | Material | Weight (kg/m) |
|---------------|-------------------------|----------------------------|---------------|
| SXTE20 | Fixing screws C20-M4x8 | Stainless steel | 0.47 |
| SXTE30 | Fixing screws C30-M5x10 | Stainless steel | 0.90 |
| SBTE45 | Fixing screws C45-M8x16 | Standard zinc plated steel | 2.29 |
| SXTE45 | Fixing screws C45-M8x16 | Stainless steel | 2.29 |

Dimensions



| Designation | A | B | C | D | E | F | G | H | L |
|---------------|------|------|-----|------|-----|-----|-----|---|------|
| SXTE20 | 19.2 | 10 | 2 | 7 | 3 | 7 | 5 | 2 | 4000 |
| SXTE30 | 29.5 | 15 | 2.5 | 10 | 4.5 | 8.4 | 6.4 | 2 | 4000 |
| SBTE45 | 45.7 | 24.5 | 4 | 15.5 | 6 | 11 | 9 | 2 | 6080 |
| SXTE45 | 45.7 | 24.5 | 4 | 15.5 | 6 | 11 | 9 | 2 | 6080 |