

Table of contents

- **Wide Block Type LC**
- **Narrow Block Type SC**
- **Wide Block Type LL**
- **Narrow Block Type SL**
- **Rail RMG**
- **RA Grease**

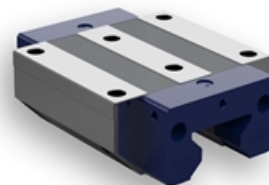
Wide Block Type LC

The Rollco Roller Guides are highly developed solutions for the high-tech industry.

The optimized shape of the rails, the roller guides with logarithmic profiles and the integrated lubrication system multiplies the economical as well as the technical advantages.

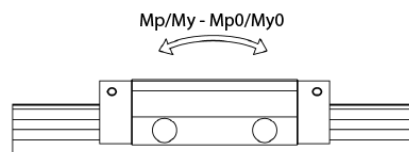
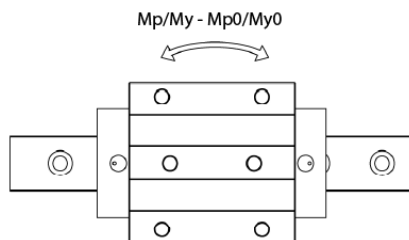
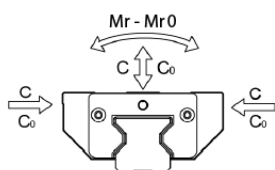
Dimensions in mm.

Lead times in the table below are only indications. Choice of preload and accuracy class will affect lead time. Please contact us for exact delivery time for your request.



General Data

LC

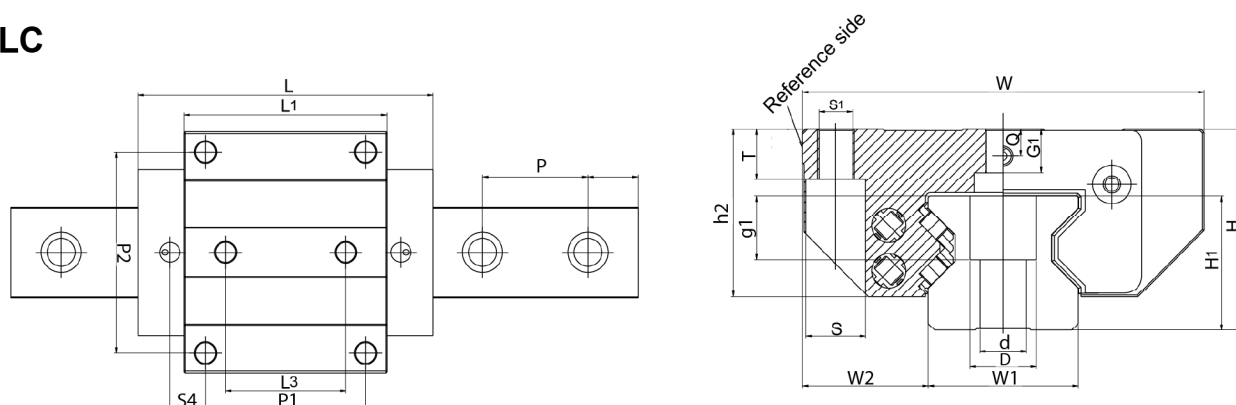


Designation	Dynamic Load Capacity C (N)	Static Load Capacity C0 (N)	Static Moment Mr0 (Nm)	Static Moment Mp0 (Nm)	Static Moment My0 (Nm)
RMG25LC	28700	57600	863	570	570
RMG35LC	53300	99000	2192	1235	1235
RMG45LC	95000	184000	5070	2979	2979
RMG55LC	132600	256000	8707	4981	4981
RMG65LC	212000	414000	15780	10140	10140

Designation	Dynamic Moment Mr (Nm)	Dynamic Moment Mp (Nm)	Dynamic Moment My (Nm)
RMG25LC	431	285	285
RMG35LC	1179	674	674
RMG45LC	2617	1538	1538
RMG55LC	4503	2576	2576
RMG65LC	8100	5210	5210

Dimensions

LC



Designation	L	H	W	L1	L3	H1	h2	W1	W2
RMG25LC	90.2	36	70	62	40	24.5	29.5	23	23.5
RMG35LC	119.3	48	100	80	52	32	41	34	33
RMG45LC	147.3	60	120	101.3	60	40	50	45	37.5
RMG55LC	173	70	140	120	70	48	57	53	43.5
RMG65LC	221.8	90	170	159.8	82	55	78	63	53.5

Designation	S1	S4	P	Q	S	T	D x d x g1	G1	Hole Pitch (P)	P1
RMG25LC	M8	14	-	5.5	M6	9	11 x 7 x 11.5	6.5	30	45
RMG35LC	M10	15.5	40	7.9	M8	12	15 x 9 x 17	10	-	62
RMG45LC	M12	17.6	52.5	8	M10	15	20 x 14 x 19	12	-	80
RMG55LC	M14	21.5	60	9	M12	18	24 x 16 x 22	13.5	-	95
RMG65LC	M16	29	75	15	M14	22	26 x 18 x 26	19.5	-	110

Designation	P2
RMG25LC	57
RMG35LC	82
RMG45LC	100
RMG55LC	116
RMG65LC	142

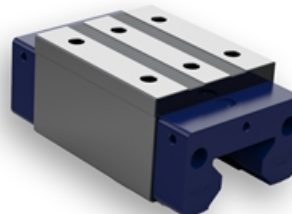
Narrow Block Type SC

The Rollco Roller Guides are highly developed solutions for the high-tech industry.

The optimized shape of the rails, the roller guides with logarithmic profiles and the integrated lubrication system multiplies the economical as well as the technical advantages.

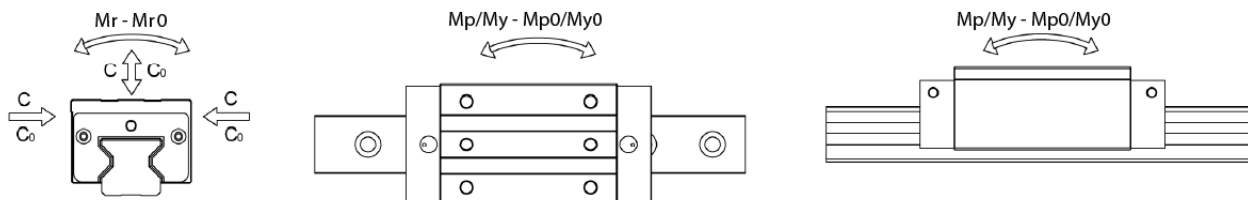
Dimensions in mm.

Lead times in the table below are only indications. Choice of preload and accuracy class will affect lead time. Please contact us for exact delivery time for your request.



General Data

SC

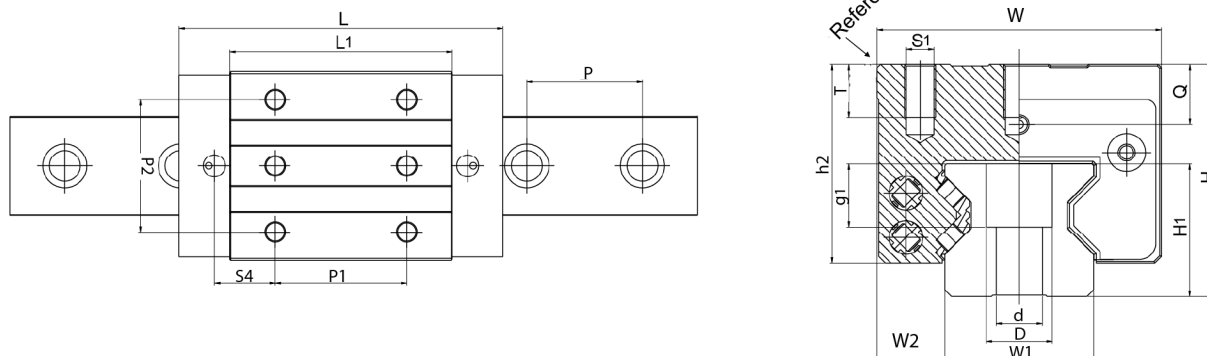


Designation	Dynamic Load Capacity C (N)	Static Load Capacity C0 (N)	Static Moment Mr0 (Nm)	Static Moment Mp0 (Nm)	Static Moment My0 (Nm)
RMG25SC	28700	57600	863	570	570
RMG35SC	53300	99000	2192	1235	1235
RMG45SC	95000	184000	5070	2979	2979
RMG55SC	132600	256000	8707	4981	4981
RMG65SC	212000	414000	15780	10140	10140

Designation	Dynamic Moment Mr (Nm)	Dynamic Moment Mp (Nm)	Dynamic Moment My (Nm)
RMG25SC	431	285	285
RMG35SC	1179	674	674
RMG45SC	2617	1538	1538
RMG55SC	4503	2576	2576
RMG65SC	8100	5210	5210

Dimensions

SC



Designation	L	H	W	L1	H1	h2	W1	W2	S1
RMG25SC	90.2	40	48	62	24.5	33.5	23	12.5	M6
RMG35SC	119.3	55	70	80	32	48	34	18	M8
RMG45SC	147.3	70	86	101.3	40	60	45	20.5	M10
RMG55SC	173	80	100	120	48	67	53	23.5	M12
RMG65SC	221.8	90	126	159.8	55	78	63	31.5	M16

Designation	S4	P	Q	T	D x d x g1	Hole Pitch (P)	P1	P2
RMG25SC	19	-	9.5	9	11 x 7 x 11.5	30	35	35
RMG35SC	21.5	40	14.9	12	15 x 9 x 17	-	50	50
RMG45SC	27.6	52.5	18	18	20 x 14 x 19	-	60	60
RMG55SC	31.5	60	19	19	24 x 16 x 22	-	75	75
RMG65SC	49	75	15	22	26 x 18 x 26	-	70	76

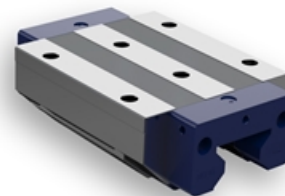
Wide Block Type LL

The Rollco Roller Guides are highly developed solutions for the high-tech industry.

The optimized shape of the rails, the roller guides with logarithmic profiles and the integrated lubrication system multiplies the economical as well as the technical advantages.

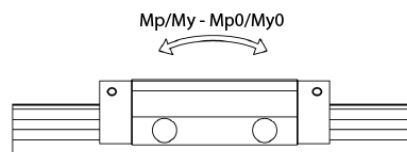
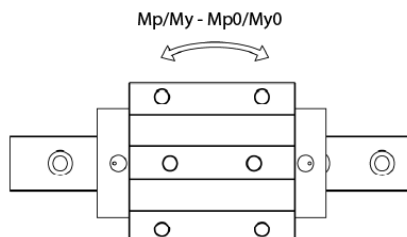
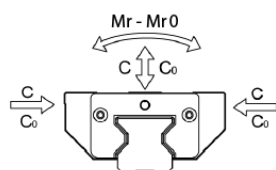
Dimensions in mm.

Lead times in the table below are only indications. Choice of preload and accuracy class will affect lead time. Please contact us for exact delivery time for your request.



General Data

LL

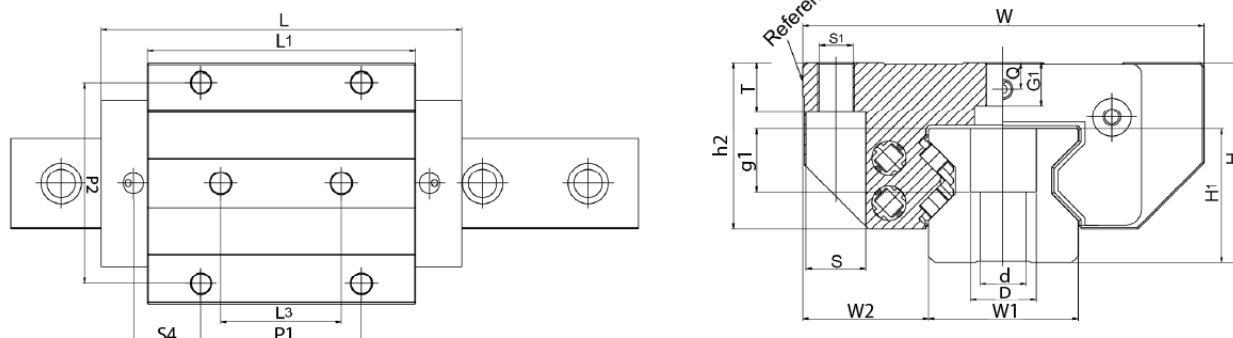


Designation	Dynamic Load Capacity C (N)	Static Load Capacity C0 (N)	Static Moment Mr0 (Nm)	Static Moment Mp0 (Nm)	Static Moment My0 (Nm)
RMG25LL	38900	76800	1150	970	970
RMG35LL	72600	136000	3014	2243	2243
RMG45LL	119500	242200	6672	4951	4951
RMG55LL	176000	351000	11915	8910	8910
RMG65LL	276000	579000	22100	11840	11840

Designation	Dynamic Moment Mr (Nm)	Dynamic Moment Mp (Nm)	Dynamic Moment My (Nm)
RMG25LL	583	491	491
RMG35LL	1595	1187	1187
RMG45LL	3293	2444	2444
RMG55LL	5977	4470	4470
RMG65LL	10530	8980	8980

Dimensions

LL



Designation	L	H	W	L1	L3	H1	h2	W1	W2
RMG25LL	109.7	36	70	81.5	40	24.5	29.5	23	23.5
RMG35LL	142.3	48	100	103	52	32	41	34	33
RMG45LL	179.8	60	120	133.8	60	40	50	45	37.5
RMG55LL	215	70	140	162	70	48	57	53	43.5
RMG65LL	272.3	90	170	210.3	82	55	78	63	53.5

Designation	S1	S4	P	Q	S	T	D x d x g1	G1	Hole Pitch (P)	P1
RMG25LL	M8	23.7	-	5.5	M6	9	11 x 7 x 11.5	6.5	30	45
RMG35LL	M10	27	40	7.9	M8	12	15 x 9 x 17	10	-	62
RMG45LL	M12	33.9	52.5	8	M10	15	20 x 14 x 19	12	-	80
RMG55LL	M14	42	60	9	M12	18	24 x 16 x 22	13.5	-	95
RMG65LL	M16	54.3	75	15	M14	22	26 x 18 x 26	19.5	-	110

Designation	P2
RMG25LL	57
RMG35LL	82
RMG45LL	100
RMG55LL	116
RMG65LL	142

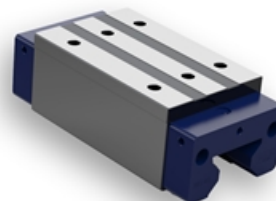
Narrow Block Type SL

The Rollco Roller Guides are highly developed solutions for the high-tech industry.

The optimized shape of the rails, the roller guides with logarithmic profiles and the integrated lubrication system multiplies the economical as well as the technical advantages.

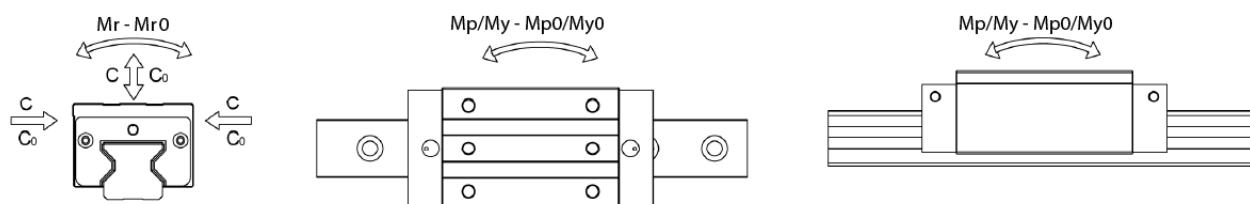
Dimensions in mm.

Lead times in the table below are only indications. Choice of preload and accuracy class will affect lead time. Please contact us for exact delivery time for your request.



General Data

SL

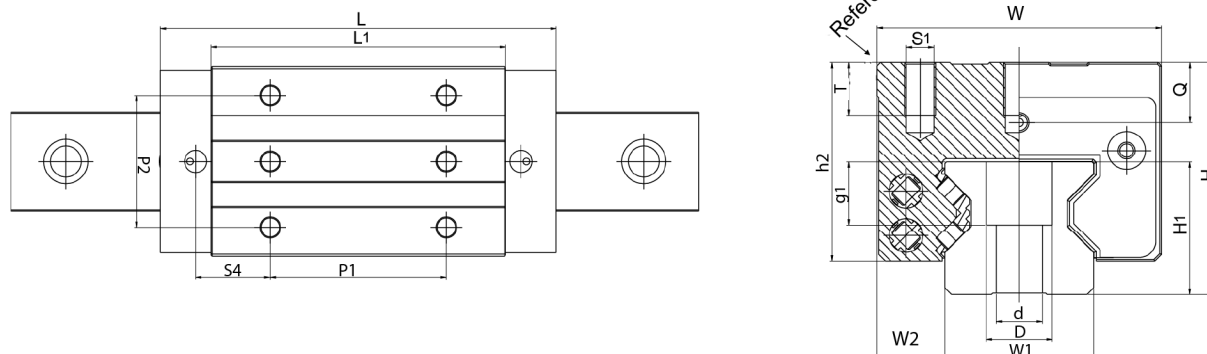


Designation	Dynamic Load Capacity C (N)	Static Load Capacity C0 (N)	Static Moment Mr0 (Nm)	Static Moment Mp0 (Nm)	Static Moment My0 (Nm)
RMG25SL	38900	76800	1150	970	970
RMG35SL	72600	136000	3014	2243	2243
RMG45SL	119500	242200	6672	4951	4951
RMG55SL	176000	351000	11915	8910	8910
RMG65SL	276000	579000	22100	11840	11840

Designation	Dynamic Moment Mr (Nm)	Dynamic Moment Mp (Nm)	Dynamic Moment My (Nm)
RMG25SL	583	491	491
RMG35SL	1595	1187	1187
RMG45SL	3293	2444	2444
RMG55SL	5977	4470	4470
RMG65SL	10530	8980	8980

Dimensions

SL



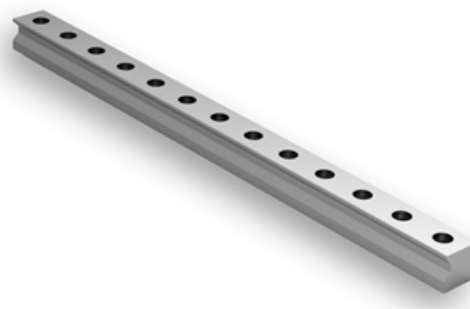
Designation	L	H	W	L1	H1	h2	W1	W2	S1
RMG25SL	109.7	40	48	81.5	24.5	33.5	23	12.5	M6
RMG35SL	142.3	55	70	103	32	48	34	18	M8
RMG45SL	179.8	70	86	133.8	40	60	45	20.5	M10
RMG55SL	215	80	100	162	48	67	53	23.5	M12
RMG65SL	272.3	90	126	210.3	55	78	63	31.5	M16

Designation	S4	P	Q	T	D x d x g1	Hole Pitch (P)	P1	P2
RMG25SL	21.2	-	9.5	9	11 x 7 x 11.5	30	50	35
RMG35SL	22	40	14.9	12	15 x 9 x 17	-	72	50
RMG45SL	33.9	52.5	18	18	20 x 14 x 19	-	80	60
RMG55SL	42	60	19	19	24 x 16 x 22	-	95	75
RMG65SL	49.2	75	15	22	26 x 18 x 26	-	120	76

Rail RMG

The Rollco Roller Guides are highly developed solutions for the high-tech industry. The optimized shape of the rails, the roller guides with logarithmic profiles and the integrated lubrication system multiplies the economical as well as the technical advantages.

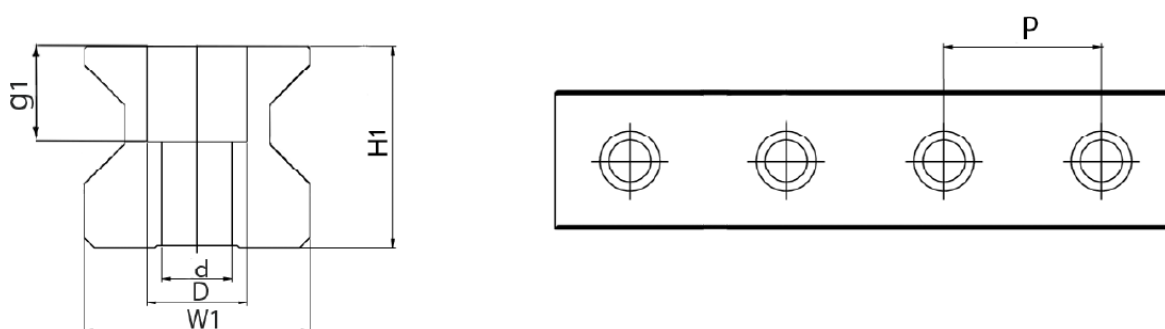
Dimensions in mm



General Data

Designation	Weight (kg/m)
RMG25	3.4
RMG35	6.5
RMG45	10.7
RMG55	15.2
RMG65	22.5

Dimensions



Designation	H1	W1	D x d x g1	Hole Pitch (P)
RMG25	24.5	23	11 x 7 x 11.5	30
RMG35	32	34	15 x 9 x 17	40
RMG45	40	45	20 x 14 x 19	52.5
RMG55	48	53	24 x 16 x 22	60
RMG65	55	63	26 x 18 x 26	75

RA Grease

NLGI grade 1.5

Clear grease based on synthetic oils and PTFE. Will fulfil all severe specifications from bearing manufacturers, industrial applications and vehicle producers. Very suitable for use where long service life is required and desired. The specific rheological properties of the lubricant will give very low good flow properties of the grease at extremely low temperatures, at the same time the high film strength and thickness will guarantee lubrication also at elevated temperatures. The type of PTFE used will adhere strongly to all surfaces lubricated and give a very low friction coefficient. The grease is water resistant, withstands oxidation, has very good mechanical stability, is completely non-toxic and provides a very wide application temperature range.

Temperature: -40 to +260 °C (application range)



General Data

Designation	Remark	Colour	Weight (g)
RA Grease NLGI 1.5	Cartridge package	Translucent white	400 g