

MKS Clamping Element

Pneumatic clamping element, designed to be used for holding a position when using linear rail guides. Energize to open (NC).

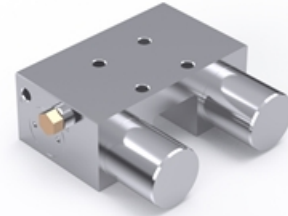
The holding forces may be increased by means of a PLUS connection, provided that this is listed under the technical data, by using the pneumatic pressure support of the spring accumulator.

More types are available, contact Rollco for further information.

Compatible with Linear Rail HRC/ARC/ERC only.

Dimensions in mm.

Temperature range (°C): 0 - 70

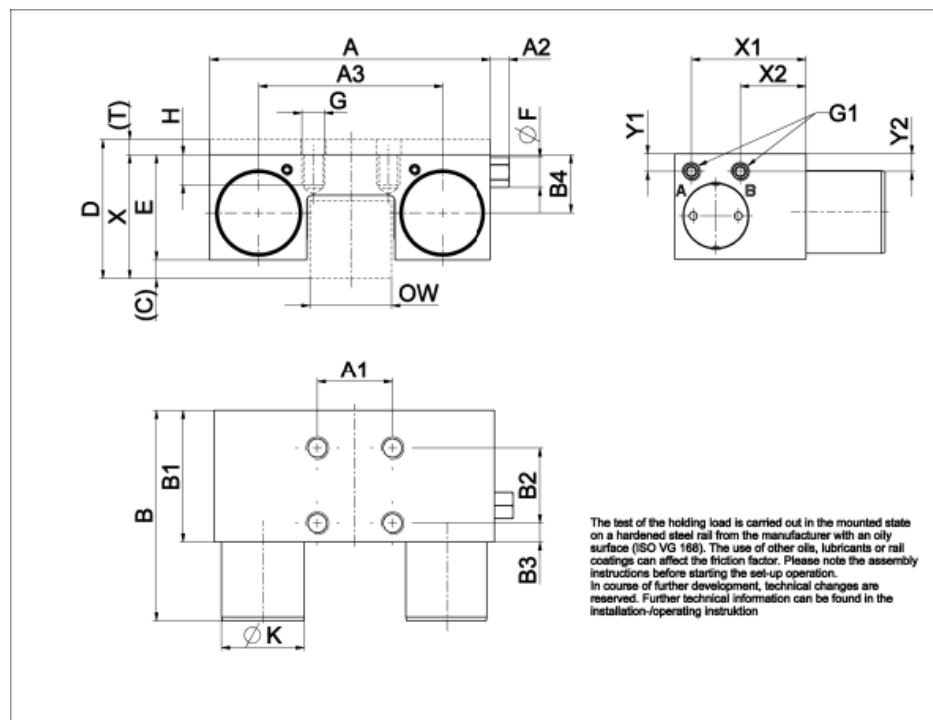


General Data

Designation	Compatible with	Fixing force (N)	Min. operating pressure (bar)	Max. Operating Pressure (bar)	Installation way
MKS1514D	HRC15, HRU15	400	5.5	6.5	from above
MKS2014D	HRC20, HRU20	400	5.5	6.5	from above
MKS2514D	HRC25, HRU25	750	5.5	6.5	from above
MKS3005A	HRC30, HRU30	1050	5.5	6.5	from above
MKS3514D	HRC35, HRU35	1250	5.5	6.5	from above
MKS4514D	HRC45, HRU45	1450	5.5	6.5	from above

Designation	PLUS-connection
MKS1514D	not possible
MKS2014D	not possible
MKS2514D	not possible
MKS3005A	not possible
MKS3514D	not possible
MKS4514D	not possible

Dimensions



Designation	OW	D	T	A	C	X	E	A1	A2
MKS1514D	13	24	0	55	2.5	24	21.5	15	5
MKS2014D	16.75	30	2	66	3.5	28	24.5	20	6
MKS2514D	19.75	36	0	75	8	36	28	20	5
MKS3005A	24.6	42	0	90	7	42	35	22	5
MKS3514D	31.8	48	0	100	11.5	48	36.5	24	5
MKS4514D	42	60	0	120	16.5	60	43.5	26	5

Designation	A3	B	B1	B2	B3	B4	G	H	F	G1 (air connection)
MKS1514D	34	58	39	15	15.5	12	M4	4.5	8	M5
MKS2014D	39	61	39	20	10	13.4	M5	4.2	8	M5
MKS2514D	49	56	35	20	5	15.5	M6	8	8	M5
MKS3005A	58	68	39	22	8.5	20.5	M8	7	8	M5
MKS3514D	68	67	39	24	7.5	20.5	M8	10	8	M5
MKS4514D	78.8	82	49	26	11.5	26.8	M10	15	8	M5

Designation	X1 (air filter horizontal / mm)	Y1 (air filter vertical / mm)	X2 (air connection horizontal / mm)	Y2 (air connection vertical / mm)	K
MKS1514D	34	17	34	5.9	16
MKS2014D	35	21	34	5.2	20
MKS2514D	30.5	4.7	17.5	4.7	22
MKS3005A	24.5	5.2	14.5	5.2	25
MKS3514D	20	5.2	9	5.2	28
MKS4514D	29.5	11	19.5	11	30