

ARC MS

Slim, super short block with and without ball chain.

For high load applications or any application where severe chock-loads may occur, the standard version offers better safety margins by its higher static limit (C0). For light to medium loads where a very long lifetime is required, the ball-cage will show superior life span and reliability.

Please note that ball chain versions must never be used for linear speeds exceeding 3 m/s!

Size 15 delivered with straight standard nipple.

Size 20 – 30 delivered with angled standard nipple.

Lubrications injections ports on the block:

N1: Front of the block. All blocks are delivered with front mounted standard grease nipple.

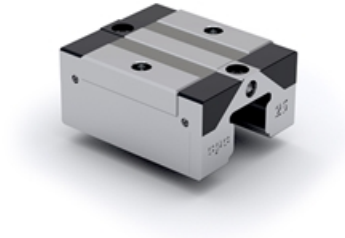
N2: Side of the block. The side lubrication injection port is sealed on delivery to prevent leakage of lubrication.

N3: Top of the block with an O-ring seal. The top lubrication injection port is sealed on delivery to prevent leakage of lubrication.

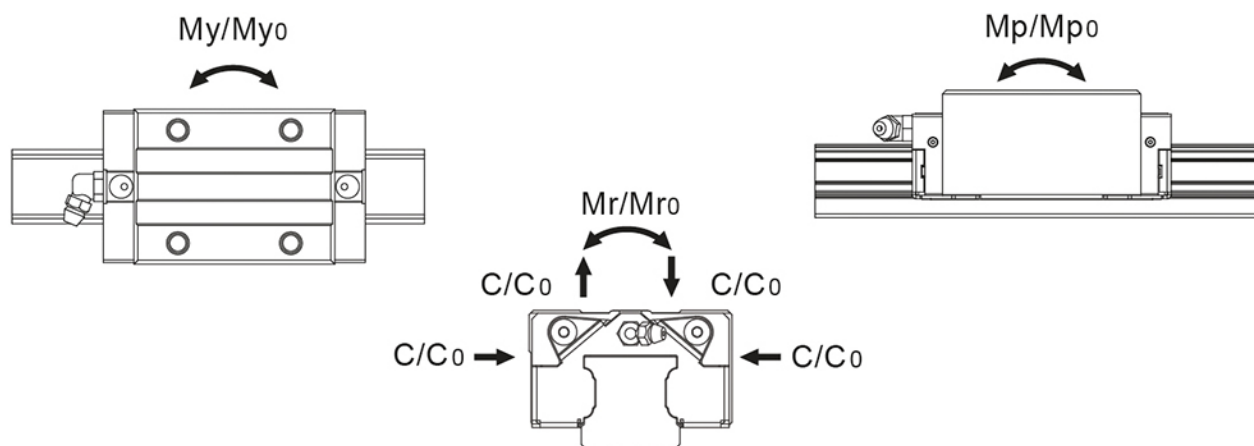
Dimensions in mm.

Lead times in the table below are only indications. Choice of preload, accuracy class and other options will affect lead time. Please contact us for exact delivery time for your request.

For more information about calculation of life, load rating and static moment see Technical information.



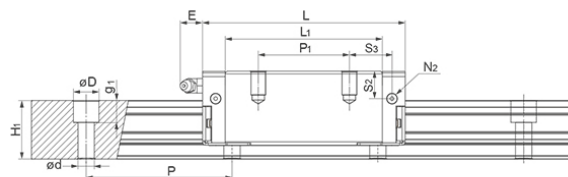
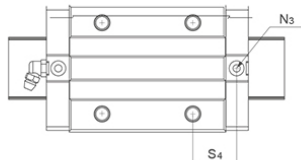
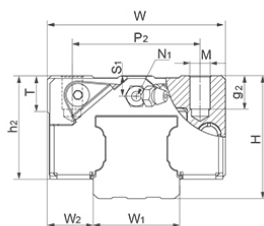
General Data



Designation	Dynamic Load Capacity C (N)	Static Load Capacity C ₀ (N)	Static Moment Mp ₀ (Nm)	Static Moment Mr ₀ (Nm)	Static Moment My ₀ (Nm)
ARC15MS	7700	12100	50	100	50
ARC20MS	12500	19300	100	205	100
ARC25MS	18200	27300	160	350	160
ARC30MS	23300	33100	230	520	230

Designation	Dynamic Moment Mr (Nm)	Dynamic Moment Mp (Nm)	Dynamic Moment My (Nm)	Weight Block (g)
ARC15MS	64	32	32	106
ARC20MS	133	65	65	170
ARC25MS	233	107	107	300
ARC30MS	366	162	162	560

Dimensions



**E: Size 15 delivered with straight standard nipple.
Size 20 – 55 delivered with angled standard nipple.

Designation	L	H	W	L1	H1	h2	W1	W2	S1
ARC15MS	41.2	24	34	26	15	20.7	15	9.5	4.5
ARC20MS	49.2	28	42	32.2	20	23	20	11	4
ARC25MS	57.4	33	48	38.4	23	27	23	12.5	5
ARC30MS	68	42	60	44	27	35.2	28	16	7.5

Designation	S2	S3	S4	E	T	N1	N2	N3	M x g2	D x d x g1
ARC15MS	7.5	15.6	16.7	5.3	6	M3x6.5	M3x6	P3	M4x7	7.5 x 4.5 x 5.3
ARC20MS	7.4	19.1	19.8	10	8	M3x7.5	M3x5.5	P4	M5x7	9.5 x 6 x 8.5
ARC25MS	9.3	22.2	23.2	12	8	M6x7.5	M3x6.5	P4	M6x9	11 x 7 x 9
ARC30MS	12	27	26.7	12	12	M6x8.5	M6x5	P5	M8x10	14 x 9 x 12

Designation	P2	Hole Pitch (P)
ARC15MS	26	60
ARC20MS	32	60
ARC25MS	35	60
ARC30MS	40	80