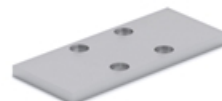


## Adapter Plate for RCS Clamping Element

Because of the height difference of different rail guide blocks and to ensure the proper function of the RCS Clamping Elements, the use of adapter plates is sometimes needed. See "Clamping Elements and Accessories" for individual block types and whether an adapter plate is needed.

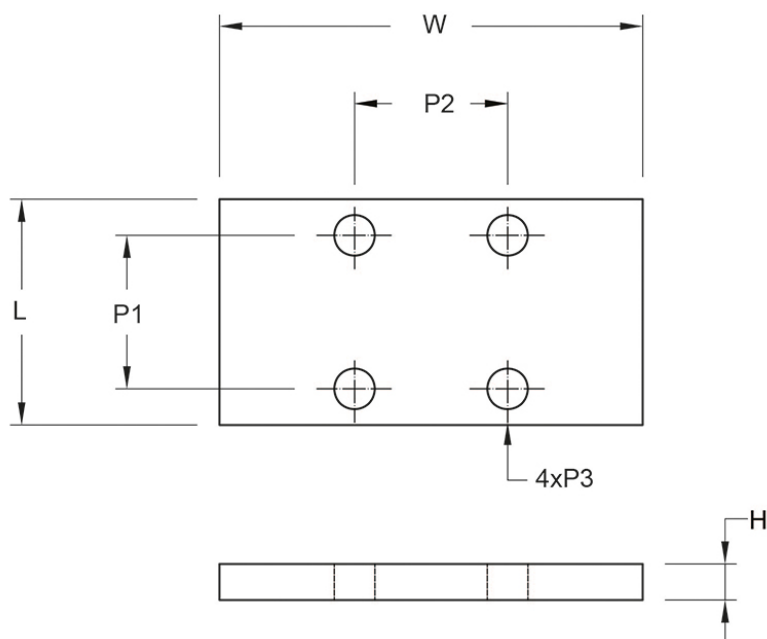
Dimensions in mm.



## General Data

Designation	Compatible with	Remark
<b>RCP15-4</b>	RCS15	Use Distance Plate RCP15-4 for SBI15SL
<b>RCP20-2</b>	RCS20	Use Distance Plate RCP20-2 for SBI20FL, SBI20SL, SBI20FLL, SBI20SLL
<b>RCP25-4</b>	RCS25	Use Distance Plate RCP25-4 for SBI25SL, SBI25SLL
<b>RCP30-3</b>	RCS30	Use Distance Plate RCP30-3 for SBI30SL, SBI30SLL
<b>RCP35-7</b>	RCS35	Use Distance Plate RCP35-7 for SBI35SL, SBI35SLL

## Dimensions



Designation	H	L	P1	P2	P3	W
RCP15-4	4	25	17	17	4.5	47
RCP20-2	2	24	15	15	5.5	60
RCP25-4	4	30	20	20	6.5	70
RCP30-3	3	39	22	22	6.5	90
RCP35-7	7	39	24	24	8.5	100