

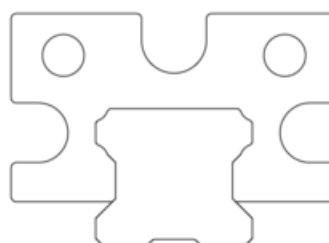
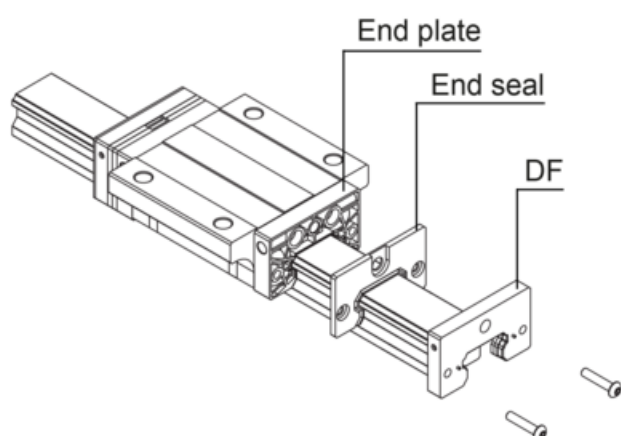
## DF Seal High Dust Proof

To protect the linear rail system from fine foreign matter, the high dust-proof DF seal can be used.

A high density felt in the DF unit contact the entire rail profile section, leaving no gaps for dust and debris to enter the block.

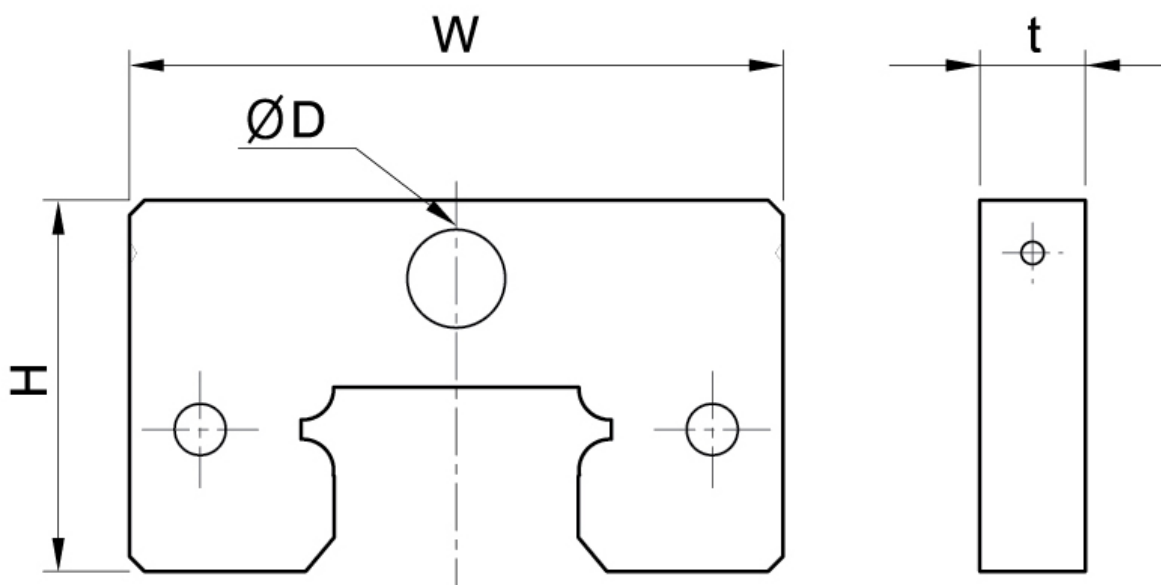
For DF to be the most effective, it is recommended to either combine it with bottom mounted rails SBI-B or using the option ST Stainless Dustproof Tape.

Dimensions in mm.



\* DF contact surfaces are tolerance match to the guiderail to ensure perfect sealing

## Dimensions



Designation	Block Type	W	t	H	D
<b>SBI15-DFA</b>	FL, FLL, HL, HLL, SL, SLL, FV, SV	33.4	7	20.2	4
<b>SBI20-DFA</b>	FL, FLL, SL, SLL	43.4	7	24.6	6.5
<b>SBI20-DFB</b>	CL, CLL, FV, SV	43.4	7	22.6	6.5
<b>SBI25-DFA</b>	FL, FLL, HL, HLL, SL, SLL	47	7	29.7	6.5
<b>SBI25-DFB</b>	CL, CLL, FV, SV	47	7	26.7	6.5
<b>SBI30-DFA</b>	FL, FLL, HL, HLL, SL, SLL	59	8	34.2	6.5
<b>SBI35-DFA</b>	FL, FLL, HL, HLL, SL, SLL	69	8	39.7	6.5
<b>SBI45-DFA</b>	FL, FLL, HL, HLL, SL, SLL	85	8	49.7	10.5
<b>SBI55-DFA</b>	FL, FLL, HL, HLL, SL, SLL	98	9	56	10.5
<b>SBI65-DFA</b>	FL, FLL, SL, SLL	123	9	69	10.5